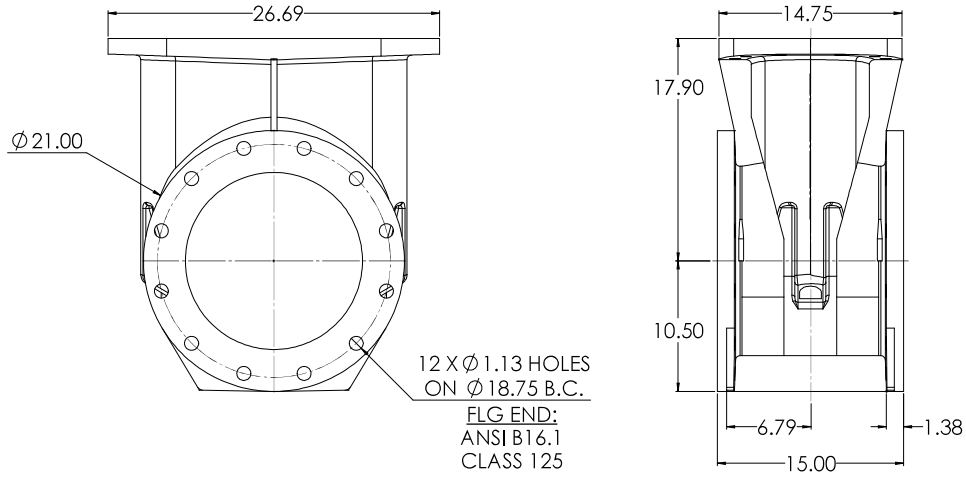
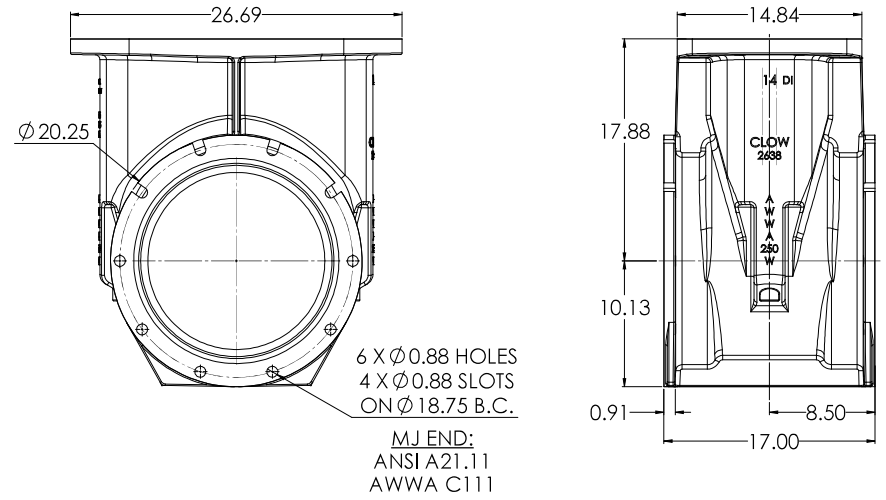


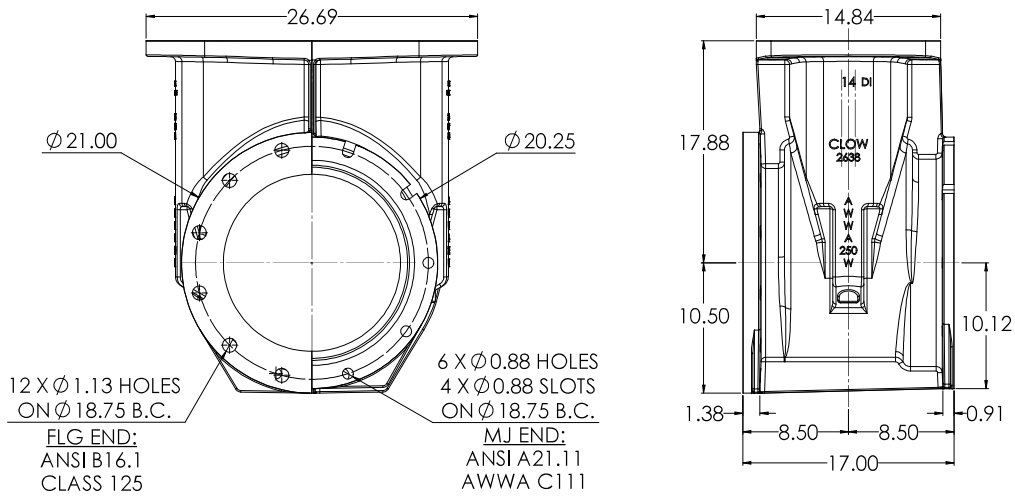
14" C515 FLG X FLG



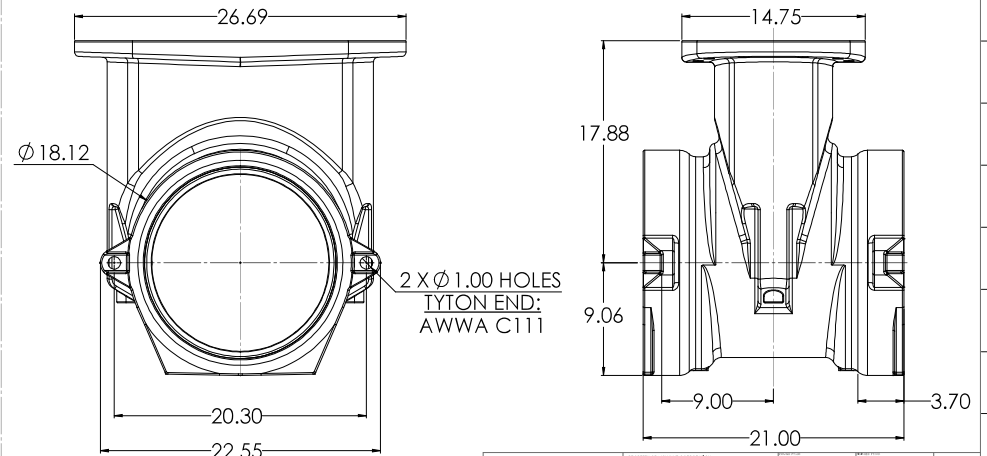
14" C515 MJ X MJ



14" C515 FLG X MJ

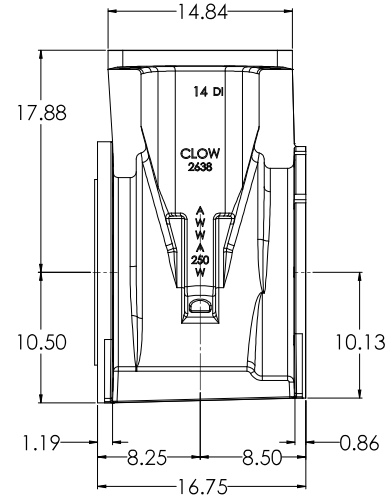
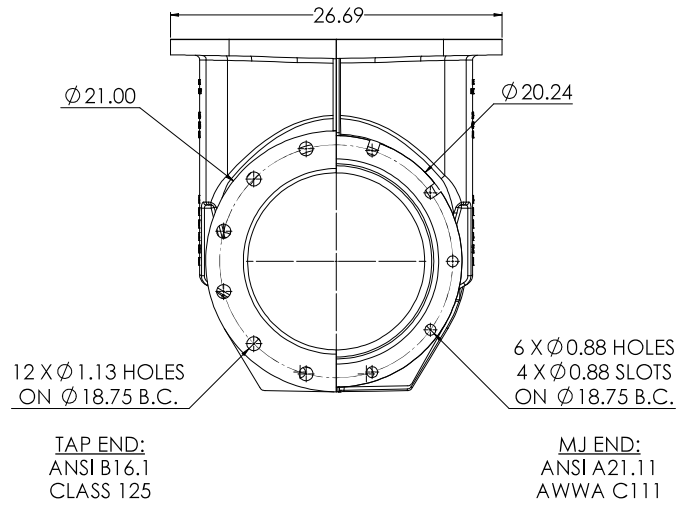


14" C515 TYTON X TYTON



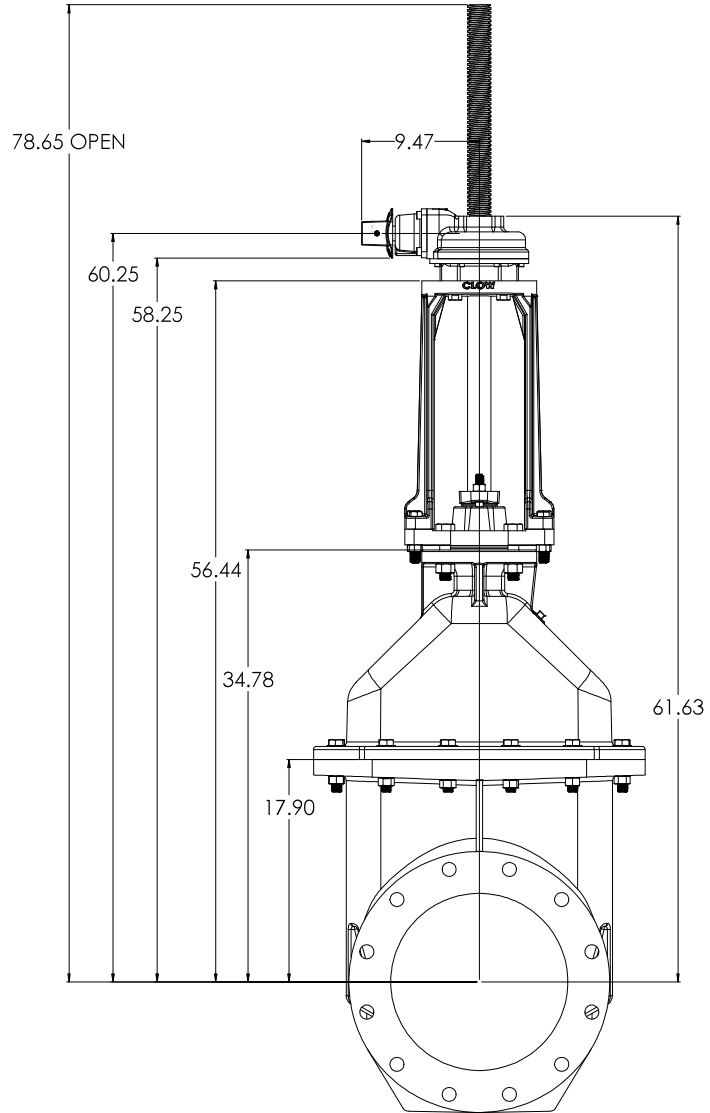
<p>CLW CLW CLW</p>		<p>14" C515 CS&Y GEARED RESILIENT LBS. WEDGE GATE VALVE</p>		<p>SCALE A</p>	<p>PROJECT NO. D</p>
<p>DATE 12/29/2009</p>	<p>DESIGNER CW</p>	<p>CHECKED 12/29/2009</p>	<p>SCALE 1:5</p>	<p>DATE 12/29/2009</p>	<p>PROJECT NO. 2016 SP2</p>

14" C515 MJ X TAP

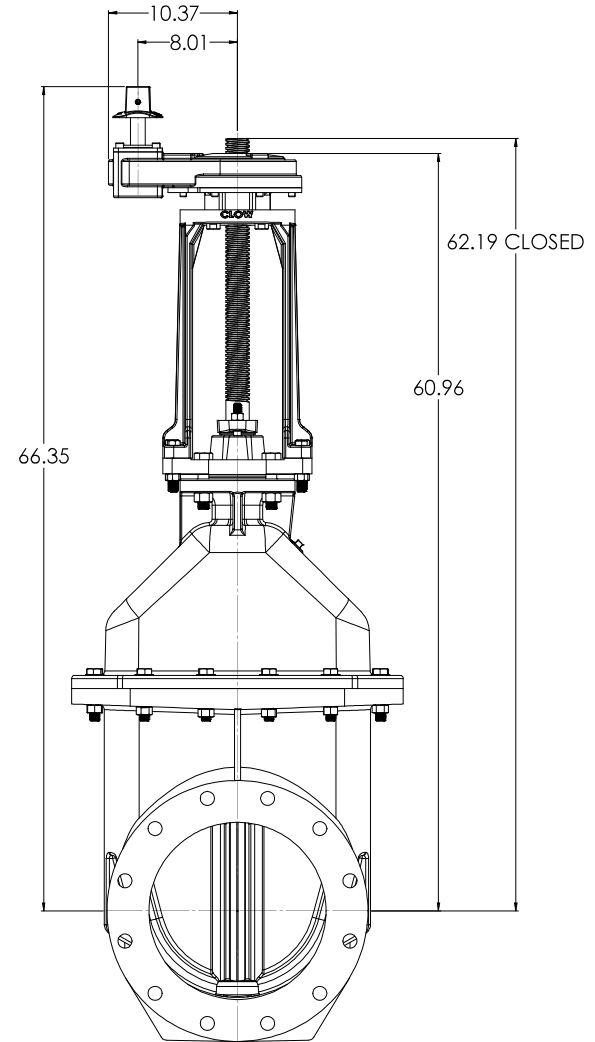


CLW CLW Valve Co. 1225 1/2 St. N.E. Atlanta, GA 30309 Phone: 404.525.1234 Fax: 404.525.1235 Email: sales@clwvalve.com		PROJECT: A DRAWING: 14" C515 CS&Y GEARED RESILIENT WEDGE GATE VALVE LBS. T:5 DATE: 12/23/2020		SHEET NO. 2 OF 8 D
--	--	--	--	--------------------------

BEVEL GEAR WITH OPERATING NUT

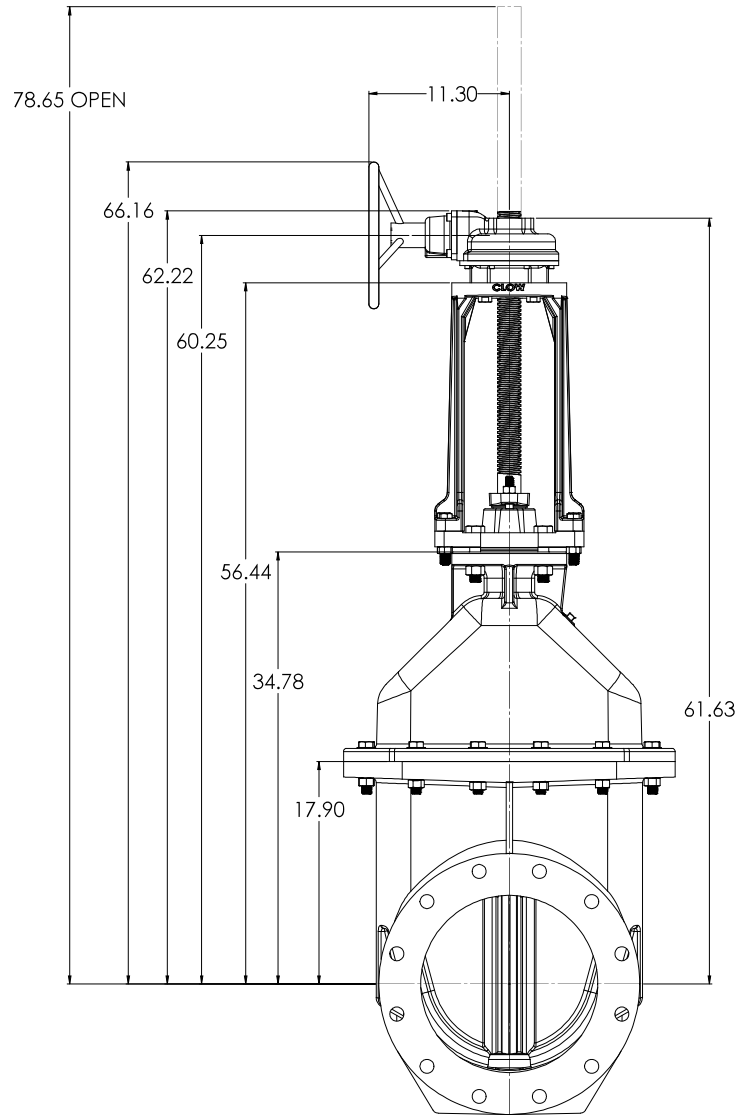


SPUR GEAR WITH OPERATING NUT

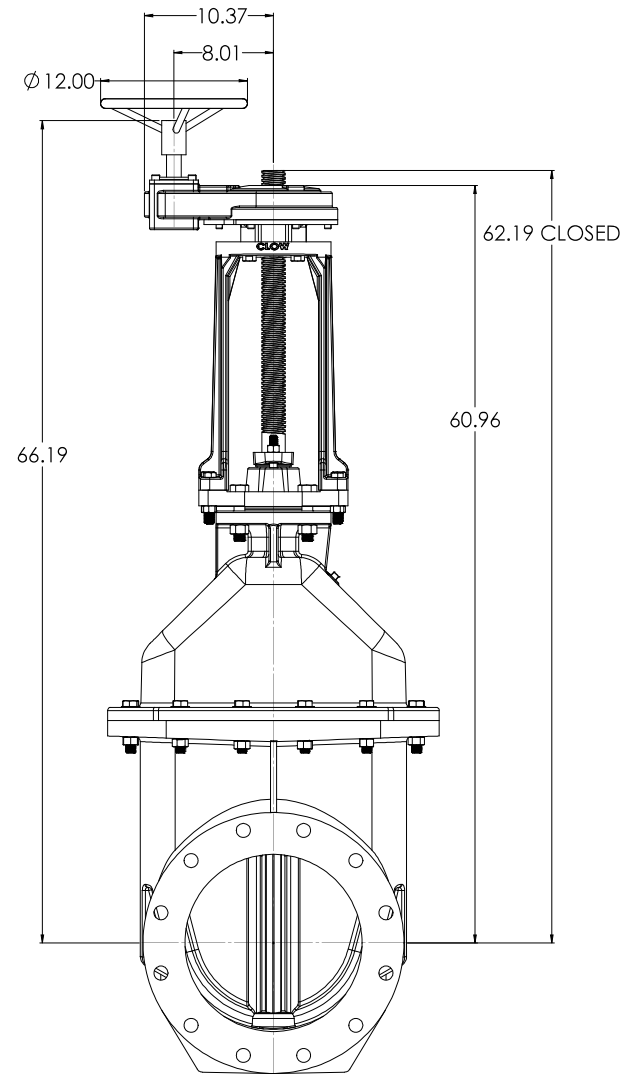


CLW CONSTRUCTION LIFTING WORKS		14" CS15 OS&Y GEARED RESILIENT WEDGE GATE VALVE		CLW CONSTRUCTION LIFTING WORKS
DATE: 12/29/2020 DWG NO: 21002 REV: 1 DESIGNED BY: JAC CHECKED BY: JAC	PROJECT NO: 21002 PROJECT NAME: 14" CS15 OS&Y GEARED RESILIENT WEDGE GATE VALVE SCALE: T:10 SHEET NO: 3 TOTAL SHEETS: 8	DRAWN BY: JAC DATE: 12/29/2020	PROJECT NO: 21002 PROJECT NAME: 14" CS15 OS&Y GEARED RESILIENT WEDGE GATE VALVE SCALE: T:10 SHEET NO: 3 TOTAL SHEETS: 8	PROJECT NO: 21002 PROJECT NAME: 14" CS15 OS&Y GEARED RESILIENT WEDGE GATE VALVE SCALE: T:10 SHEET NO: 3 TOTAL SHEETS: 8

BEVEL GEAR WITH HANDWHEEL

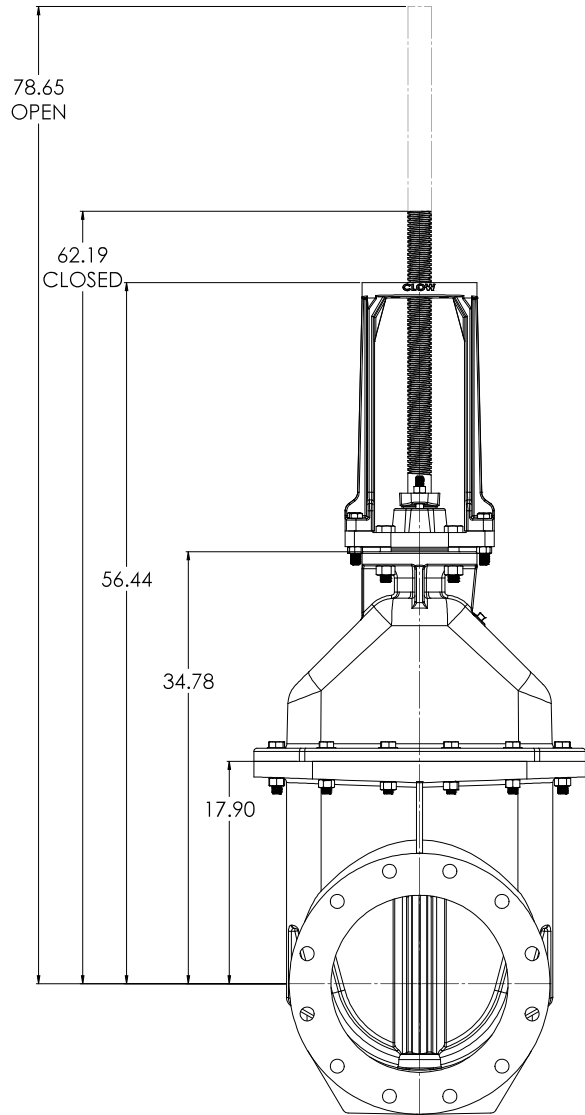


SPUR GEAR WITH HANDWHEEL



CLW CONSTRUCTION LUBRICATION WORKS		14" CS15 OS&Y GEARED RESILIENT WEDGE GATE VALVE		CLW CONSTRUCTION LUBRICATION WORKS
DATE: 12/20/2020 DWG NO: 21007 REV: 0 DESIGNED BY: JAC CHECKED BY: JAC	PROJECT NO: 21007 PROJECT NAME: 14" CS15 OS&Y GEARED RESILIENT WEDGE GATE VALVE SCALE: T:10 SHEET NO: 4 TOTAL SHEETS: 8	MATERIAL: LBS	WEIGHT: 100.00	DATE: 12/20/2020

BARE STEM



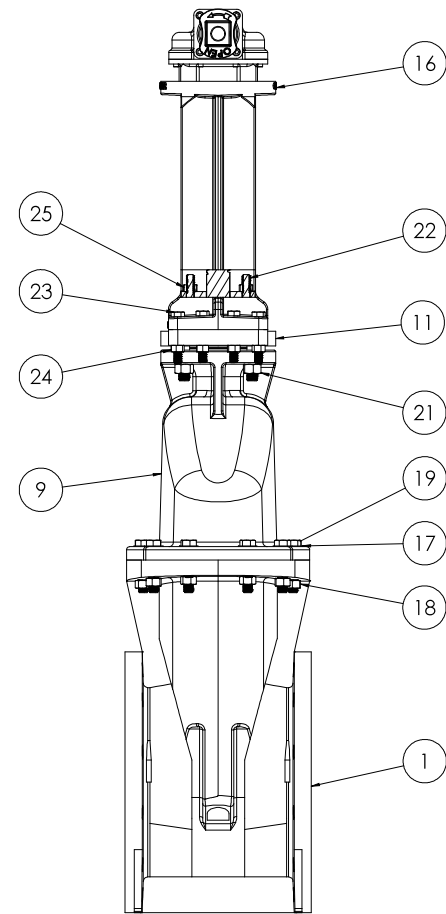
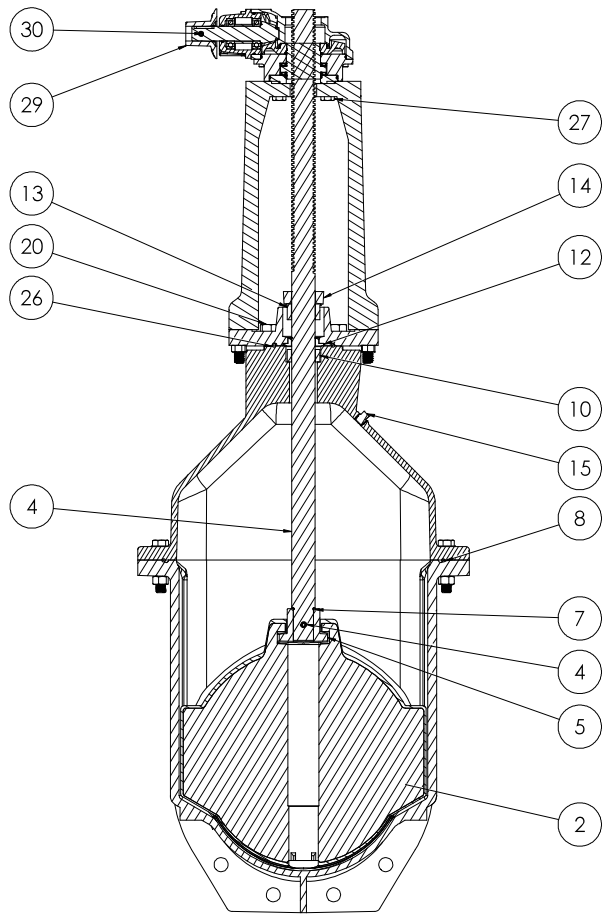
STANDARD FA14
MOUNTING

4 X $\varnothing 0.69$ HOLES
ON $\varnothing 5.50$ B.C.

$\varnothing 1.88$ STEM

BARE STEM MOUNTING FLG

CLW <small>CLW WORKS CO.</small>		<small>14" CS15 OS&Y GEARED RESILIENT WEDGE GATE VALVE</small>		<small>REVISED</small> A	CLW <small>CLW WORKS CO.</small>
<small>DATE</small> <small>BY</small> <small>CHECKED</small> <small>APPROVED</small>	<small>REVISED</small> <small>DATE</small> <small>BY</small> <small>REASON</small>	<small>PROJECT</small> LBS	<small>SCALE</small> T:10	<small>DATE</small> 12/2/2020	<small>REVISED</small> 8



CLW CLW Valve Co.		14" CS15 OS&Y GEARED RESILIENT WEDGE GATE VALVE		6 8	D
DATE: 12/23/2020 DWG NO: 122A/2020	PROJECT NO: 122A/2020 DRAWN BY: [Name] CHECKED BY: [Name]	SCALE: T:10 MATERIAL: CS15	WEIGHT: 138 LBS DIMENSIONS: 14" x 14" x 14"	PART NO: 122A/2020	REV: 1

<u>ITEM NO.</u>	<u>COMPONENT</u>	<u>QTY.</u>	<u>SIZE</u>	<u>STANDARD MATERIAL</u>	<u>MATERIAL OPTIONS</u>
1	BODY	1	-	DUCTILE IRON	-
3	WEDGE	1	-	EPDM/DUCTILE IRON	-
4	STEM	1	STEM	C87610	C65500 (LOW ZINC)
5	STEM NUT	1	-	C87850	C99500 (LOW ZINC)
6	PIN	1	1/2" X 3 1/4"	303 SS	-
7	O-RING	1	#325	EPDM	BUNA-N
8	O-RING	1	#463	EPDM	BUNA-N
9	COVER	1	-	DUCTILE IRON	-
10	OS&Y COVER SPACER	1	-	C87850	-
11	STUFFING BOX	1	-	DUCTILE IRON	-
12	BUSHING	1	-	C87850	-
13	GLAND	1	-	C87850	C83600 C65500 (LOW ZINC)
14	FOLLOWER PLATE	1	-	CAST IRON	-
15	PIPE PLUG	1	1/2" - NPT	18-8 SS	316 SS
16	YOKE	1	-	CAST IRON	-
17	WASHER	12	3/4"	18-8 SS	316 SS
18	HEX NUT	12	3/4"-10	18-8 SS	316 SS
19	HEX HEAD CAPSCREW	12	3/4"-10 X 3 3/4"	18-8 SS	316 SS
20	HEX HEAD CAPSCREW	4	7/8"-9 X 4"	18-8 SS	316 SS
21	HEX NUT	4	7/8"-9	18-8 SS	316 SS
22	STUD	2	5/8"-11 X 3 1/2"	18-8 SS	316 SS
23	HEX HEAD CAPSCREW	8	5/8"-11 X 3 3/4"	18-8 SS	316 SS
24	HEX NUT	8	5/8"-11	18-8 SS	316 SS
25	HEX NUT	2	5/8"-11	18-8 SS	316 SS
26	O-RING	1	#425	BUNA-N	EPDM
27	HEX HEAD CAPSCREW	4	5/8"-11 X 2"	18-8 SS	316 SS
28	BEVEL GEAR	1	-	-	SPUR GEAR
29	OPERATING NUT	1	-	CAST IRON	C86700, DUCTILE IRON ** Ø 12" HANDWHEEL **
30	COILED SPRING PIN	1	10MM X 45MM	302/304 SS	-

- VALVES CONFORM WITH THE FOLLOWING STANDARDS
 - AWWA C515
 - NSF 61
- LOW ZINC BRASS STEM AND STEM NUT AVAILABLE
- 100% DOMESTIC FASTENERS AND ORINGS OPTIONS AVAILABLE
- *OPEN LEFT* (COUNTERCLOCKWISE) AND *OPEN RIGHT* (CLOCKWISE) OPTIONS AVAILABLE
- TURNS TO OPEN FROM FULLY CLOSED: 104
 - ±5% WITH STANDARD 2:1 GEAR
- AWWA MAXIMUM ALLOWABLE CLOSING TORQUE 250 FT-LBS
- OPTIONAL HANDWHEEL CAN BE SUBSTITUTED FOR STANDARD 2" SQUARE OP. NUTS.
 - **NOTE: STANDARD HANDWHEEL SIZE LISTED OUT IN PARTS LIST.**

<small> COMPANY: CLOW VALVE CO. ADDRESS: 1400 W. 14TH ST., CLEVELAND, OH 44115 PHONE: (216) 781-2000 FAX: (216) 781-2001 WWW: WWW.CLOWVALVE.COM </small>	<small> PROJECT: 14" OS&Y GEARED RESIDENT WEDGE GATE VALVE LBS: T:10 DATE: 12/2/2020 DRAWN BY: CW </small>	<small> SHEET NO: 7 TOTAL SHEETS: 8 PROJECT NO: 2018 SPZ </small>	<small> CLOW VALVE CO. </small>
--	---	---	--