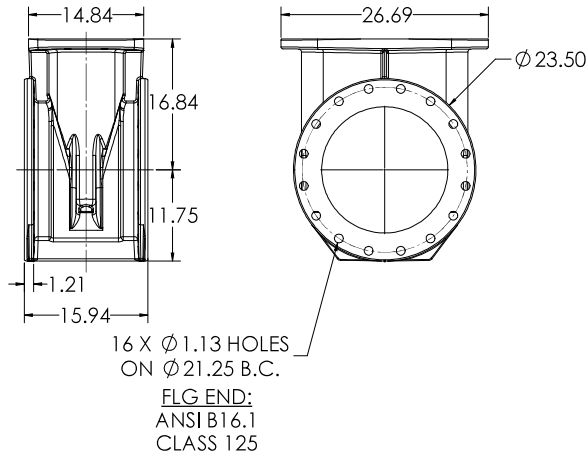
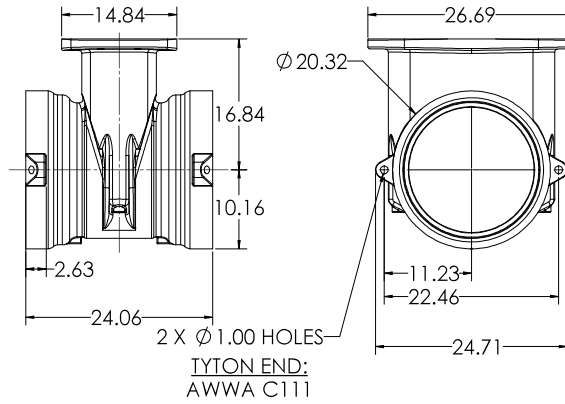


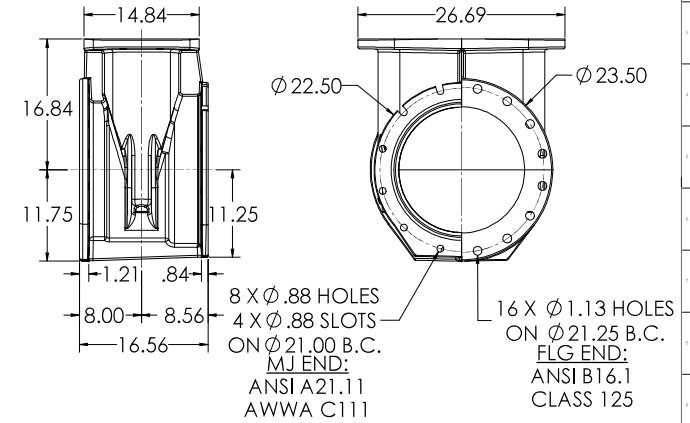
**16" C515 FLG X FLG**



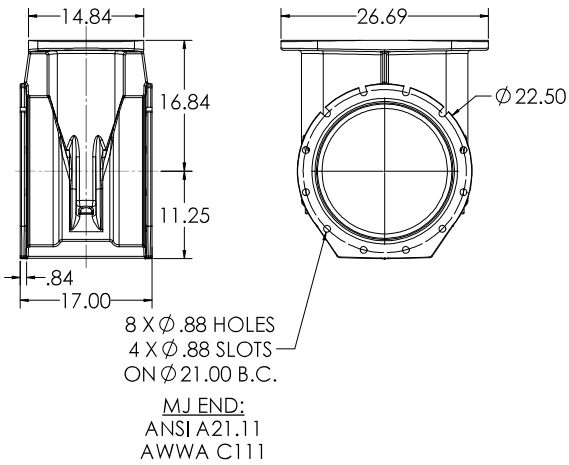
**16" C515 TYTON X TYTON**



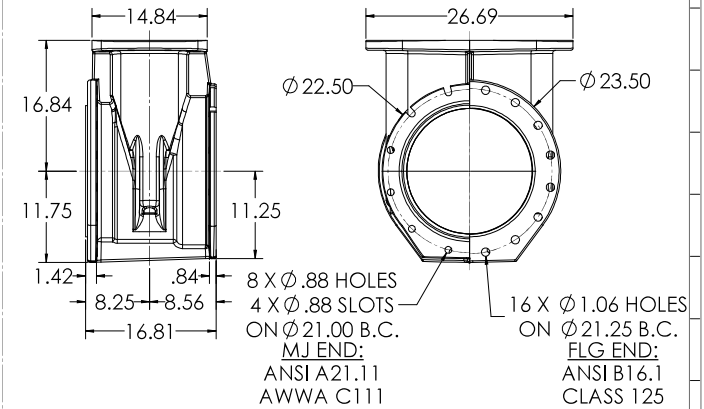
**16" C515 MJ X FLG**



**16" C515 MJ X MJ**

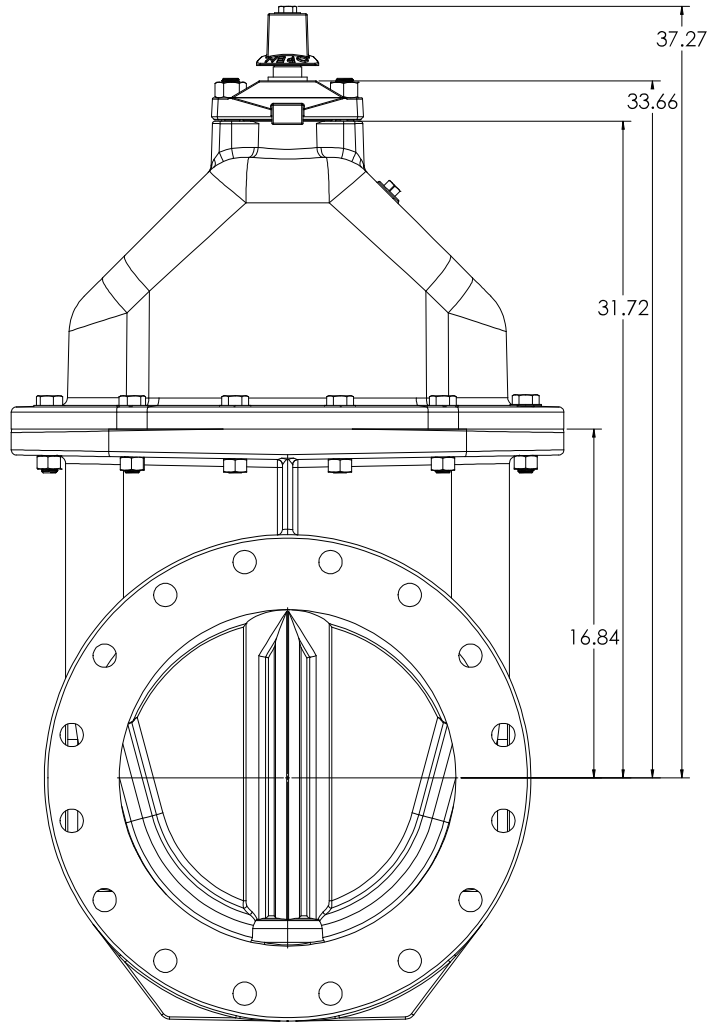


**16" C515 MJ X TAP**

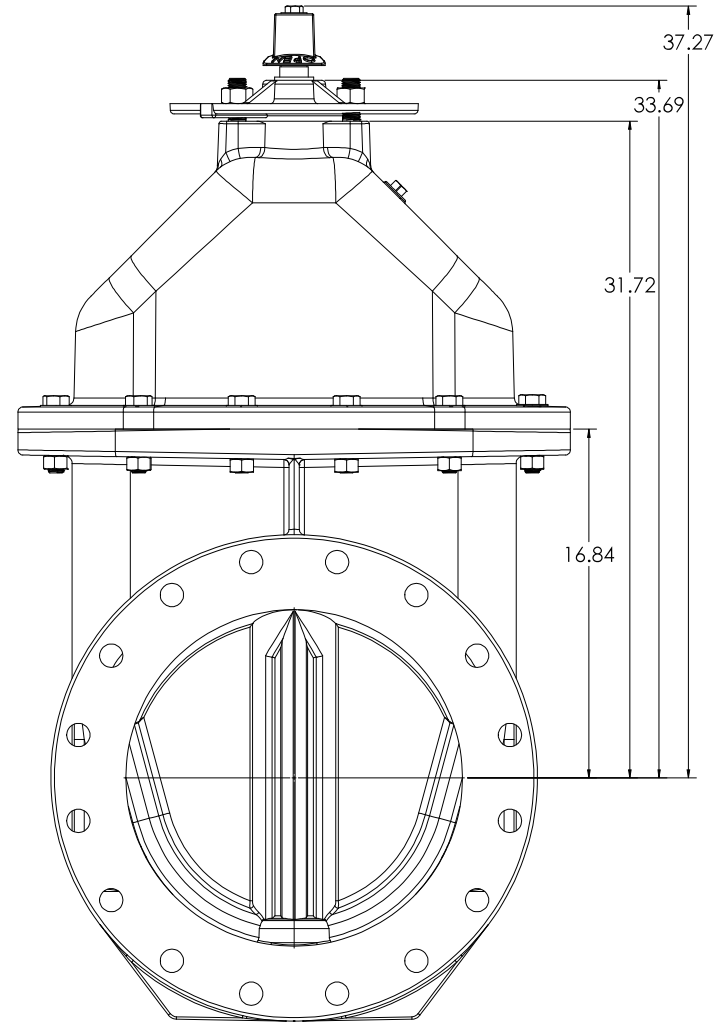


COMPANY: CLW ADDRESS: 1224/2020 CITY: CHICAGO, IL 60642 PHONE: 773.399.1234 FAX: 773.399.1235 WWW: www.clw.com		PRODUCT: 16" C515 NRS RESILIENT WEDGE GATE VALVE LBS. T8B DATE: 12/4/2020		DRAWN BY: D CHECKED BY:
---	--	---	--	----------------------------

**OPERATING NUT WITH  
O-RING PLATE**

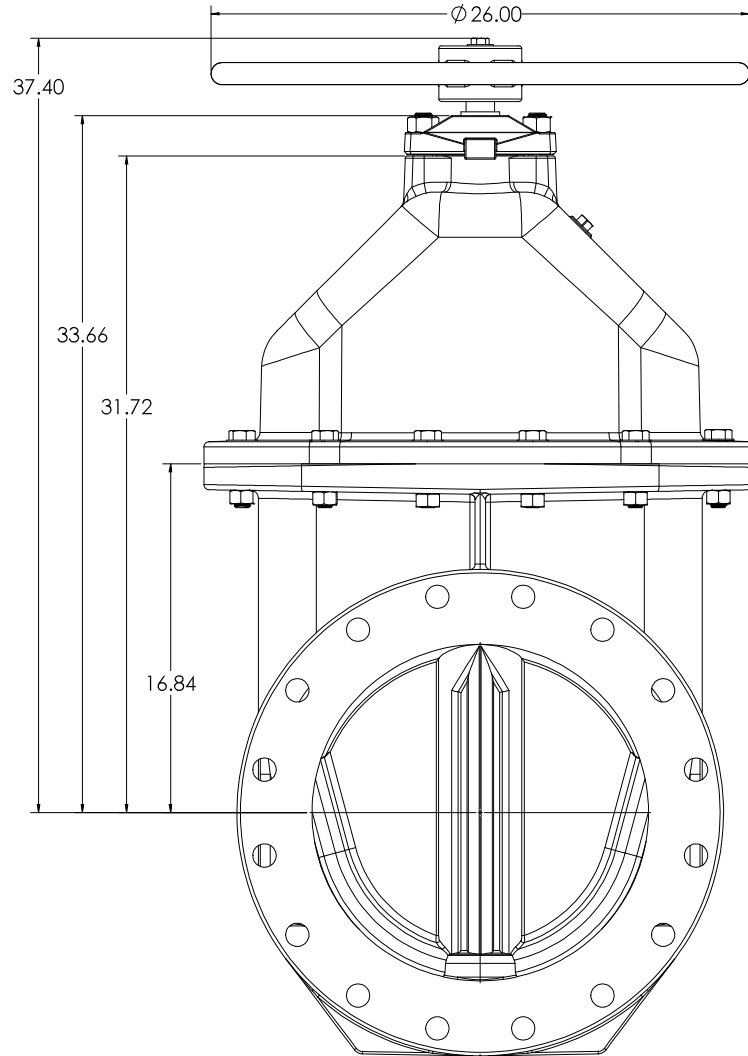


**OPERATING NUT WITH INDICATOR  
POST PLATE**

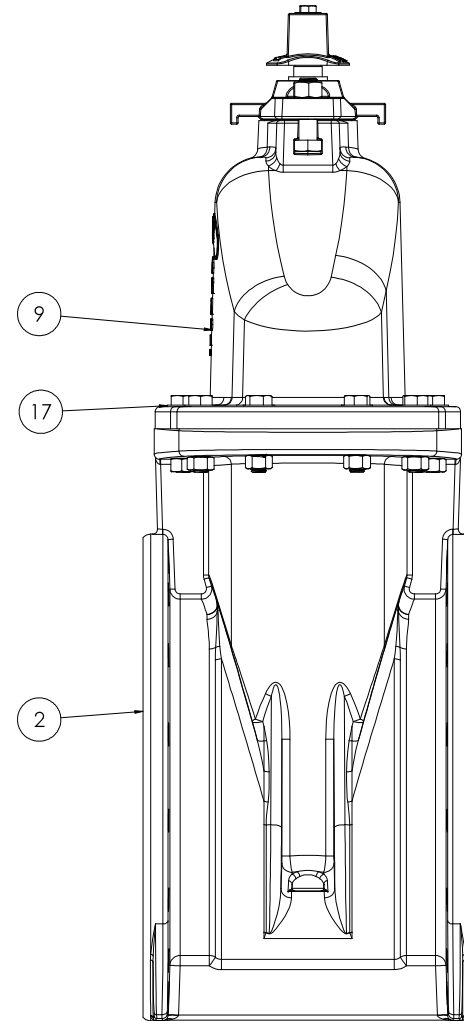
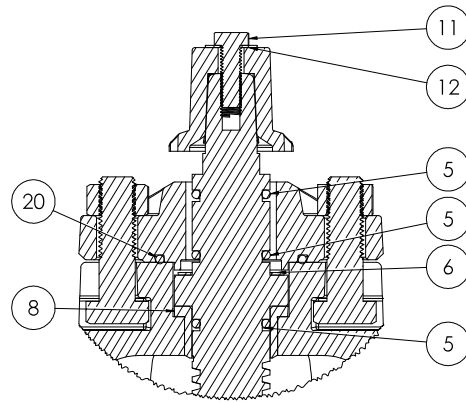
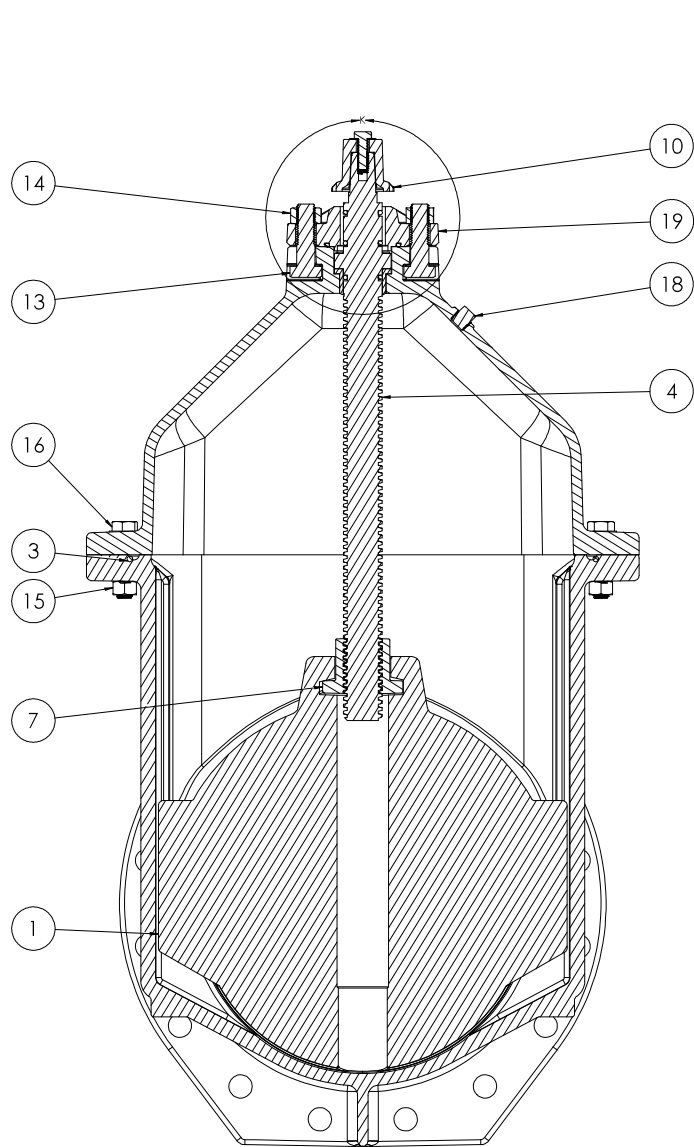


COMPANY: CLW ADDRESS: 12000 W. 12th Ave., Suite 100 DENVER, CO 80202 PHONE: 303.751.1111 FAX: 303.751.1112 WWW: www.clw.com		PROJECT: 16" CS18 NRS RESILIENT WEDGE GATE VALVE		SHEET: 2 TOTAL: 6	CLW 12/4/2009 T:3 2016 SP2 D
DATE: 12/4/09 BY: CW CHECKED: 12/4/09 APPROVED: 12/4/09	PART: 16" CS18 NRS RESILIENT WEDGE GATE VALVE	MATERIAL: 16" CS18 NRS RESILIENT WEDGE GATE VALVE	SCALE: 1:3	DRAWN BY: CW	CHECKED BY: 12/4/09

# HANDWHEEL WITH O-RING PLATE



COMPANY: <b>CLW</b> ADDRESS: 12247 122ND AVE, SUITE 100, BAYVIEW, ONTARIO, CANADA M2H 3P2 TEL: (416) 223-1111 FAX: (416) 223-1112 WWW: WWW.CLW.COM		PROJECT: <b>16" CS18 NRS RESILIENT WEDGE GATE VALVE</b> DRAWING NO: <b>LBS-GATE VALVE</b> SCALE: <b>1:3</b> DATE: <b>12/4/2020</b>		SHEET NO: <b>3</b> TOTAL SHEETS: <b>6</b> DRAWN BY: <b>D</b>
DATE: 12/4/2020 TIME: 10:00 AM DRAWN BY: D CHECKED BY: CW	PROJECT: 16" CS18 NRS RESILIENT WEDGE GATE VALVE DRAWING NO: LBS-GATE VALVE SCALE: 1:3 DATE: 12/4/2020	SHEET NO: 3 TOTAL SHEETS: 6 DRAWN BY: D	PROJECT: 16" CS18 NRS RESILIENT WEDGE GATE VALVE DRAWING NO: LBS-GATE VALVE SCALE: 1:3 DATE: 12/4/2020	SHEET NO: 3 TOTAL SHEETS: 6 DRAWN BY: D



COMPANY: CLW ADDRESS: 1224/2020 PHONE: 408-255-1234 FAX: 408-255-1234 E-MAIL: info@clw.com WEBSITE: www.clw.com		PROJECT: 16" CS18 NRS RESILIENT WEDGE GATE VALVE DRAWING NO.: 16" CS18 NRS RESILIENT WEDGE GATE VALVE DATE: 12/24/2020 SCALE: 1:3 SHEET NO.: 4 OF 6		PROJECT NO.: A DRAWING NO.: 16" CS18 NRS RESILIENT WEDGE GATE VALVE DATE: 12/24/2020 SCALE: 1:3 SHEET NO.: 4 OF 6	PROJECT NO.: A DRAWING NO.: 16" CS18 NRS RESILIENT WEDGE GATE VALVE DATE: 12/24/2020 SCALE: 1:3 SHEET NO.: 4 OF 6
--	--	---	--	---	---

<u>ITEM NO.</u>	<u>COMPONENT</u>	<u>QTY.</u>	<u>SIZE</u>	<u>STANDARD MATERIAL</u>	<u>MATERIAL OPTIONS</u>
1	WEDGE	1	-	EPDM/DUCTILE IRON	-
2	BODY	1	-	DUCTILE IRON	-
3	O-RING	1	#463	EPDM	BUNA-N
4	STEM	1	1 7/8"	C86200	C99500 (LOW ZINC), 304 SS, 316 SS
5	O-RING	3	#325	EPDM	BUNA-N
6	THRUST WASHER	1	-	NYLATRON	-
7	STEM NUT	1	-	C86700	C87850, C99500 (LOW ZINC) C87610 (LOW ZINC)
8	COVER BUSHING	1	-	C87850	-
9	COVER	1	-	DUCTILE IRON	-
10	OPERATING NUT	1	-	CAST IRON	DUCTILE IRON, C86700, 304 SS, 316 SS, **Ø26" HANDWHEEL**
11	HEX HEAD CAP SCREW	1	1/2"-13 X 1 1/2"	18-8 SS	316 SS
12	WASHER	1	1/2"	18-8 SS	316 SS
13	HEX HEAD CAP SCREW	2	7/8"-9 X 3"	18-8 SS	316 SS
14	HEX NUT	2	7/8"-9	18-8 SS	316 SS
15	HEX NUT	12	3/4"-10	18-8 SS	316 SS
16	HEX HEAD CAP SCREW	12	3/4"-10 X 3 1/4"	18-8 SS	316 SS
17	WASHER	12	3/4"	18-8 SS	316 SS
18	PIPE PLUG	1	1/2"-NPT	304 SS	316 SS
19	O-RING PLATE	1	-	DUCTILE IRON	-
20	O-RING	1	#339	EPDM	BUNA-N

- VALVES CONFORM WITH FOLLOWING STANDARDS
  - AWWA C515
  - NSF 61
- LOW ZINC BRASS STEM AND STEM NUT AVAILABLE
- 100% DOMESTIC FASTENER AND O-RING OPTIONS AVAILABLE
- OPEN LEFT (COUNTERCLOCKWISE) AND OPEN RIGHT (CLOCKWISE) OPTIONS AVAILABLE
- TURNS TO OPEN FROM FULLY CLOSED: 52 (+/- 5%)
- AWWA MAXIMUM ALLOWABLE CLOSING TORQUE 275 FT-LBS
- OPTIONAL HANDWHEEL CAN BE SUBSTITUTED FOR STANDARD 2" SQUARE OP NUTS
  - \*\*NOTE: STANDARD HANDWHEEL SIZE CALLED OUT IN PARTS LIST\*\*

<small>           COMPANY: CLW            ADDRESS: 1224 W. 12TH AVE.            CHICAGO, IL 60607            TEL: 773.399.2200            FAX: 773.399.2201            WWW.CLW.COM         </small>		<small>           PROJECT: 16" CS18 NRS WEDGE            GATE VALVE            LBS.         </small>		<small>           DRAWING NO.: A            SHEET NO.: 5            TOTAL SHEETS: 6         </small>
<small>           DATE: 12/24/2020            BY: CW         </small>	<small>           SCALE: 1:3         </small>	<small>           PROJECT NO.: 2018-SP2         </small>	<small>           DRAWING TITLE: GATE VALVE         </small>	<small>           SHEET NO.: 5            TOTAL SHEETS: 6         </small>