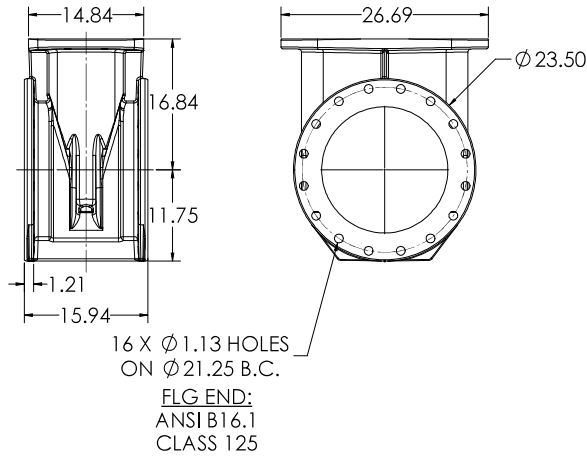
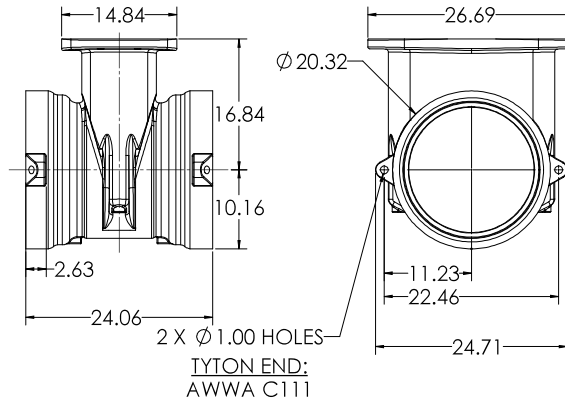


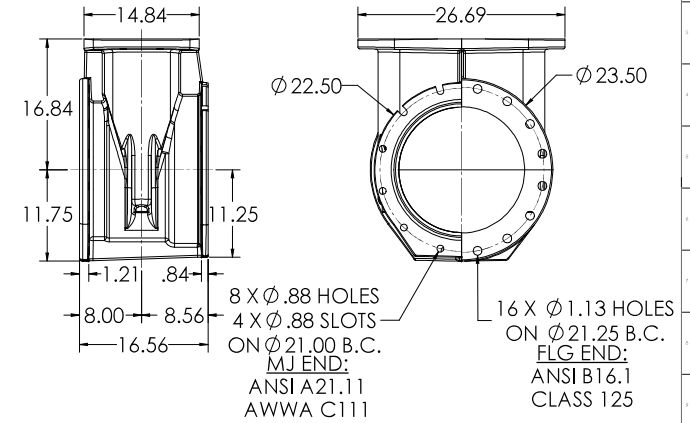
**16" C515 FLG X FLG**



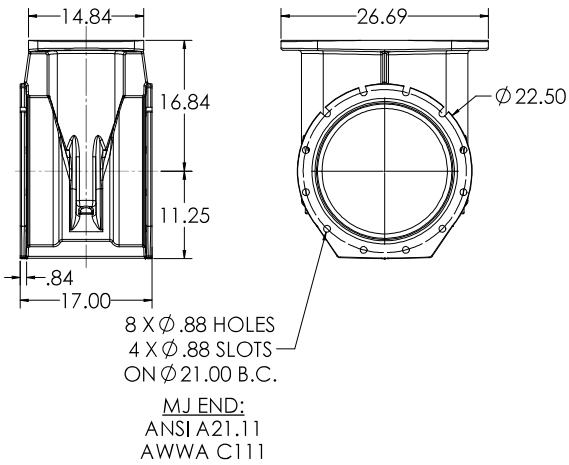
**16" C515 TYTON X TYTON**



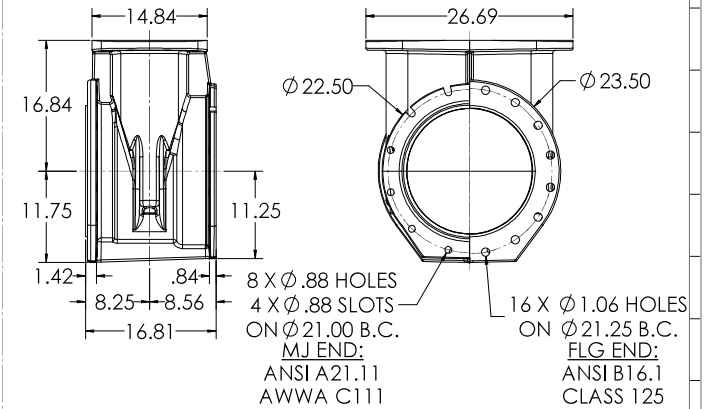
**16" C515 MJ X FLG**



**16" C515 MJ X MJ**

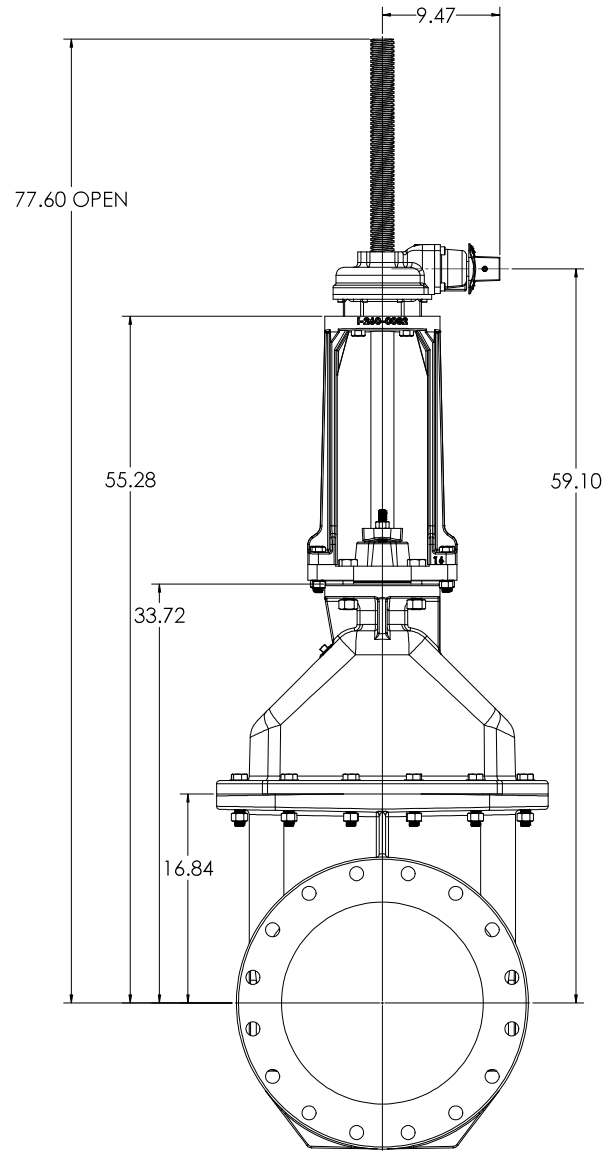


**16" C515 MJ X TAP**

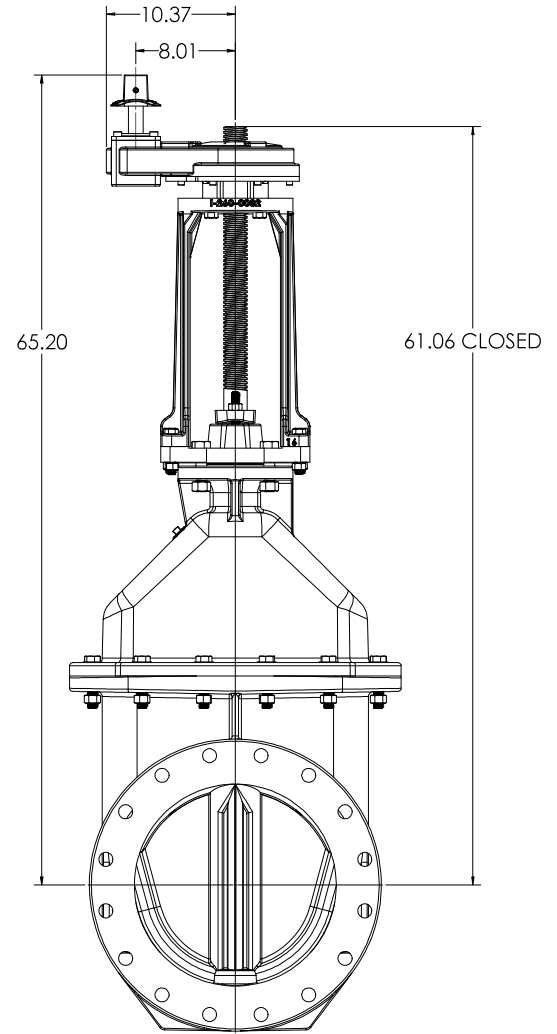


COMPANY: CLW ADDRESS: 1224 W. 12th St., Lincoln, NE 68502 PHONE: (402) 476-1111 FAX: (402) 476-1112 E-MAIL: sales@clw.com WEBSITE: www.clw.com		PROJECT: 16" C515 CS&Y GEARED RESILIENT WEDGE GATE VALVE LBS. T88 DATE: 12/4/2020 DRAWN BY: T88 CHECKED BY: T88 SCALE: 1:1		SHEET NO. 7 OF 7 PROJECT NO. D
---	--	---	--	--------------------------------------

**BEVEL GEAR WITH OPERATING NUT**

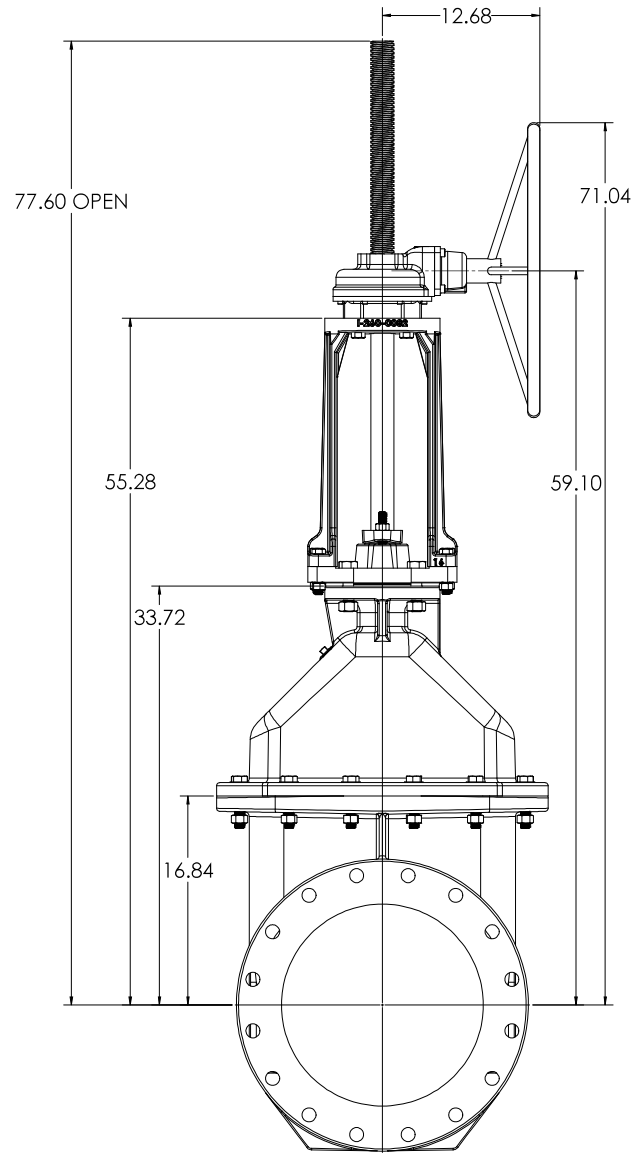


**SPUR GEAR WITH OPERATING NUT**

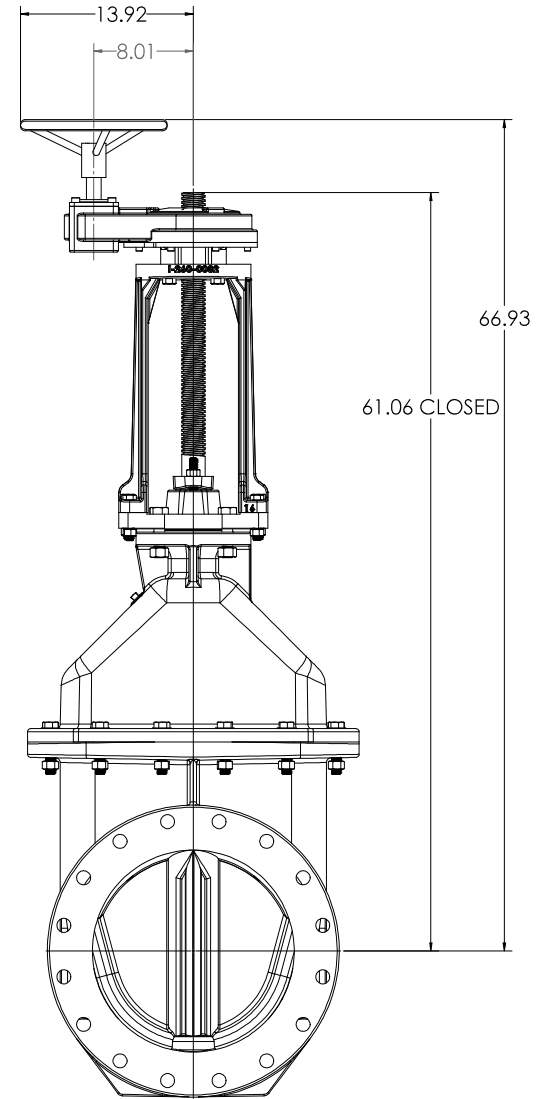


DESIGNED BY: [Blank]		CHECKED BY: [Blank]		DATE: [Blank]	
DRAWN BY: [Blank]		APPROVED BY: [Blank]		SCALE: [Blank]	
MATERIAL: [Blank]		QUANTITY: [Blank]		WEIGHT: [Blank]	
PART NO.: [Blank]		REV: [Blank]		PROJECT NO.: [Blank]	
MANUFACTURED BY: [Blank]		DRAWING NO.: [Blank]		SHEET NO.: [Blank]	
CW		12/4/2020		1:5	
16" CS15 OS&Y GEARED RESILIENT WEDGE GATE VALVE		LBS		2	
SOLEWORKS 2016 SP2		T:5		7	
CLW				D	

**BEVEL GEAR WITH HANDWHEEL**

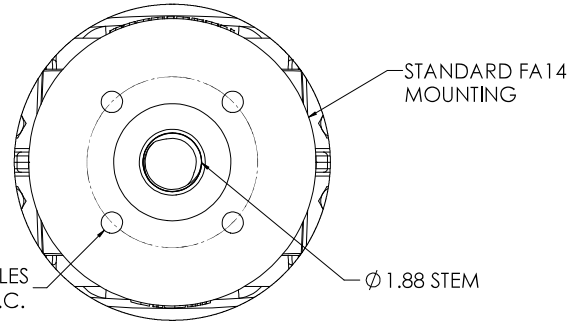
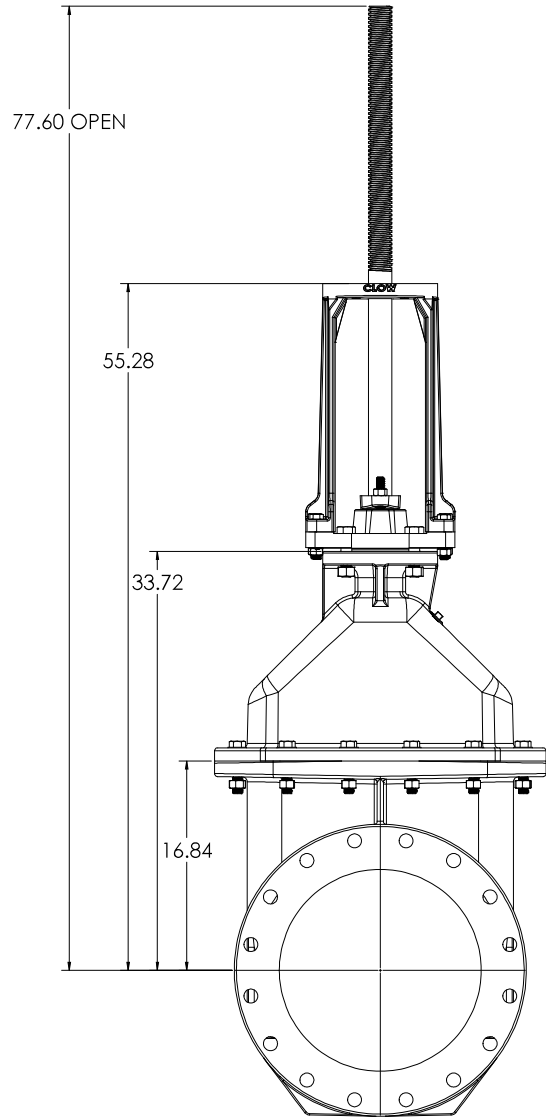


**SPUR GEAR WITH OPERATING NUT**

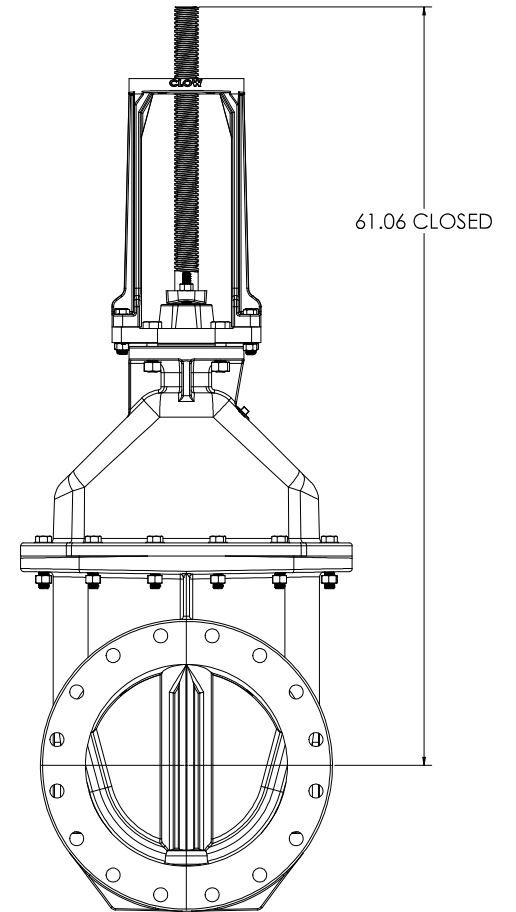


DESIGNED BY: [Blank] CHECKED BY: [Blank] DATE: [Blank] DRAWN BY: [Blank] SCALE: [Blank]	REVISED BY: [Blank] DATE: [Blank] REVISION: [Blank]	PROJECT NO.: [Blank] SHEET NO.: [Blank]	TITLE: 16" CS15 OS&Y GEARED RESILIENT WEDGE GATE VALVE LBS.	SCALE: 1:5 DATE: 12/4/2020 DRAWN BY: [Blank]	CHECKED BY: [Blank]	APPROVED BY: [Blank]	PROJECT: [Blank]	SHEET: 3 TOTAL: 7	CLW 12/15/20
---	---	--	--	--	---------------------	----------------------	------------------	----------------------	-----------------

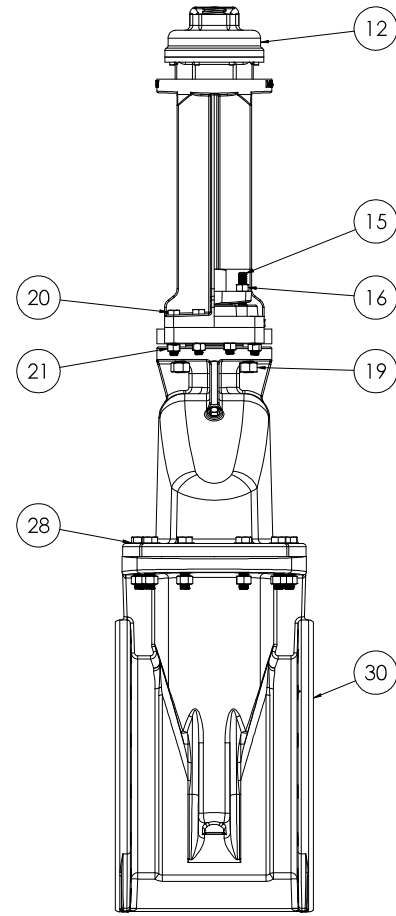
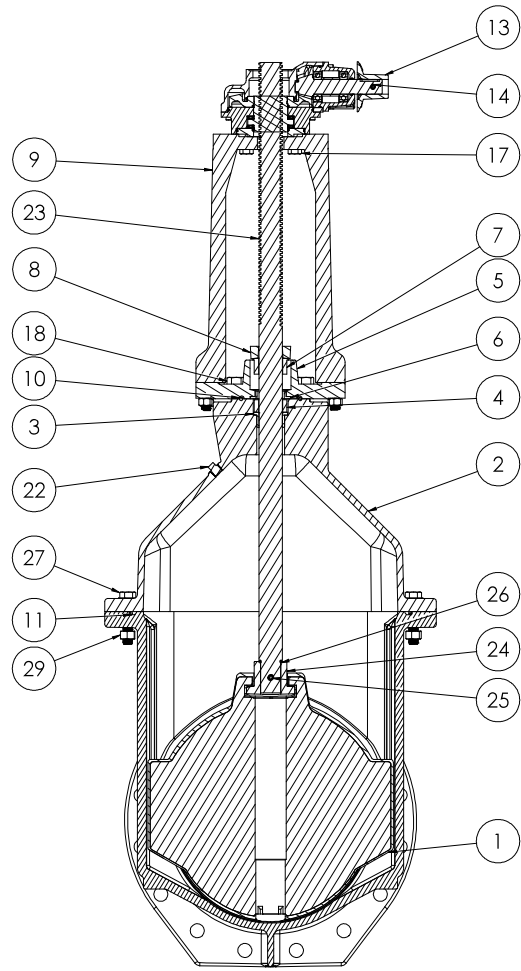
# BARE STEM



BARE STEM MOUNTING FLG



COMPANY: CLW ADDRESS: 12470 130th Ave SE BELLEVUE, WA 98005 PHONE: (206) 465-1100 FAX: (206) 465-1101 WWW: www.clw.com		PROJECT: 16" CS15 OS&Y GEARED RESILIENT WEDGE GATE VALVE LBS.		SHEET: 4 TOTAL: 7	DATE: 12/4/2008 DRAWN BY: CW CHECKED BY:	SCALE: T:5 PROJECT NO: 2016 SP2	DRAWN BY: CW CHECKED BY:	DATE: 12/4/2008 SCALE: T:5 PROJECT NO: 2016 SP2	SHEET: 4 TOTAL: 7	CLW 12/4/08
---	--	--	--	----------------------	--	------------------------------------	-----------------------------	---	----------------------	----------------



COMPANY: CLW ADDRESS: 1574/2020 PHONE: 1574/2020 FAX: 1574/2020 E-MAIL: 1574/2020		PROJECT: 16" CS15 CS&Y GEARED RESILIENT WEDGE GATE VALVE DRAWING NO.: 1574/2020 DATE: 12/4/2020		SHEET NO.: 5 TOTAL SHEETS: 7		SCALE: 1:5 DRAWN BY: SJK CHECKED BY: SJK	PROJECT NO.: 1574/2020 DRAWING NO.: 1574/2020 DATE: 12/4/2020	SHEET NO.: 5 TOTAL SHEETS: 7	PROJECT NO.: 1574/2020 DRAWING NO.: 1574/2020 DATE: 12/4/2020	SHEET NO.: 5 TOTAL SHEETS: 7
---	--	---	--	---------------------------------	--	--	---	---------------------------------	---	---------------------------------

ITEM NO.	COMPONENT	QTY.	SIZE	STANDARD MATERIAL	MATERIAL OPTIONS
1	WEDGE	1	-	EPDM/DUCTILE IRON	-
2	COVER	1	-	DUCTILE IRON	-
3	COVER BUSHING	1	-	C87850	-
4	SPACER	1	-	C87850	-
5	STUFFING BOX	1	-	DUCTILE IRON	-
6	BUSHING	1	-	C87850	-
7	GLAND	1	-	C87850	-
8	FOLLOWER PLATE	1	-	CAST IRON	-
9	YOKE	1	-	DUCTILE IRON	-
10	O-RING	1	#425	EPDM	BUNA-N
11	O-RING	1	#463	EPDM	BUNA-N
12	BEVEL GEAR	1	-	-	SPUR GEAR
13	OPERATING NUT	1	-	CAST IRON	DUCTILE IRON, C86700, 304 SS, 316 SS **Ø 12" HW**, **Ø 24" HW**
14	COILED SPRING PIN	1	10MM X 45MM	302/304 SS	-
15	THREADED STUD	2	5/8"-11 X 3 1/2"	18-8 SS	316 SS
16	HEX NUT	2	5/8"-11	18-8 SS	316 SS
17	HEX HEAD CAP SCREW	4	5/8"-11 X 2"	18-8 SS	316 SS
18	HEX HEAD CAP SCREW	4	7/8"-9 X 3 1/2"	18-8 SS	316 SS
19	HEX NUT	4	7/8"-9	18-8 SS	316 SS
20	HEX HEAD CAP SCREW	8	5/8"-11 X 3 1/4"	18-8 SS	316 SS
21	HEX NUT	8	5/8"-11	18-8 SS	316 SS
22	PLUG	1	1/2" NPT	18-8 SS	316 SS
23	STEM	1	-	C46400	C65500 (LOW ZINC), 304 SS, 316 SS
24	STEM NUT	1	-	C87850	C87610 (LOW ZINC)
25	PIN	1	1/2" X 3 1/4"	303 SS	-
26	O-RING	1	#325	EPDM	BUNA-N
27	HEX HEAD CAP SCREW	12	3/4"-10 X 3 3/4"	18-8 SS	316 SS
28	WASHER	12	-	18-8 SS	316 SS
29	HEX NUT	12	18-8 SS	18-8 SS	316 SS
30	BODY	1	-	DUCTILE IRON	-

- VALVES CONFORM WITH FOLLOWING STANDARDS
  - AWWA C515
  - NSF 61
- LOW ZINC BRASS STEM AND STEM NUT AVAILABLE
- 100% DOMESTIC FASTENER AND O-RING OPTIONS AVAILABLE
- OPEN LEFT (COUNTERCLOCKWISE) AND OPEN RIGHT (CLOCKWISE) OPTIONS AVAILABLE
- TURNS TO OPEN FROM FULLY CLOSED: 104
  - +/- 5% WITH STANDARD 2:1 BEVEL OR SPUR GEAR
- AWWA MAXIMUM ALLOWABLE CLOSING TORQUE 250 FT-LBS
- OPTIONAL HANDWHEEL CAN BE SUBSTITUTED FOR STANDARD 2" SQUARE OP NUTS
  - \*\*NOTE: STANDARD HANDWHEEL SIZE CALLED OUT IN PARTS LIST\*\*

COMPANY: <b>CLW</b> ADDRESS: 12240 130th Ave SE, Everett, WA 98203 PHONE: (425) 335-7200 FAX: (425) 335-7201 WWW: www.clw.com		PROJECT: 16" CS15 CS&Y GEARED RESILIENT WEDGE GATE VALVE LBS: 1:5 DATE: 12/4/2020		DRAWING NO: 6 SHEET NO: 7 TOTAL SHEETS: 7
---	--	---	--	---