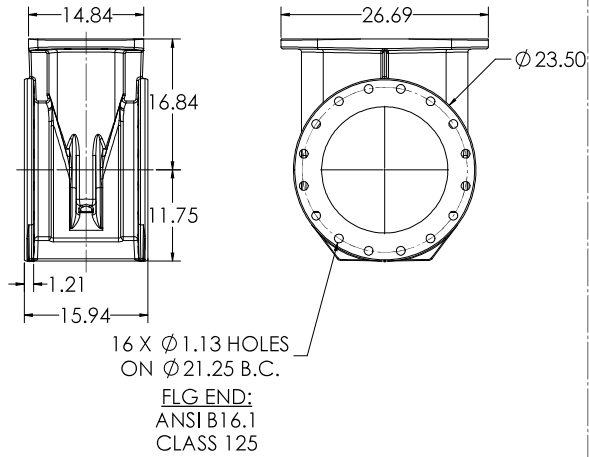
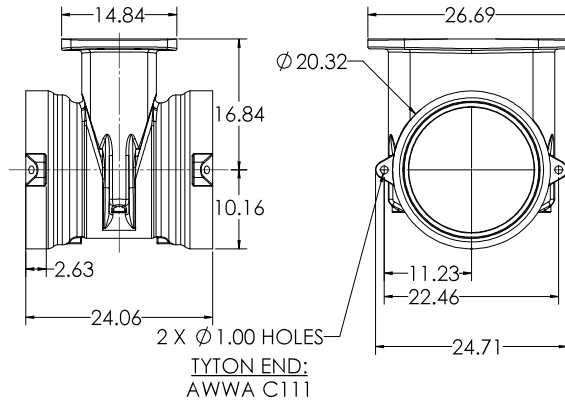


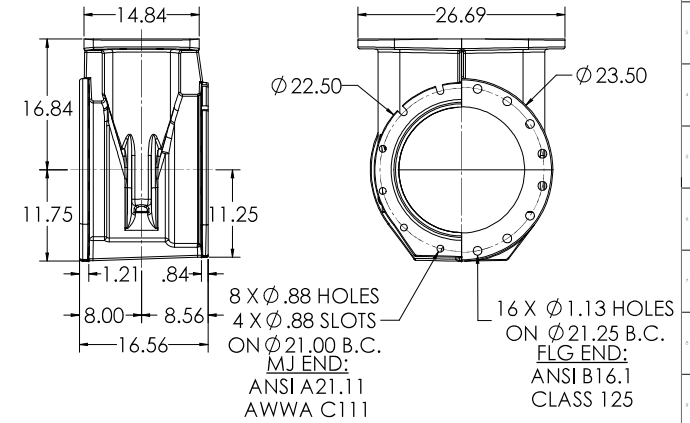
**16" C515 FLG X FLG**



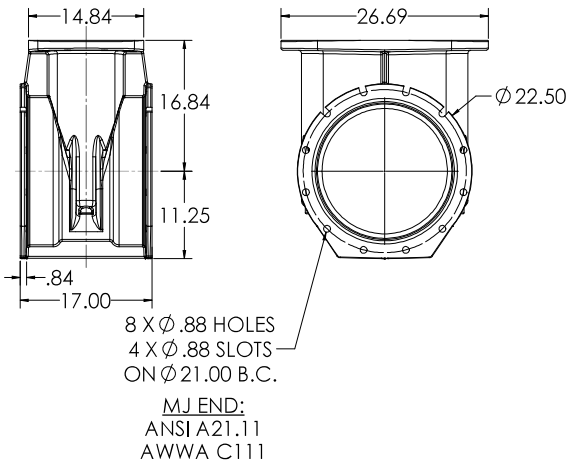
**16" C515 TYTON X TYTON**



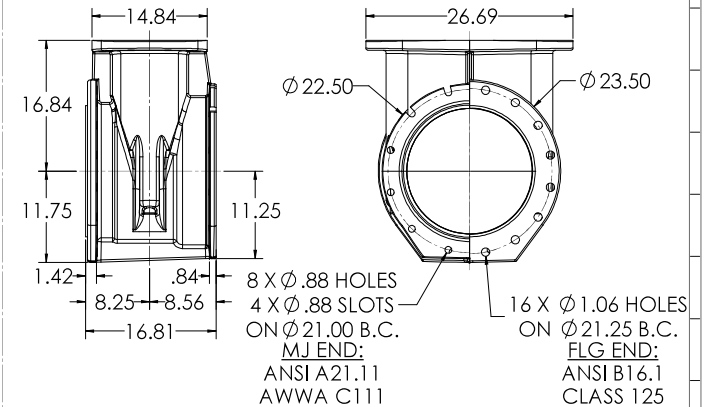
**16" C515 MJ X FLG**



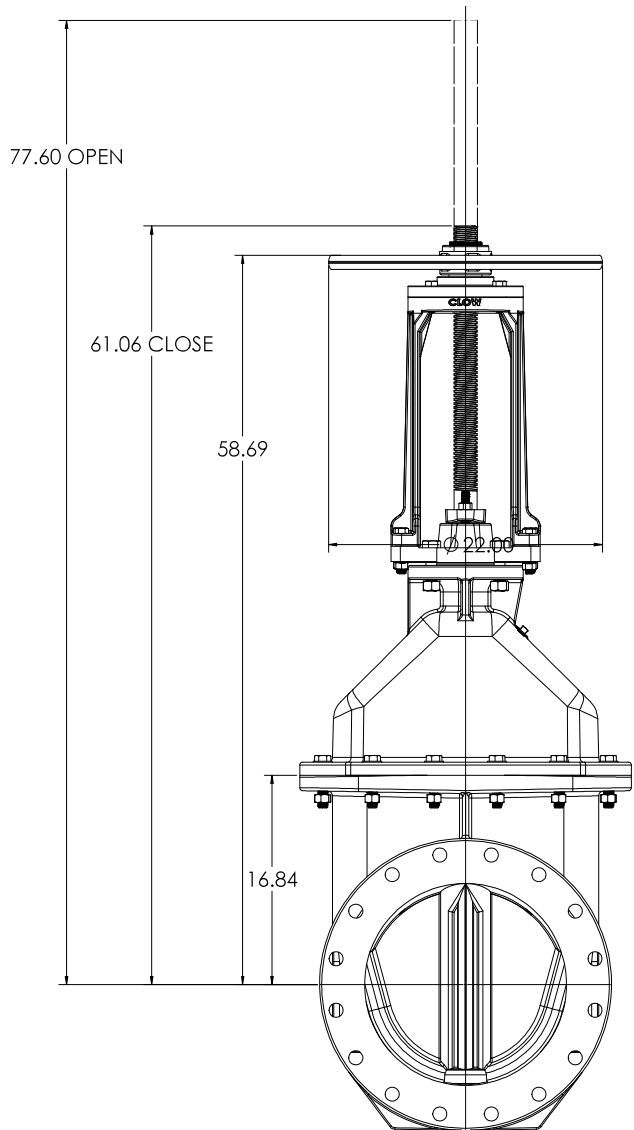
**16" C515 MJ X MJ**



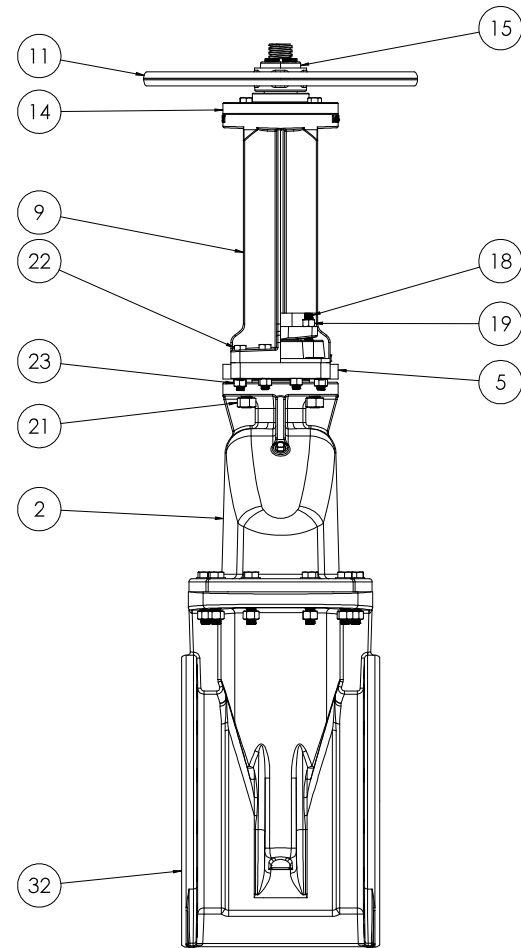
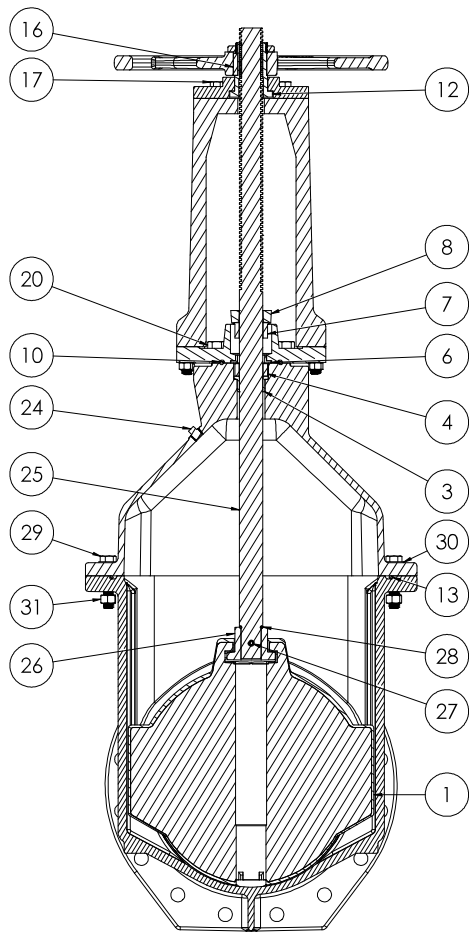
**16" C515 MJ X TAP**



COMPANY: CLW ADDRESS: 1224/2020 CITY: CHICAGO, IL 60642 PHONE: 773.399.1234 FAX: 773.399.1235 WWW: www.clw.com		PROJECT: 16" C515 CS&Y RESILIENT WEDGE LBS. GATE VALVE T88 DATE: 12/4/2020 DRAWN BY: [Name] CHECKED BY: [Name]		SHEET NO: 5 TOTAL SHEETS: 5 PROJECT NO: [Number]
---	--	---	--	--



<b>CLW</b> CONSTRUCTION LOGIC WORKS 1224/2020		16" CS15 CS&Y RESILIENT WEDGE GATE VALVE		2 5	
DATE: 12/24/2020 TIME: 10:00 AM USER: CW	PROJECT: 1224/2020 DRAWING: 1224/2020	SCALE: 1:5 SHEET: 1 OF 1	MATERIAL: LBS	WEIGHT: 100.00	PART: 100.00



COMPANY: CLW ADDRESS: 1224/2020 CITY: CHICAGO, IL 60607 PHONE: (773) 342-1100 FAX: (773) 342-1101 WWW: WWW.CLW.COM		PROJECT: 16" CS15 CS&Y RESILIENT WEDGE GATE VALVE DRAWING NO: 1224/2020 DATE: 12/4/2020 SCALE: 1:5 SHEET NO: 3 OF 5		DRAWN BY: [Blank] CHECKED BY: [Blank] APPROVED BY: [Blank]	PROJECT NO: A SHEET NO: 3 TOTAL SHEETS: 5
---	--	---	--	--	---

ITEM NO.	COMPONENT	QTY.	SIZE	STANDARD MATERIAL	MATERIAL OPTIONS
1	WEDGE	1	-	EPDM/DUCTILE IRON	-
2	COVER	1	-	DUCTILE IRON	-
3	COVER BUSHING	1	-	C87850	-
4	SPACER	1	-	C87850	-
5	STUFFING BOX	1	-	DUCTILE IRON	-
6	BUSHING	1	-	C87850	-
7	GLAND	1	-	C87850	-
8	FOLLOWER PLATE	1	-	CAST IRON	-
9	YOKE	1	-	DUCTILE IRON	-
10	O-RING	1	#425	EPDM	BUNA-N
11	HANDWHEEL	1	Ø 22"	CAST IRON	-
12	TOP STEM NUT	1	-	C86700	C99400 (LOW ZINC)
13	O-RING	1	#463	EPDM	BUNA-N
14	OS&Y RETAINER PLATE	1	-	CAST IRON	-
15	HOLD DOWN NUT	1	-	C87850	-
16	STEM KEY	1	3/8" X 1 3/4"	18-8 SS	316 SS
17	HEX HEAD CAP SCREW	4	5/8"-11 X 2"	18-8 SS	316 SS
18	THREADED STUD	2	5/8"-11 X 3 1/2"	18-8 SS	316 SS
19	HEX NUT	2	5/8"-11	18-8 SS	316 SS
20	HEX HEAD CAP SCREW	4	7/8"-9 X 3 1/2"	18-8 SS	316 SS
21	HEX NUT	4	7/8"-9	18-8 SS	316 SS
22	HEX HEAD CAP SCREW	8	5/8"-11 X 3 1/4"	18-8 SS	316 SS
23	HEX NUT	8	5/8"-11	18-8 SS	316 SS
24	PLUG	1	1/2" NPT	18-8 SS	316 SS
25	STEM	1	D-20617	C46400	C65500 (LOW ZINC), 304 SS, 316 SS
26	STEM NUT	1	-	C87850	C87610 (LOW ZINC)
27	PIN	1	-	303 SS	-
28	O-RING	1	#325	EPDM	BUNA-N
29	HEX HEAD CAP SCREW	12	3/4"-10 X 3 3/4"	18-8 SS	316 SS
30	WASHER	12	WASHER	18-8 SS	316 SS
31	HEX NUT	12	3/4"-10	18-8 SS	316 SS
32	BODY	1	-	DUCTILE IRON	-

- VALVES CONFORM WITH THE FOLLOWING STANDARDS
  - AWWA C515
  - NSF 61
- LOW ZINC BRASS STEM AND STEM NUT AVAILABLE
- 100% DOMESTIC FASTENERS AND ORINGS OPTIONS AVAILABLE
- OPEN LEFT (COUNTERCLOCKWISE) AND OPEN RIGHT (CLOCKWISE) OPTIONS AVAILABLE
- TURNS TO OPEN FROM FULLY CLOSED: 52
- AWWA MAXIMUM ALLOWABLE CLOSING TORQUE 275 FT-LBS

		16" CS15 OS&Y RESILIENT WEDGE GATE VALVE	
DATE: 12/4/2020 TIME: 10:00 AM USER: CW	PROJECT: 12/4/2020	SCALE: 1:5	SHEET: 4 OF 5