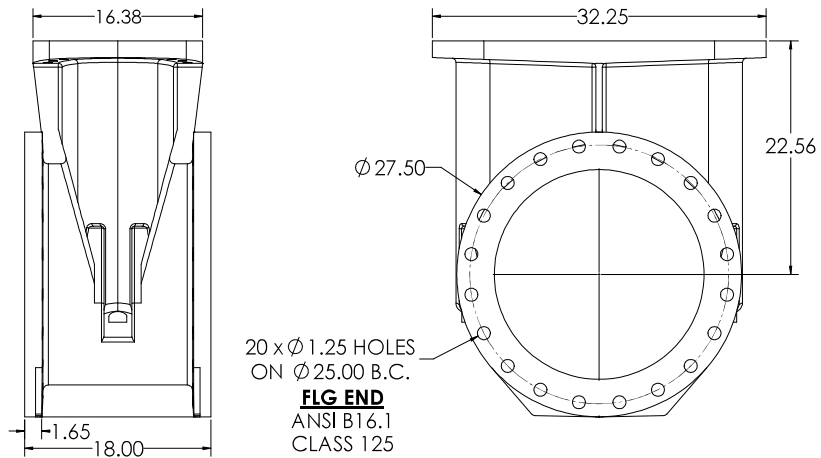
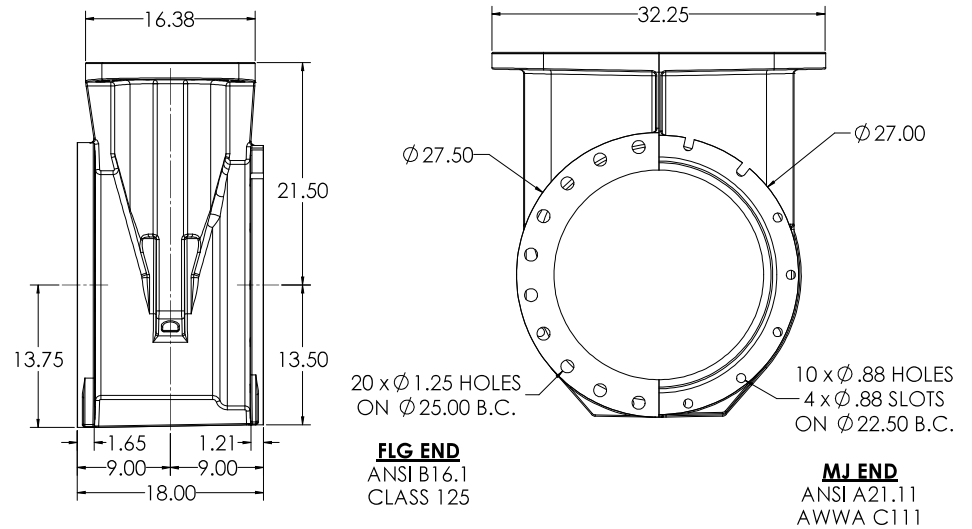


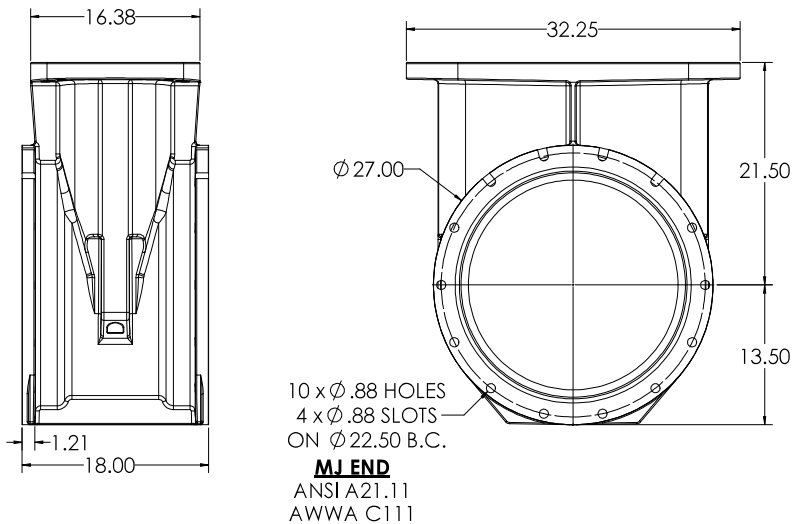
20" C515 FLG X FLG



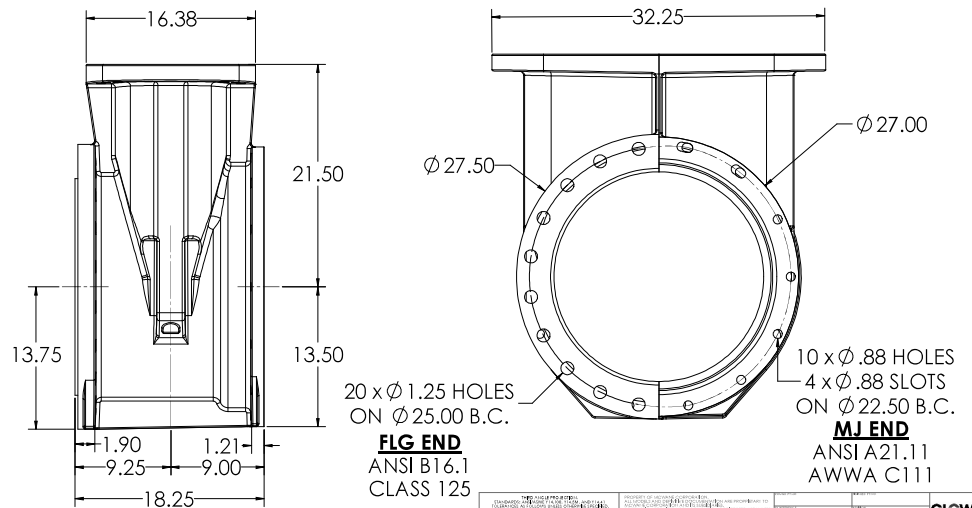
20" C515 FLG X MJ



20" C515 MJ X MJ

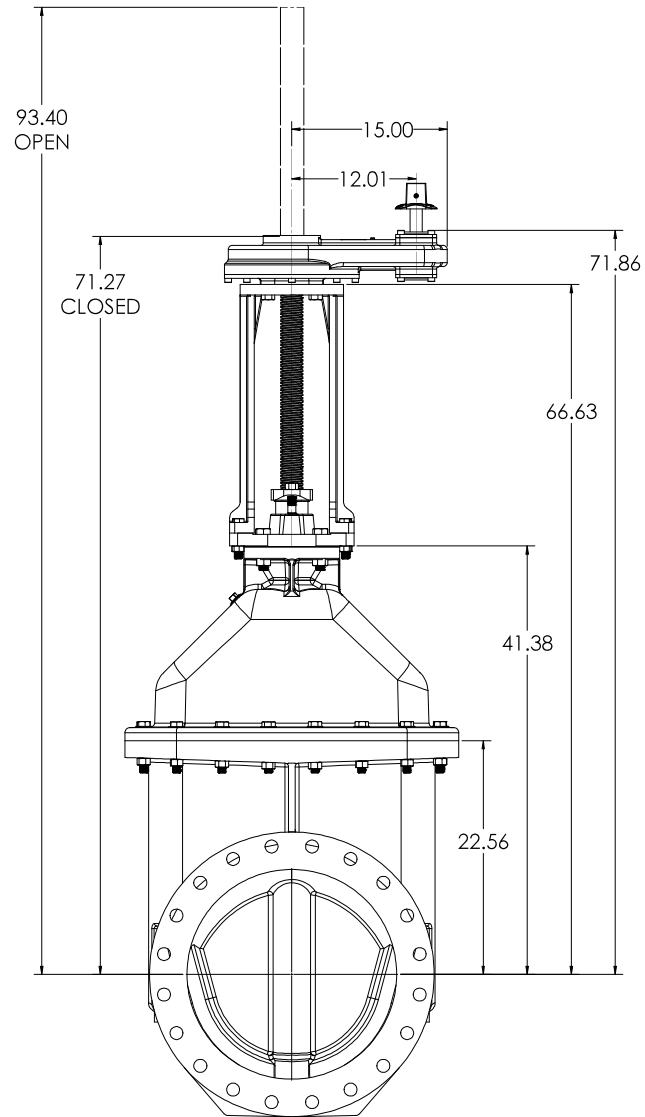


20" C515 TAP X MJ

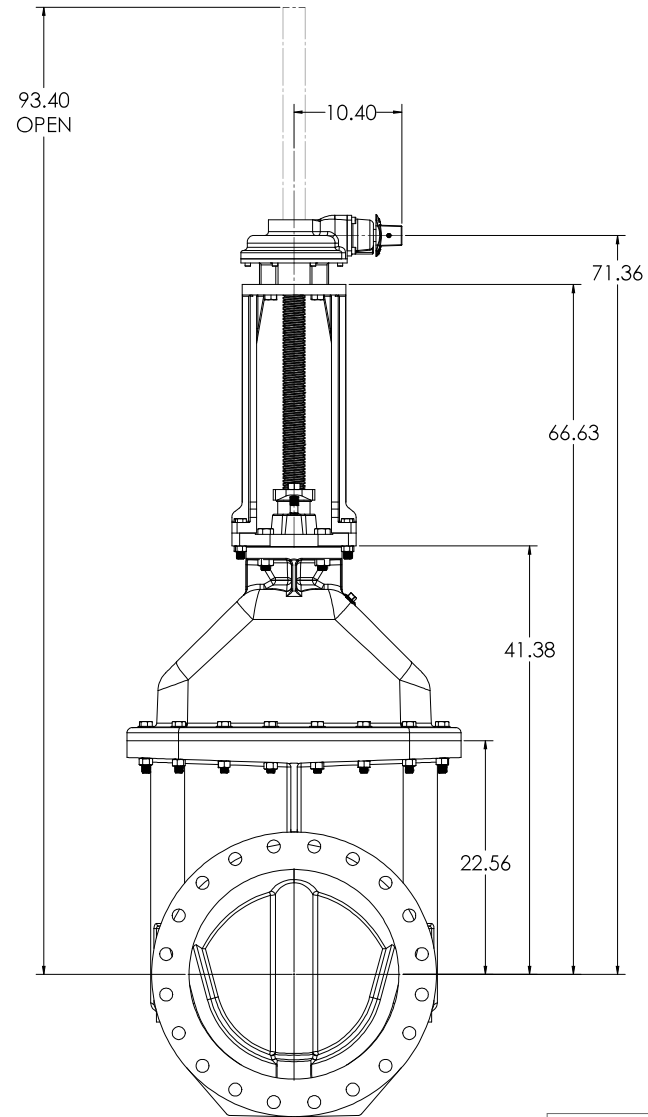


COMPANY: CLW ADDRESS: 10000 W. 10th Ave., Suite 100 DENVER, CO 80231 PHONE: 303.751.1000 FAX: 303.751.1001 WWW: www.clw.com		PROJECT: 20" C515 CS&Y RESILIENT WEDGE GATE VALVE SHEET: T-6 DATE: 10/20/2016		DRAWN: DWI CHECKED: T-6 DATE: 10/20/2016	PROJECT NO: A SHEET NO: 7 TOTAL SHEETS: 7	CLW 10/20/2016
--	--	---	--	--	---	-------------------

SPUR GEAR WITH OP NUT

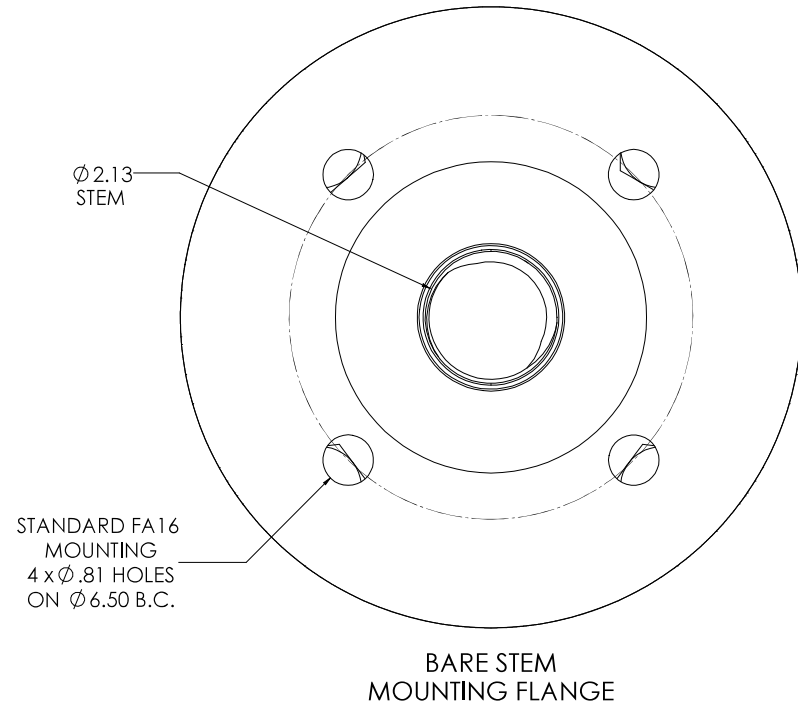
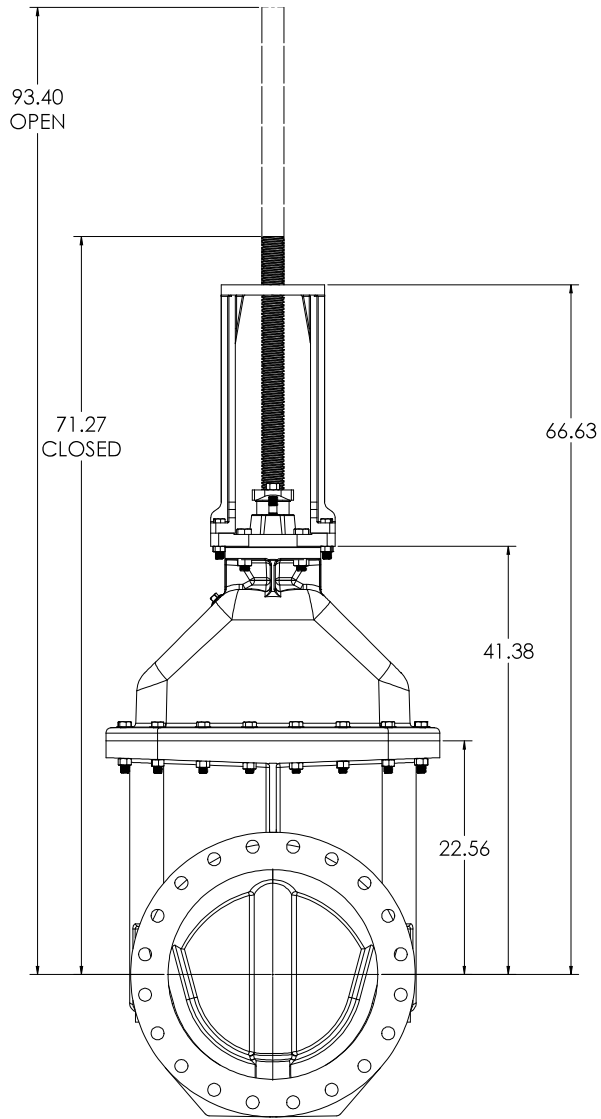


BEVEL GEAR WITH OP NUT

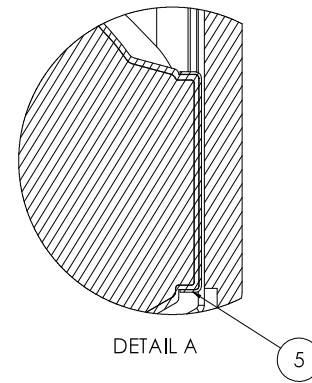
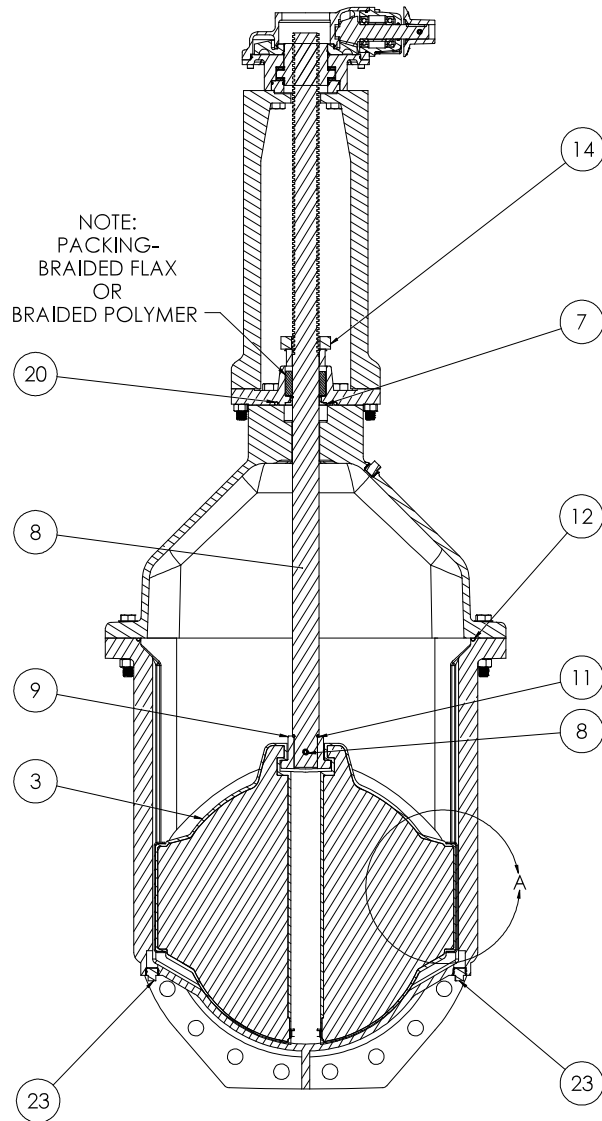
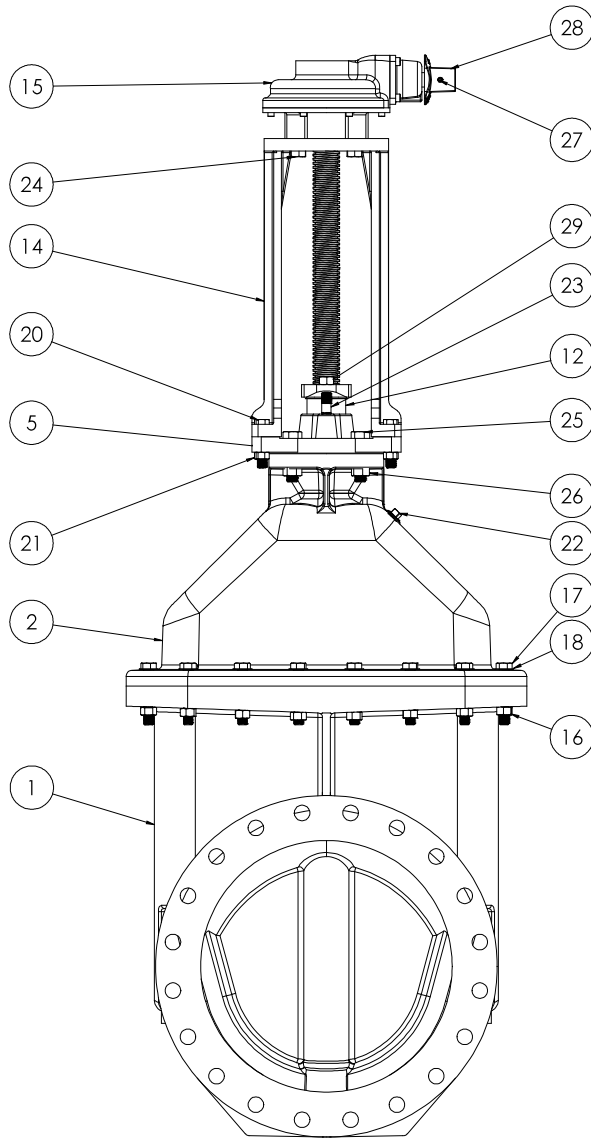


DWG NO: 1340420 DATE: 11/11/16 DESIGNED BY: DWI CHECKED BY: T:6 DRAWN BY: DWI SCALE: 1:6 SHEET NO: 7 TOTAL SHEETS: 7		PROJECT NO: 1340420 PROJECT NAME: 20" CS15 CS&Y RESILIENT WEDGE GATE VALVE WEIGHT: LBS MATERIAL: CS15 MANUFACTURER: SolerWorks 2016 SP2	DRAWING NO: A SHEET NO: 7 TOTAL SHEETS: 7	CLW 1340420
---	--	---	---	----------------

BARE STEM ASSEMBLY



DWG NO: 134420 DATE: 1/15/16 DRAWN: DWI CHECKED: TSG		PROJECT NO: 134420 PROJECT NAME: 20' CS15 CS&Y RESILIENT WEDGE GATE VALVE SHEET NO: 7 TOTAL SHEETS: 7		SCALE: T:6 MATERIAL: LBS WEIGHT: 134420		REVISIONS: A DATE: 1/15/16 BY: DWI		APPROVED: [Signature] DATE: 1/15/16		COMPANY: CLW ADDRESS: 10000 W. 10th Ave., Suite 100, Golden, CO 80401 PHONE: 303.440.1000 FAX: 303.440.1001 WWW: www.clw.com	
---	--	--	--	---	--	--	--	--	--	--	--



CLW CLW Valve Co.		20" CS15 CS&Y RESILIENT WEDGE GATE VALVE		5
DATE: 11/15/16 DWG: 1341620	SCALE: 1:5	MATERIAL: CS15	WEIGHT: 150 LBS	DRAWN BY: DWI
DWG: 1341620		SCALE: 1:5		DRAWN BY: DWI

<u>ITEM NO.</u>	<u>COMPONENT</u>	<u>QTY.</u>	<u>SIZE</u>	<u>STANDARD MATERIAL</u>	<u>MATERIAL OPTIONS</u>
1	BODY	1	-	DUCTILE IRON	-
2	COVER	1	-	DUCTILE IRON	-
3	WEDGE	1	-	DUCTILE IRON/EPDM	-
4	WEDGE CAP	2	-	DELFIN	-
5	STUFFING BOX	1	-	DUCTILE IRON	-
6	BUSHING	1	-	C87850	-
7	STEM	1	-	C65500 (LOW ZINC)	C95400, 304 SS, 316 SS
8	STEM NUT	1	-	C87850	C87610 (LOW ZINC)
9	COILED SPRING PIN	1	1/2" X 3 1/4"	303 SS	-
10	O-RING	1	#327	EPDM	BUNA-N
11	O-RING	1	#469	EPDM	BUNA-N
12	GLAND	1	-	C87850	-
13	FOLLOWER PLATE	1	-	GREY IRON	-
14	YOKE	1	-	CAST IRON	-
15	BEVEL GEAR	1	-	-	-
16	HEX NUT	16	3/4" - 10	18-8 SS	316 SS
17	HEX HEAD CAPSCREW	16	3/4" X 4 1/2"	18-8 SS	316 SS
18	FLAT WASHER	16	3/4"	18-8 SS	316 SS
19	O-RING	1	#425	EPDM	BUNA-N
20	HEX HEAD CAPSCREW	8	5/8" X 3 1/2"	18-8 SS	316 SS
21	HEX NUT	8	5/8" 11	18-8 SS	316 SS
22	PIPE PLUG	3	1" - NPT	304 SS	316 SS
23	STUD	2	3/4" X 3 3/4"	YELLOW ZINC	-
24	HEX HEAD CAPSCREW	4	3/4" X 3 1/2"	18-8 SS	316 SS
25	HEX HEAD CAP SCREW	4	7/8" X 3 1/2"	18-8 SS	316 SS
26	HEX NUT	4	7/8" - 9	18-8 SS	316 SS
27	COILED SPRING PIN	1	10mm X 45mm	302 SS OR 304 SS	-
28	OPERATING NUT	1	-	CAST IRON	304 SS, C86700 ** Ø 16" HANDWHEEL ***
29	HEX NUT	2	3/4" - 10	BRASS	-

- VALVES CONFORM WITH FOLLOWING STANDARDS
 - AWWA C515
 - NSF 61
- LOW ZINC BRASS STEM AND STEM NUT AVAILABLE
- 100% DOMESTIC FASTENER AND O-RING OPTIONS AVAILABLE
- OPEN LEFT (COUNTERCLOCKWISE) AND OPEN RIGHT (CLOCKWISE) OPTIONS AVAILABLE
- TURNS TO OPEN FROM FULLY CLOSED: 228
 - +/- 5% WITH STANDARD 3:1 BEVEL OR SPUR GEAR
- AWWA MAXIMUM ALLOWABLE CLOSING TORQUE 250 FT-LBS WITH STANDARD GEARING
- OPTIONAL HANDWHEEL CAN BE SUBSTITUTED FOR STANDARD 2" SQUARE OP NUTS
 - **NOTE: STANDARD HANDWHEEL SIZE CALLED OUT IN PARTS LIST**

<small> COMPANY: CLW ADDRESS: 10000 W. 104th St., Overland Park, KS 66204 PHONE: (913) 241-1100 FAX: (913) 241-1101 WWW: www.clw.com </small>		<small> PROJECT: 20" CS15 CS&Y RESILIENT WEDGE GATE VALVE SHEET: 6 OF 7 DATE: 1/15/2015 </small>	<small> DRAWN: DWI CHECKED: TSC SCALE: 1:5 PROJECT NO: 1504620 </small>	<small> SHEET NO: 6 TOTAL SHEETS: 7 PROJECT NO: 1504620 </small>	<small> CLW 1504620 </small>
---	--	--	--	--	---