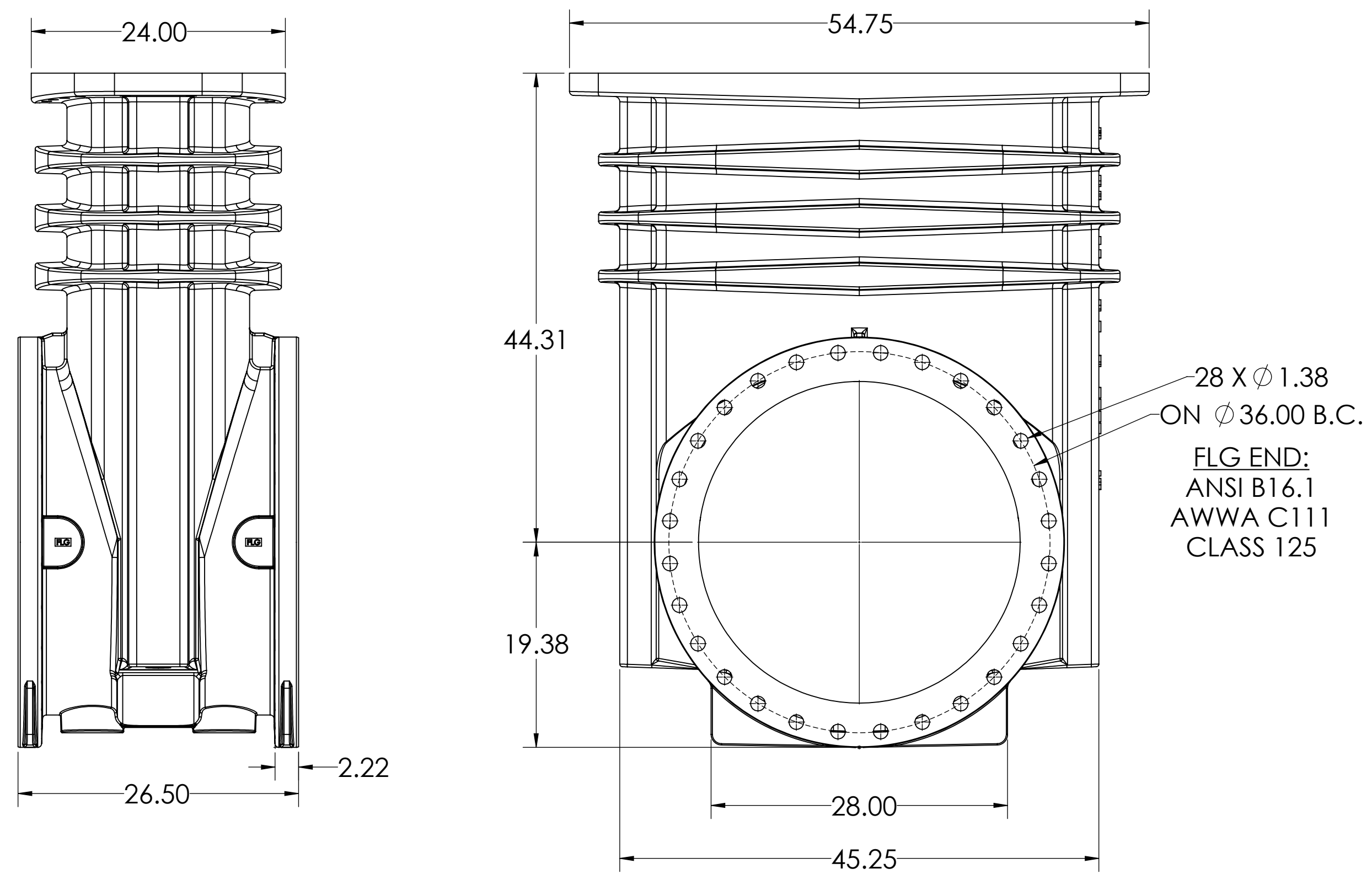
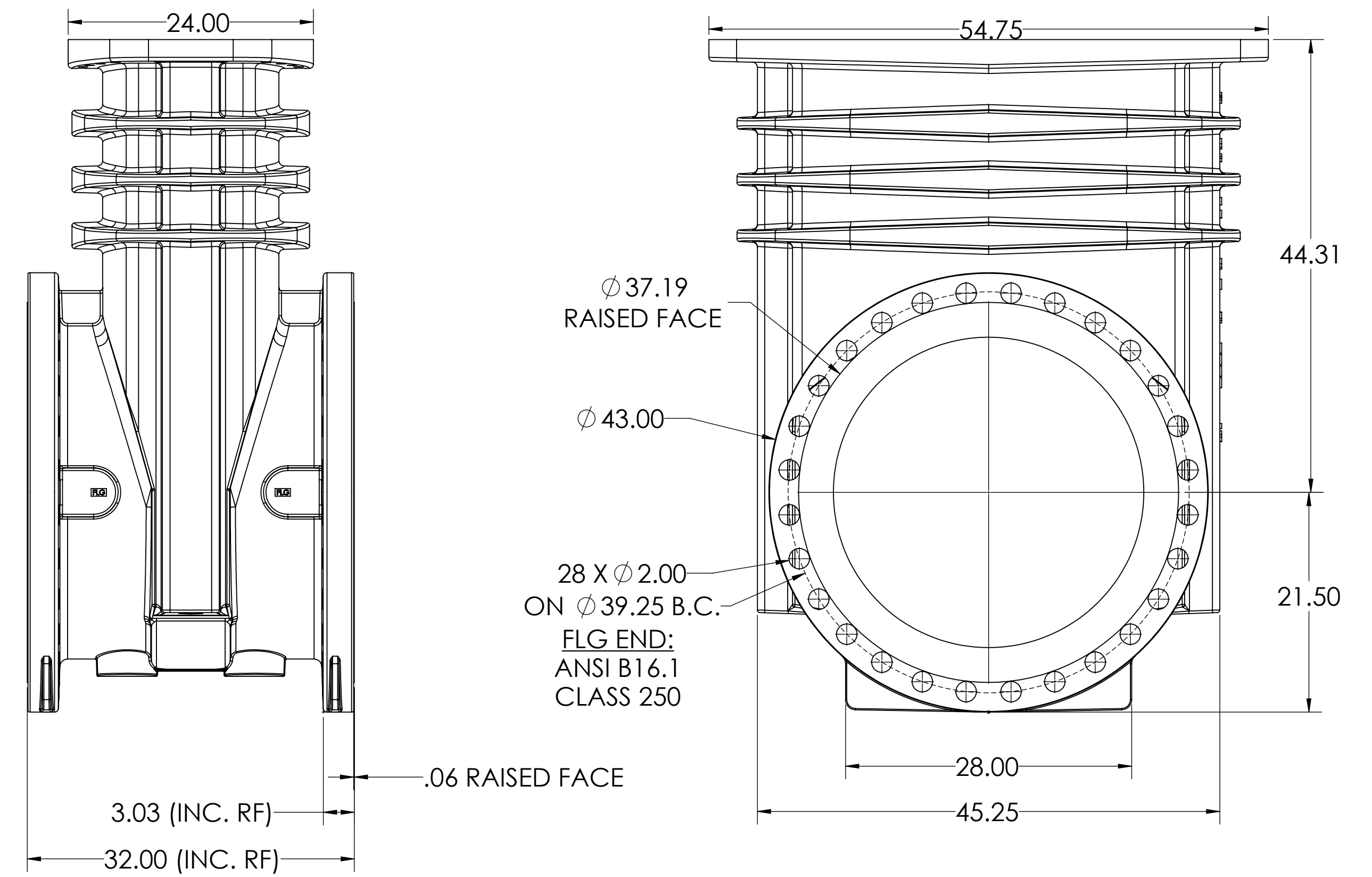


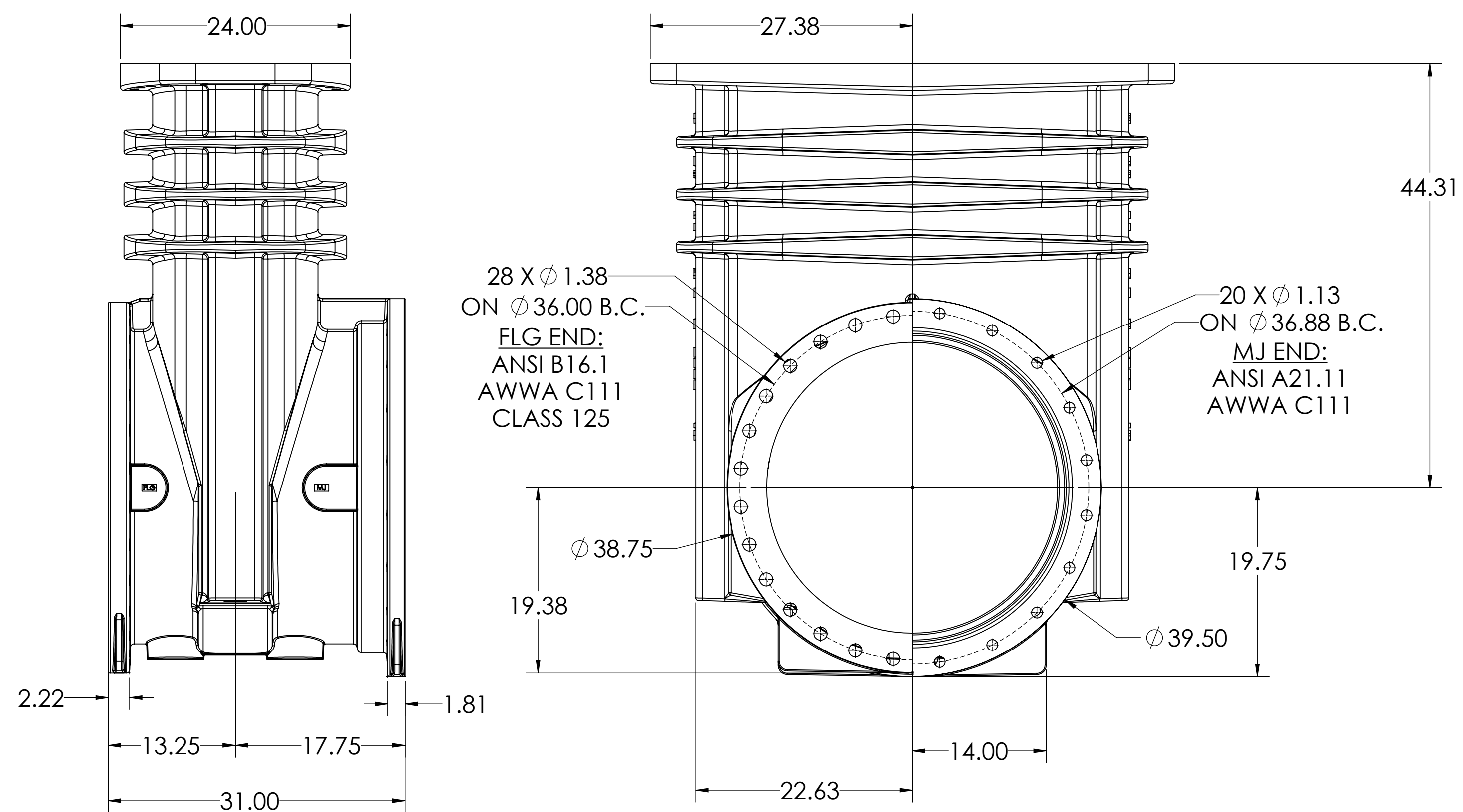
30" C515 FLG X FLG



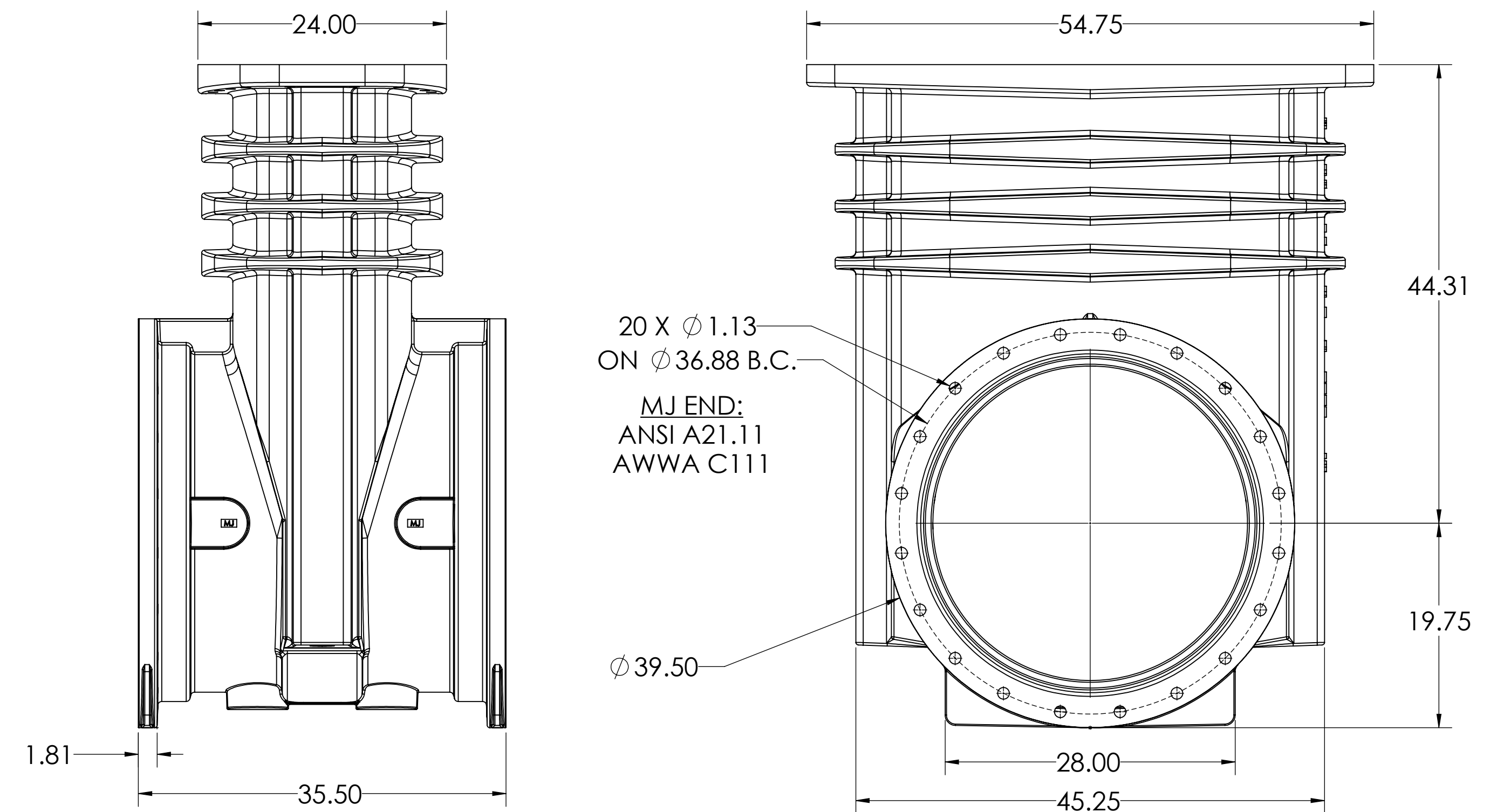
30" C515 250# FLG X FLG



30" C515 FLG X MJ

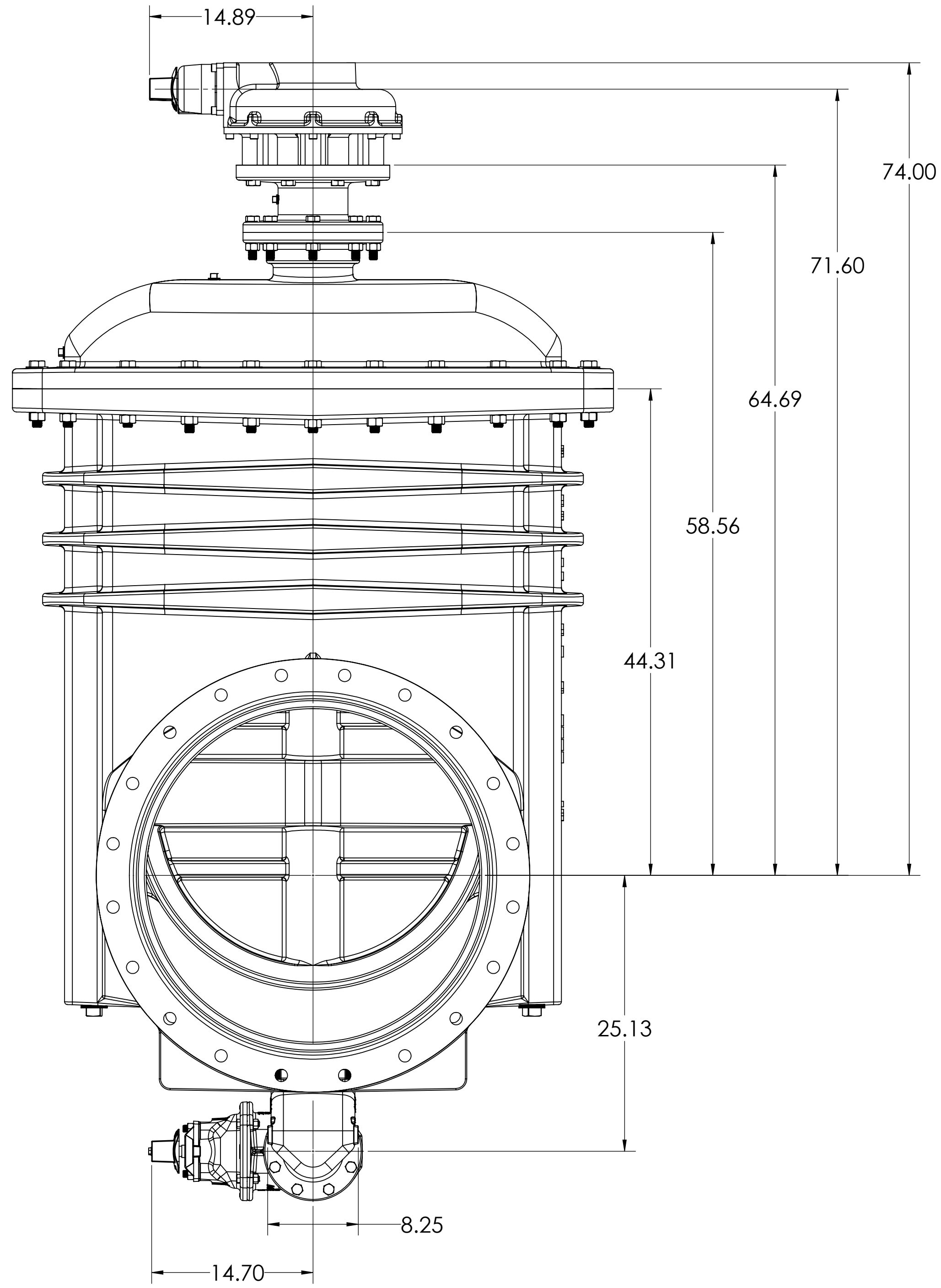


30" C515 MJ X MJ

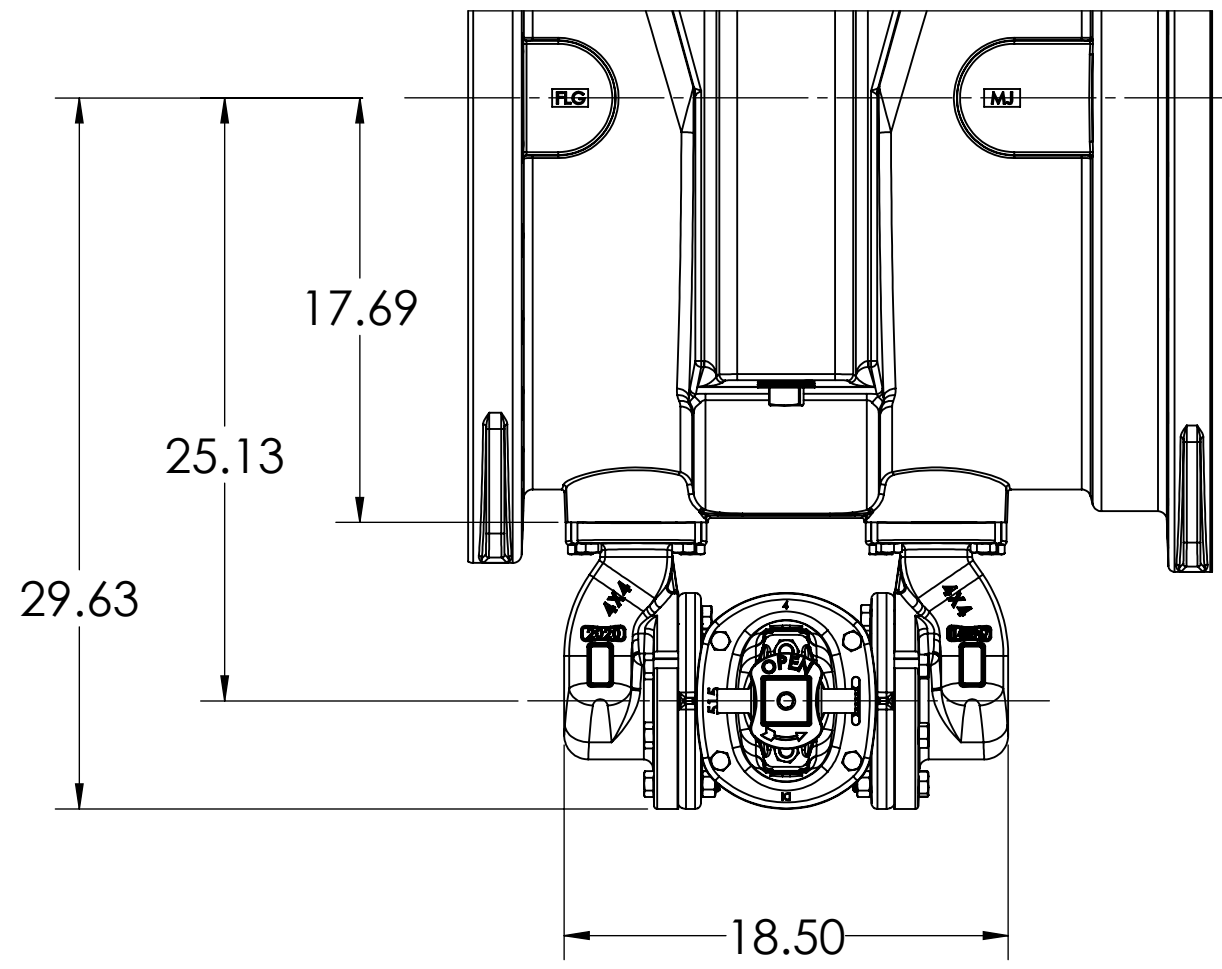


STANDARDS: ANSI B16.1 (150, 125 LBS. AND 150 LBS.) TOLERANCES AS FOLLOWS UNLESS OTHERWISE SPECIFIED.		PROPERTY OF MCWANE CORPORATION. ALL DIMENSIONS AND IDENTIFYING INFORMATION ARE PROPRIETARY TO MCWANE CORPORATION AND ITS SUBSIDIARIES. REPRODUCTION OR TRANSMISSION OF ANY PART OF THIS DOCUMENT IS PROHIBITED WITHOUT THE WRITTEN PERMISSION OF MCWANE CORPORATION. ALL RIGHTS RESERVED.		REV. BY: _____	DATE/REV: _____	CHK. DATE: _____	DATE/CHK: _____	SCALE: _____	DESCRIPTION: 30" NRS RESILIENT SEATED GATE VALVE	CLW VALVE CO.
CASTING TOLERANCES:		MACHINED DIMENSIONS:		MATERIAL:		ESTIMATED WEIGHT:		LBS.		SHEET OF 6
6-8": ± 0.015	9-12": ± 0.010	DECIMALS: ± 0.005	FRACTIONS: ± 1/16"	30" NRS RESILIENT SEATED GATE VALVE		1:10		Solidworks 2018 SP2		D
13-18": ± 0.008	19-24": ± 0.005	ANGLES: ± 1°	SURFACE FINISH: 125 μ m	30" NRS RESILIENT SEATED GATE VALVE		1:10		Solidworks 2018 SP2		D
18-UP": ± 1/8"	MIN RADIUS: 1/8"	RADIUS: ± 1/8"	MIN DRAFT: 2°	30" NRS RESILIENT SEATED GATE VALVE		1:10		Solidworks 2018 SP2		D

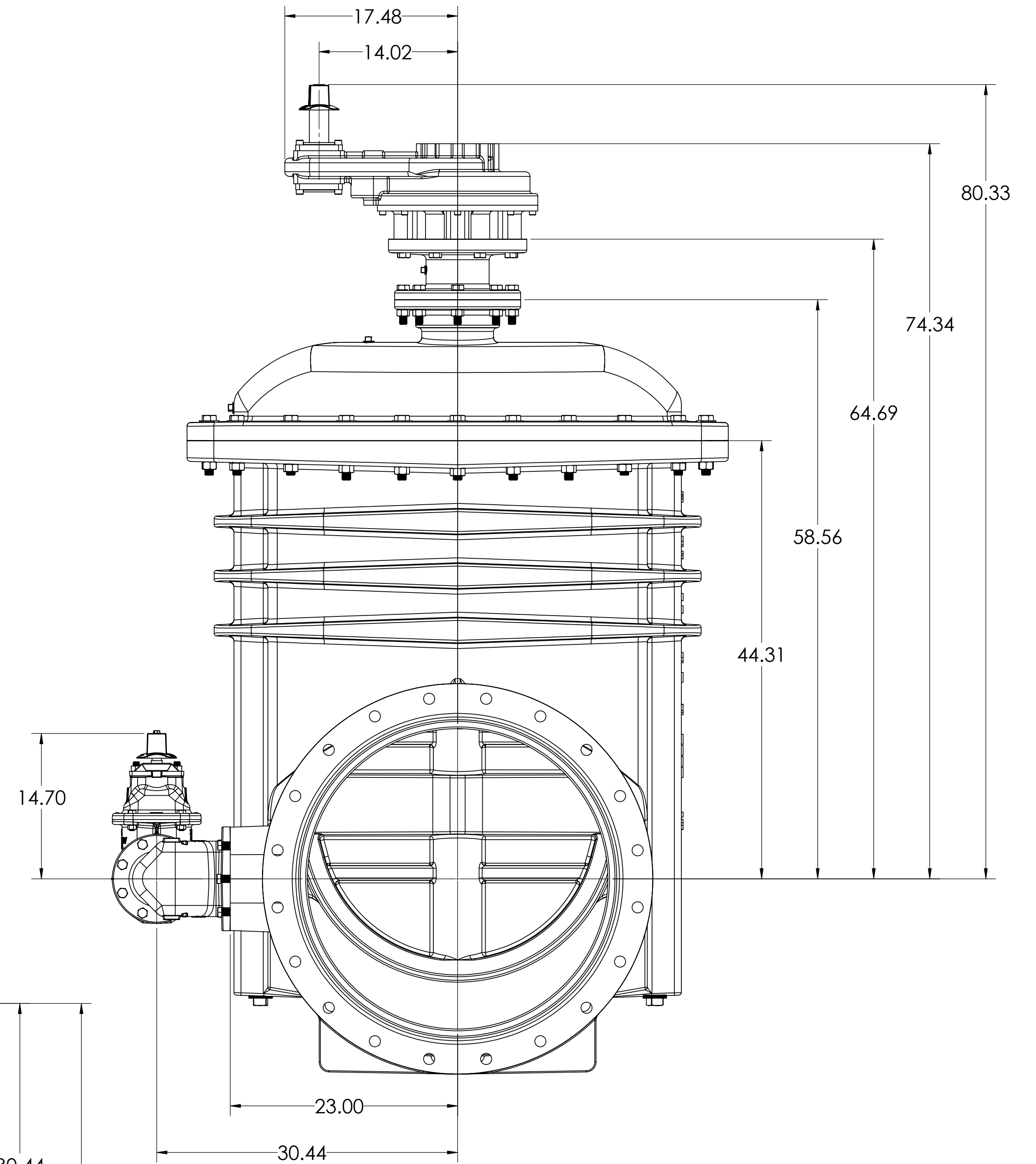
BEVEL GEAR WITH OPTIONAL BOTTOM BYPASS



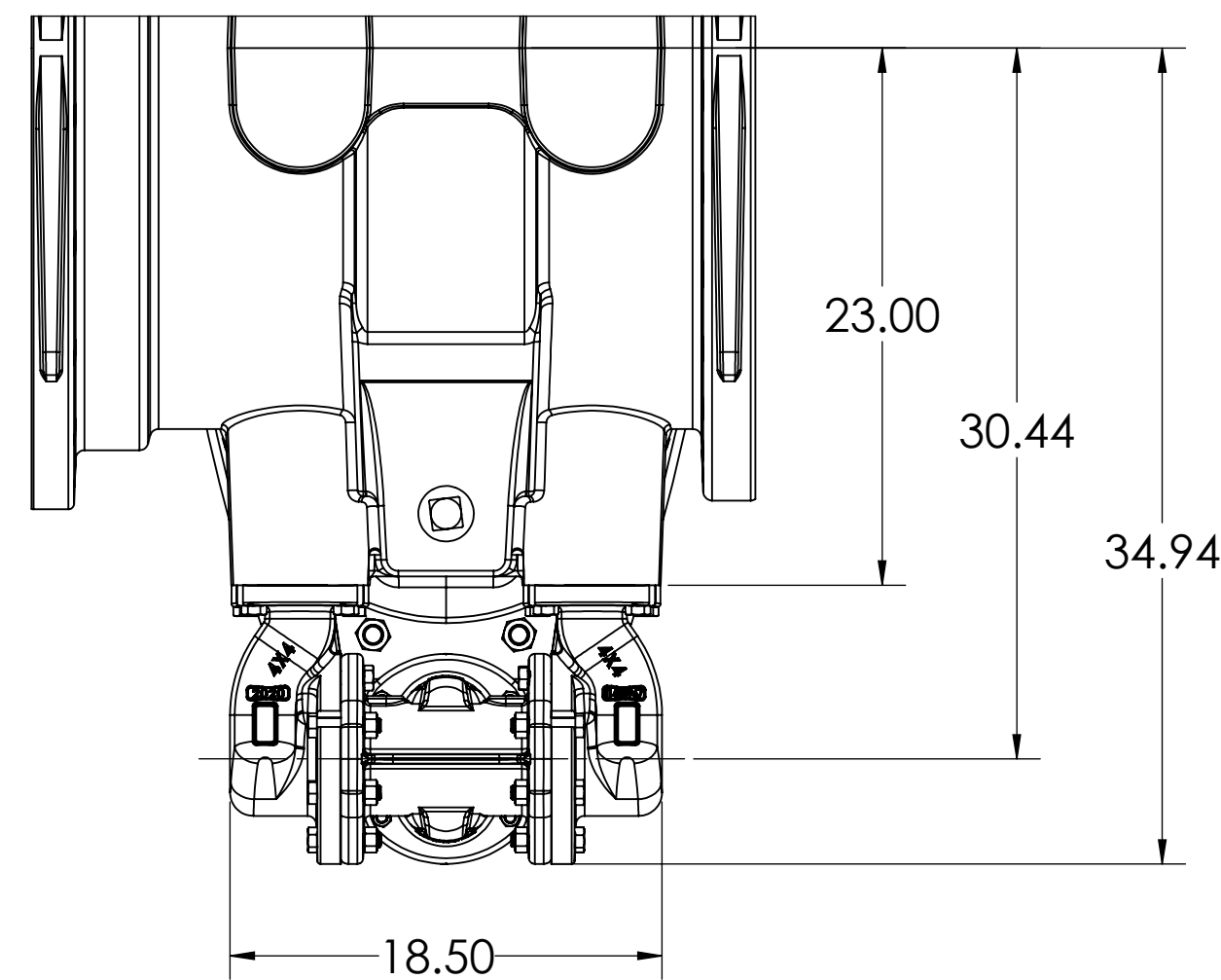
BOTTOM BYPASS



SPUR GEAR WITH OPTIONAL SIDE BYPASS

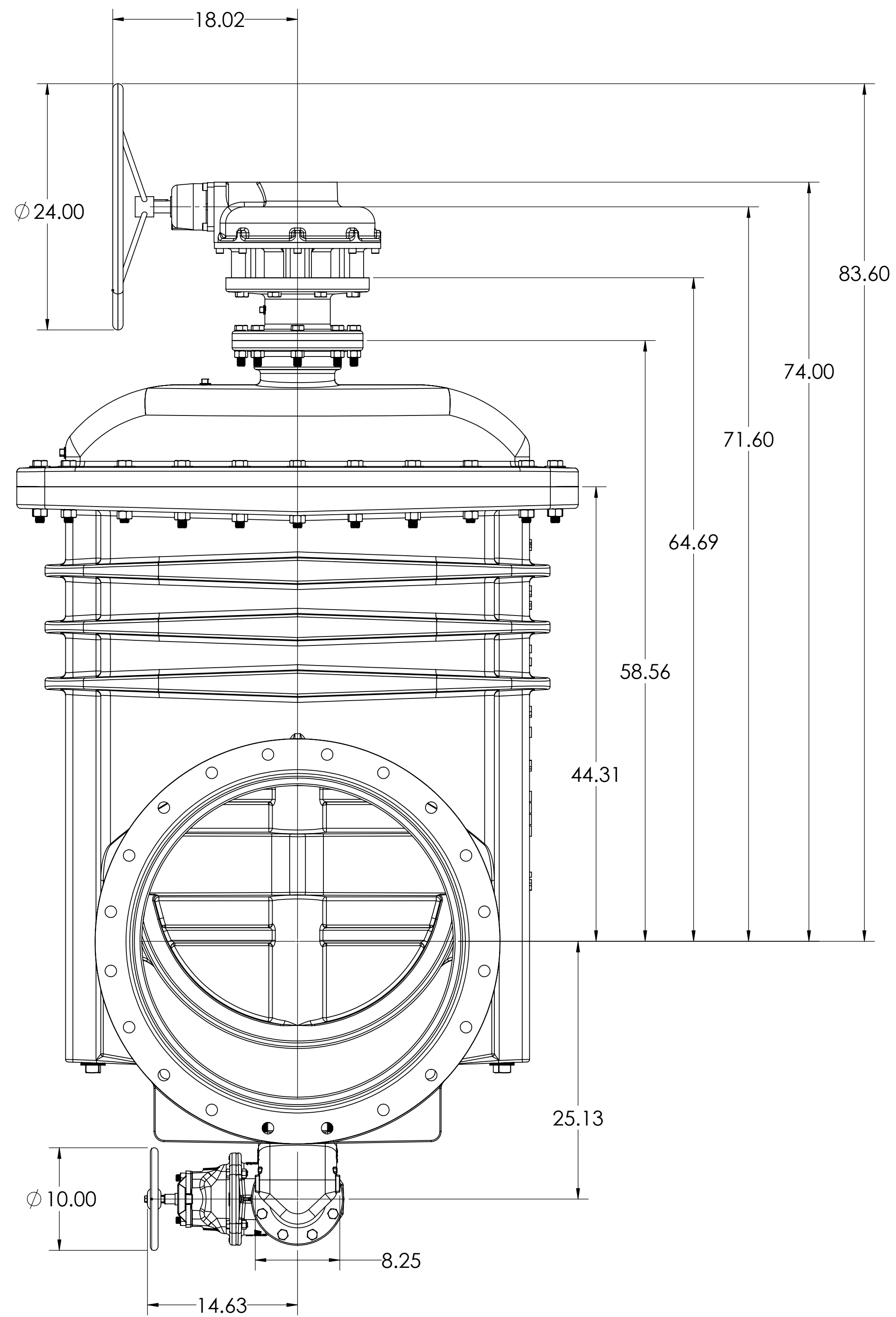


SIDE BYPASS

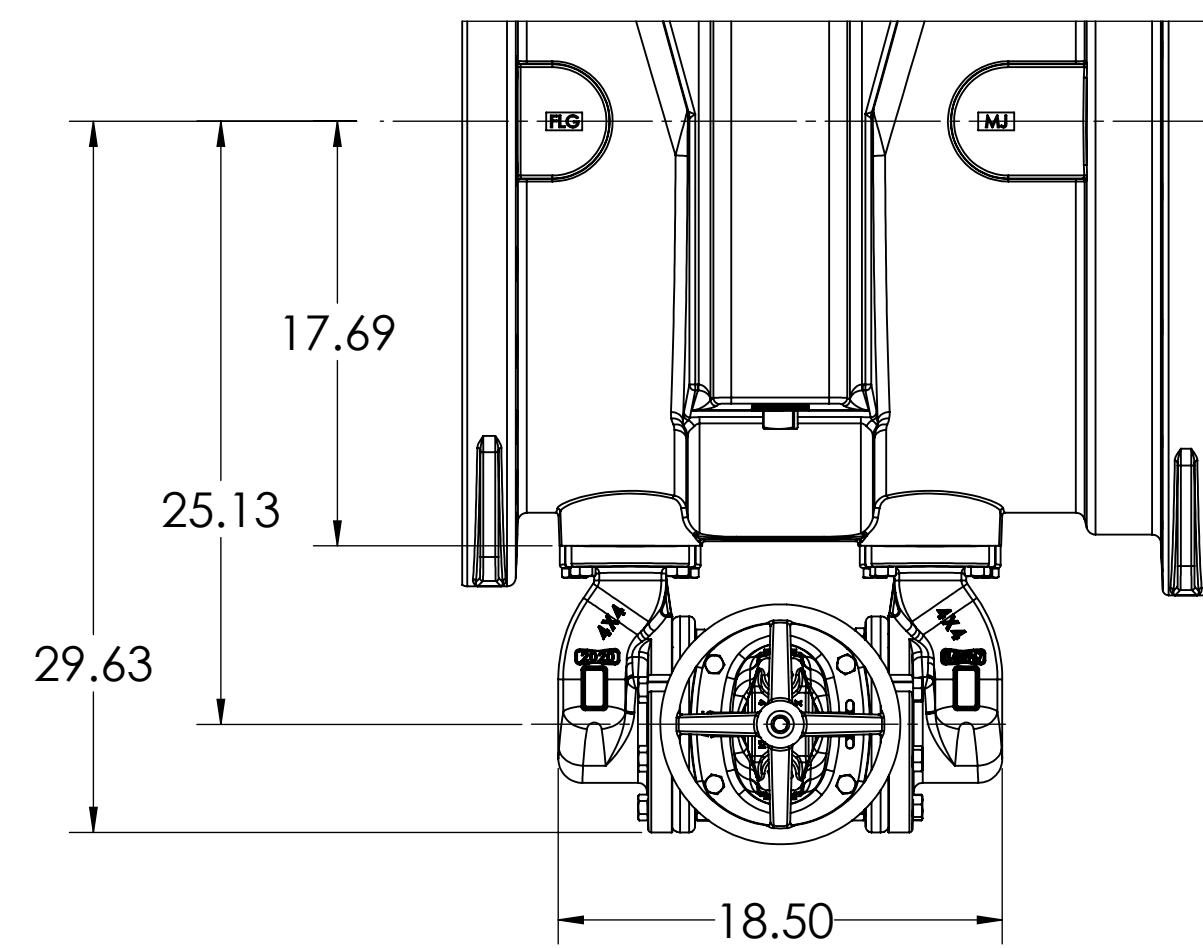


THIRD ANGLE PROJECTION. STANDARDS: ANSI/ASME Y14.1, Y14.2, AND Y14.4. TOLERANCES: AS FOLLOWS UNLESS OTHERWISE SPECIFIED.		PROPERTY OF MCWANE CORPORATION. ALL DIMENSIONS AND IDENTIFICATION ARE PROPRIETARY TO MCWANE CORPORATION AND ITS SUBSIDIARIES. CONSTRUCTION REQUIRED UPON COMPLETION OF DRAWING ARRANGEMENTS. ALL RIGHTS RESERVED.		DESCRIPTION: B
CASTING TOLERANCES:	MATCHED DIMENSIONS:	MATERIAL:	ESTIMATED WEIGHT:	30" NRS RESILIENT SEATED GATE VALVE
1/4": ± 0.015	DECIMALS: ± 0.005		LBS.	
1/2": ± 0.010	FRACTIONS: ± 0.004			
3/4": ± 0.008	ANGLES: ± 1'			
1": ± 0.007	SURFACE FINISH: 125 μin			
1 1/2": ± 0.006	RADS: ± 1/8"			
2": ± 0.005	MIN RADIUS: 1/8"			
MIN DRAFT: 2°				
DATE: 11/18	DATE: 11/18	DATE: 11/18	DATE: 11/18	DATE: 11/18
BY: [Signature]	DATE: 11/18	BY: [Signature]	DATE: 11/18	DATE: 11/18
SCALE: 1:8			SHEET NO: 2	
SHEET OF: 6			SHEET OF: 6	

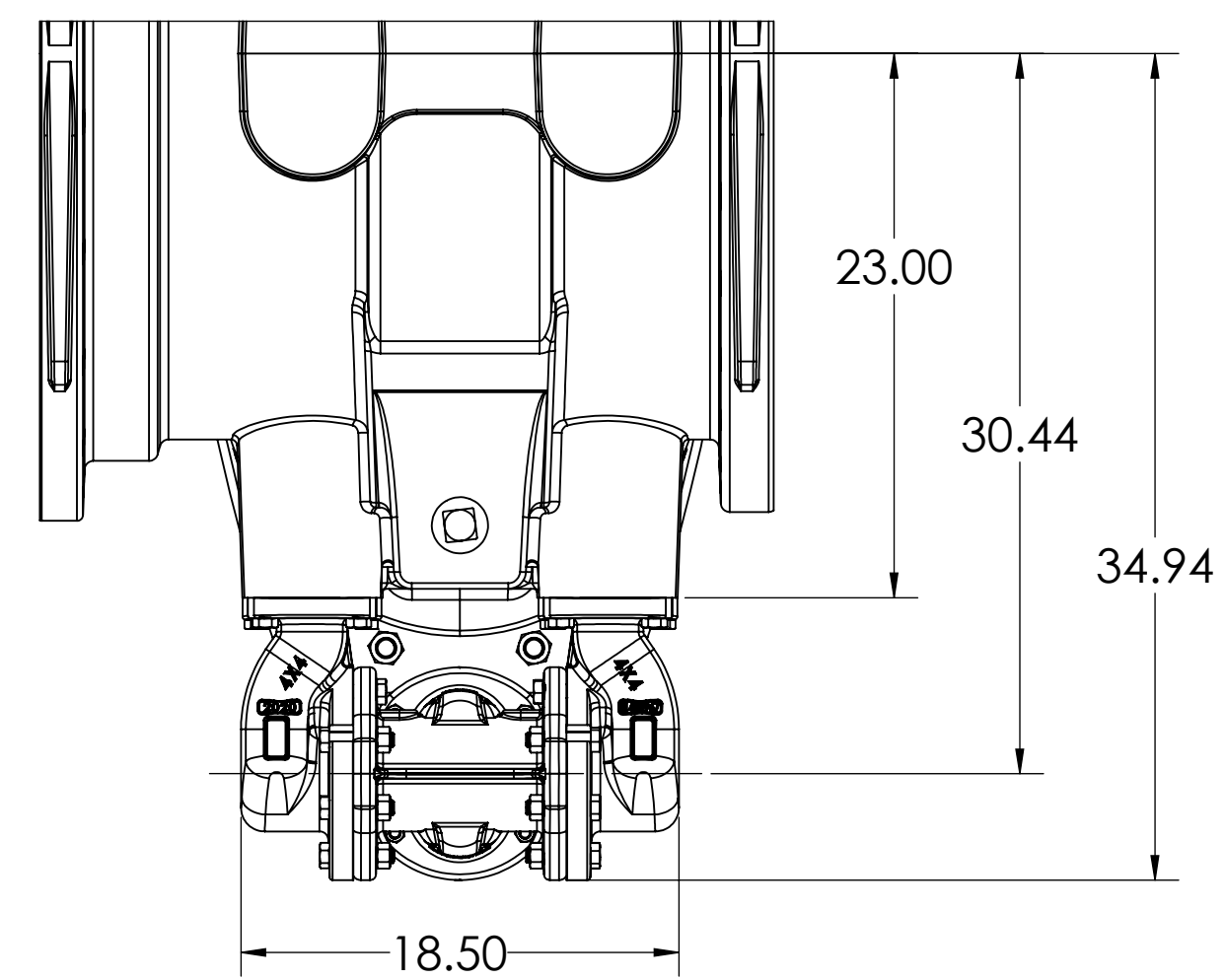
BEVEL GEAR WITH OPTIONAL BOTTOM BYPASS



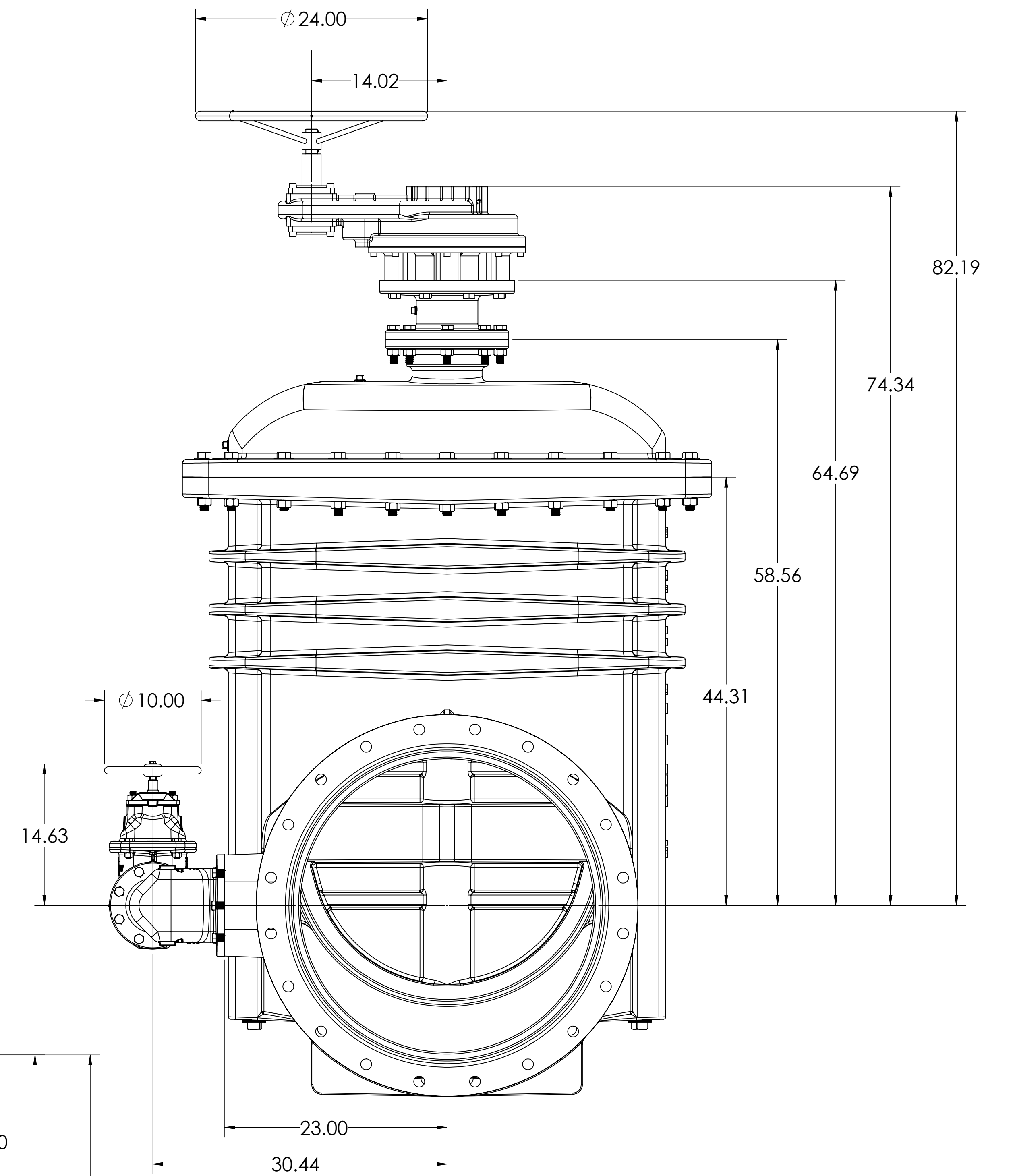
BOTTOM BYPASS



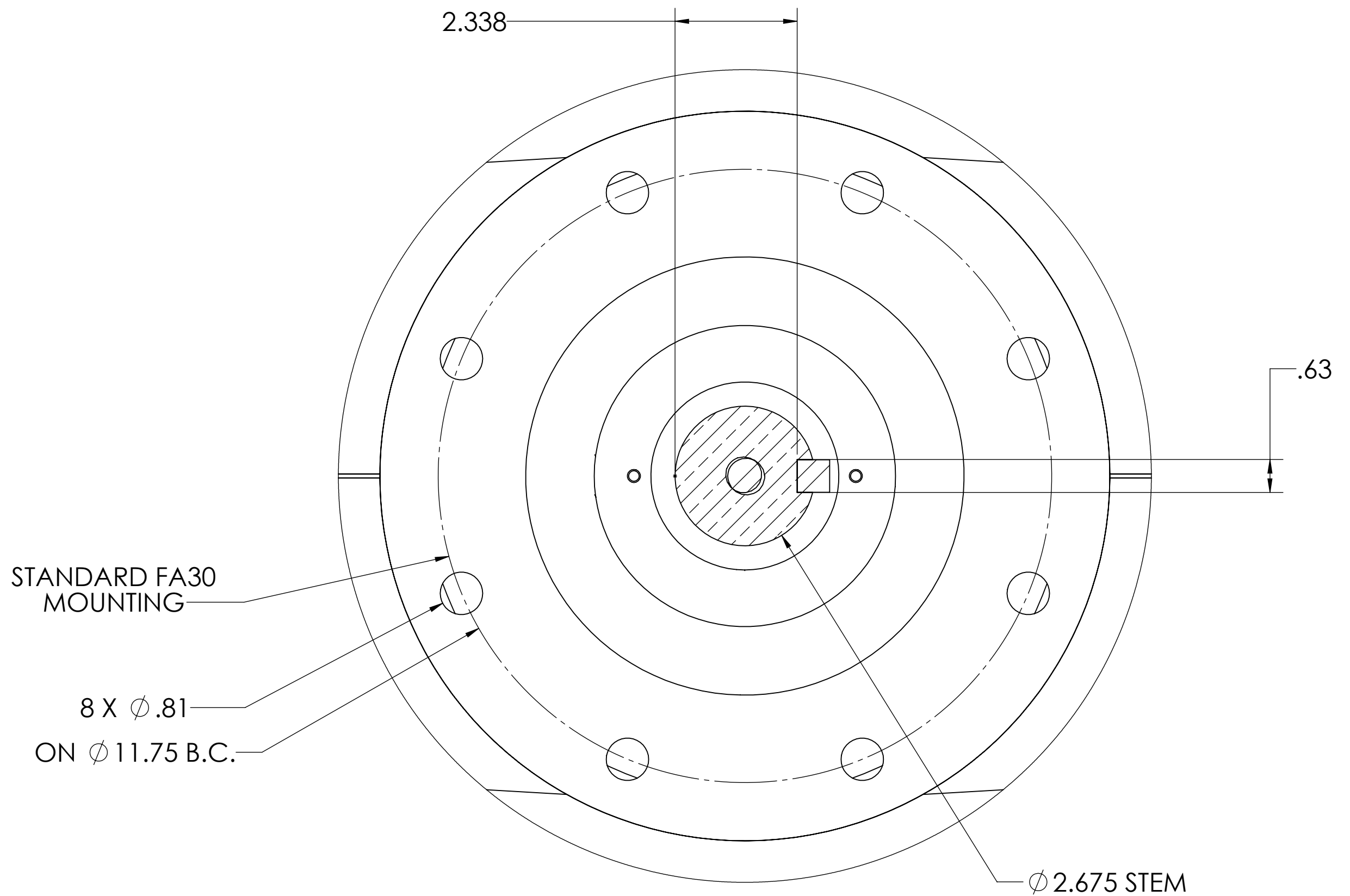
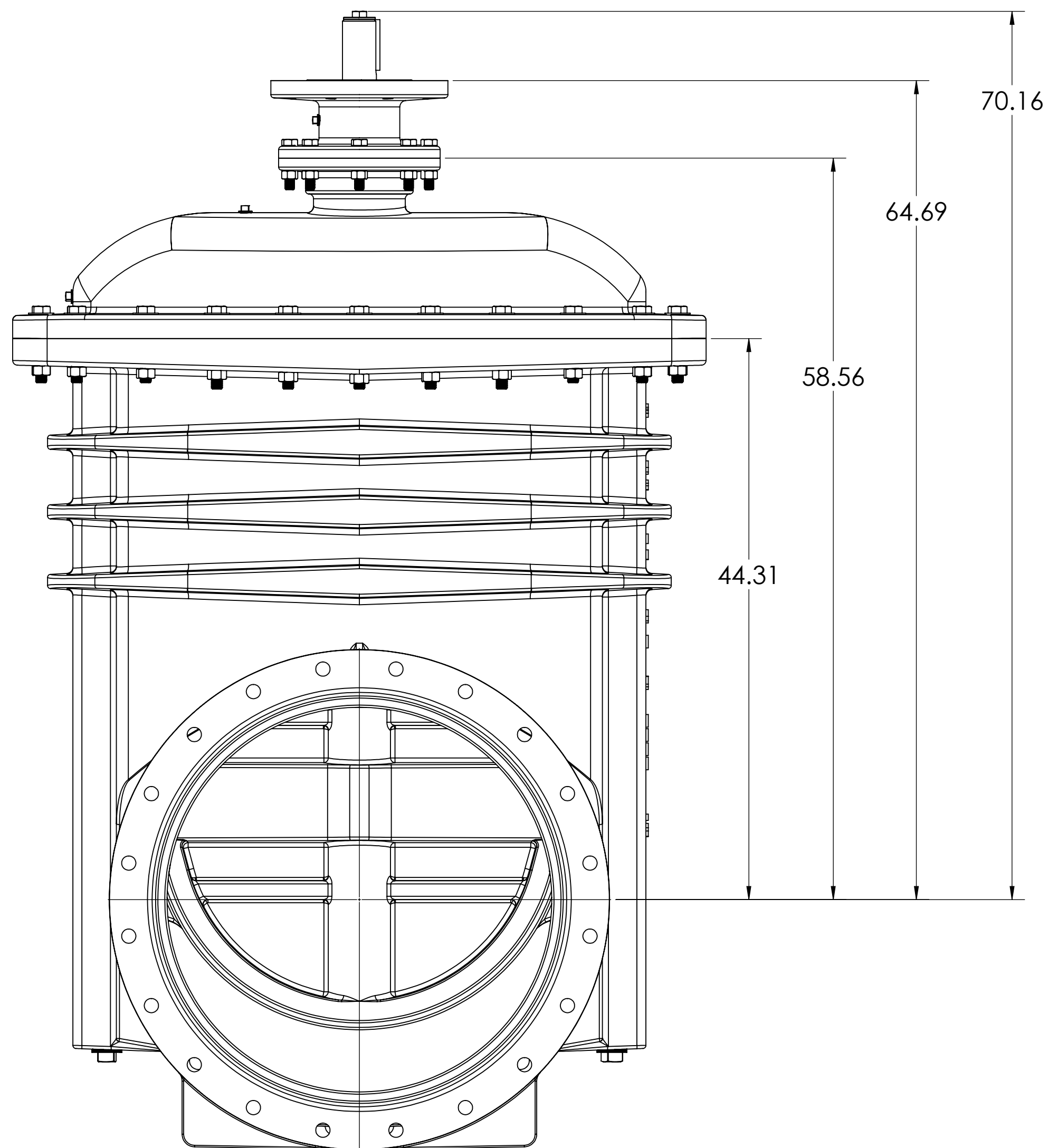
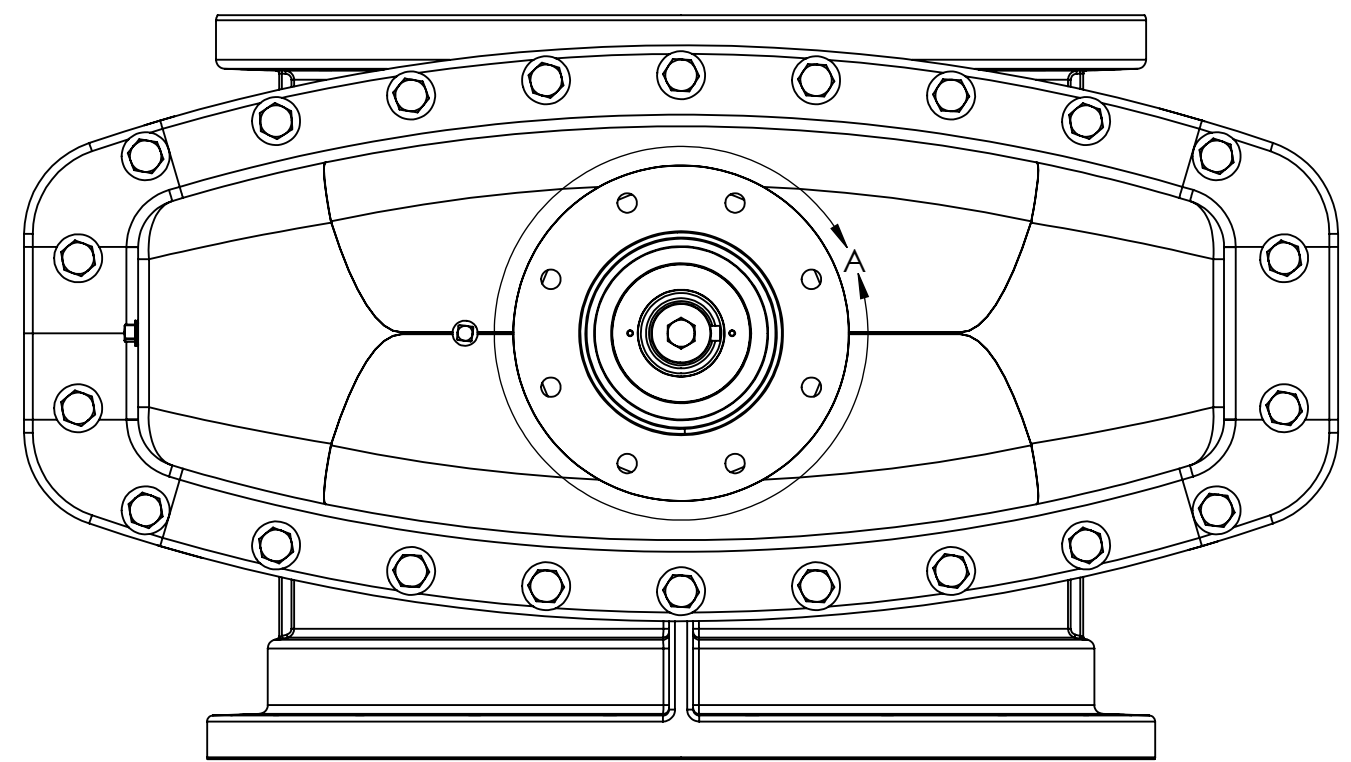
SIDE BYPASS



SPUR GEAR WITH OPTIONAL SIDE BYPASS



THIRD ANGLE PROJECTION STANDARDS: ANSI/ASME Y14.1, Y14.2, Y14.3, Y14.4, Y14.5, Y14.6, Y14.7, Y14.8, Y14.9, Y14.10, Y14.11, Y14.12, Y14.13, Y14.14, Y14.15, Y14.16, Y14.17, Y14.18, Y14.19, Y14.20, Y14.21, Y14.22, Y14.23, Y14.24, Y14.25, Y14.26, Y14.27, Y14.28, Y14.29, Y14.30, Y14.31, Y14.32, Y14.33, Y14.34, Y14.35, Y14.36, Y14.37, Y14.38, Y14.39, Y14.40, Y14.41, Y14.42, Y14.43, Y14.44, Y14.45, Y14.46, Y14.47, Y14.48, Y14.49, Y14.50, Y14.51, Y14.52, Y14.53, Y14.54, Y14.55, Y14.56, Y14.57, Y14.58, Y14.59, Y14.60, Y14.61, Y14.62, Y14.63, Y14.64, Y14.65, Y14.66, Y14.67, Y14.68, Y14.69, Y14.70, Y14.71, Y14.72, Y14.73, Y14.74, Y14.75, Y14.76, Y14.77, Y14.78, Y14.79, Y14.80, Y14.81, Y14.82, Y14.83, Y14.84, Y14.85, Y14.86, Y14.87, Y14.88, Y14.89, Y14.90, Y14.91, Y14.92, Y14.93, Y14.94, Y14.95, Y14.96, Y14.97, Y14.98, Y14.99, Y14.100		PROPERTY OF MCWANE CORPORATION. ALL DIMENSIONS AND IDENTIFICATION ARE PROPRIETARY TO MCWANE CORPORATION AND ITS SUBSIDIARIES. TOLERANCES UNLESS OTHERWISE SPECIFIED: OTHERWISE ARRANGED: ALL RIGHTS RESERVED.		DATE: 11/14/18	DESIGNED BY: B
CASTING TOLERANCES: 4-6": ± 0.005 6-8": ± 0.004 8-12": ± 0.003 12-18": ± 0.002 18-24": ± 0.001 MIN RADIUS: 1/8" FINISH: Z		MACHINED DIMENSIONS: DECIMALS: ± 0.005 FRACTIONS: ± 1/16" ANGLE: 4° SURFACE FINISH: 125 μin RA: 1/8"		MATERIAL: 304 STAINLESS STEEL	
ESTIMATED WEIGHT: 18.5 LBS.		DESCRIPTION: 30" NRS RESILIENT SEATED GATE VALVE		SHEET NO: 3	
DRAWN BY: J. L. KAMM		CHECKED BY: J. L. KAMM		SCALE: 1:8	
DATE: 11/14/18		SHEET NO: 3		SHEET OF: 6	

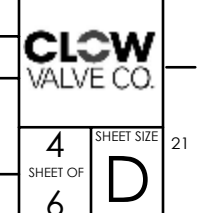


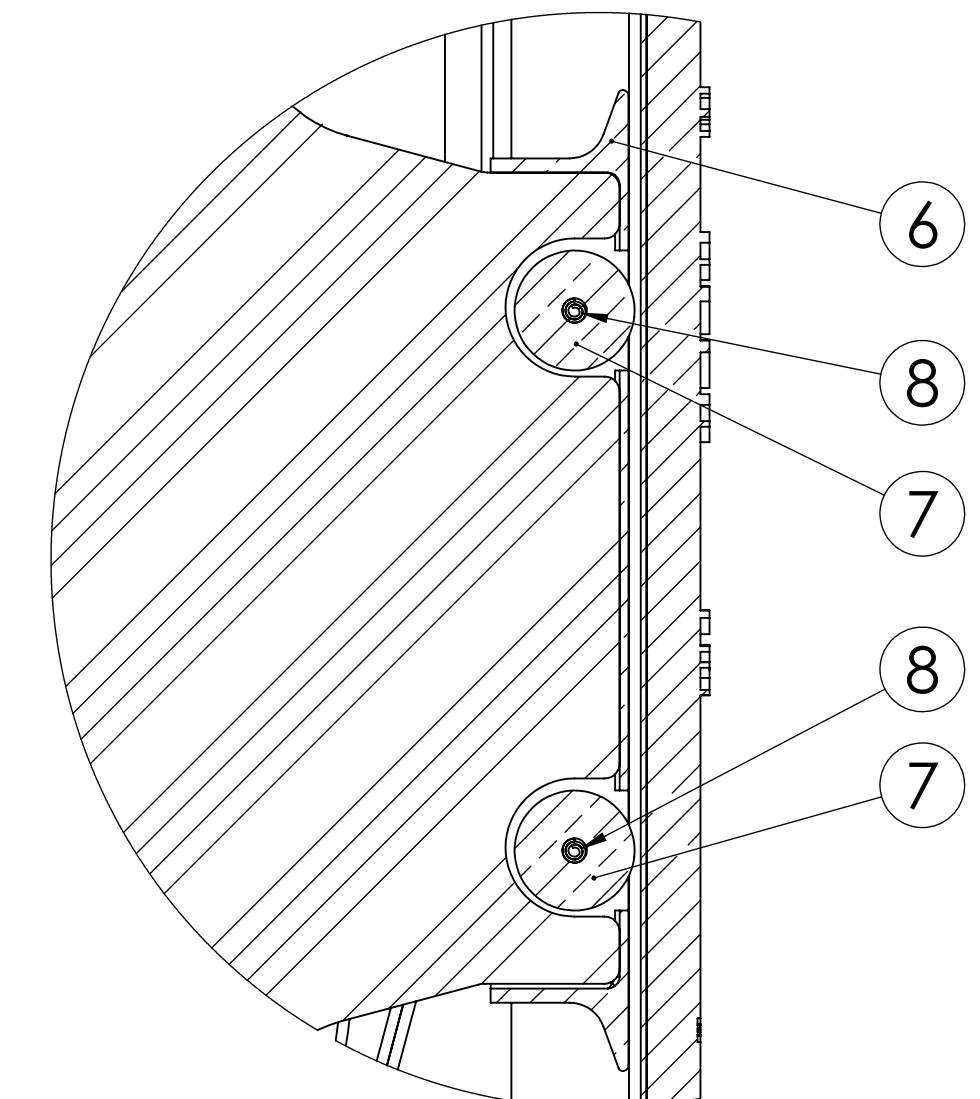
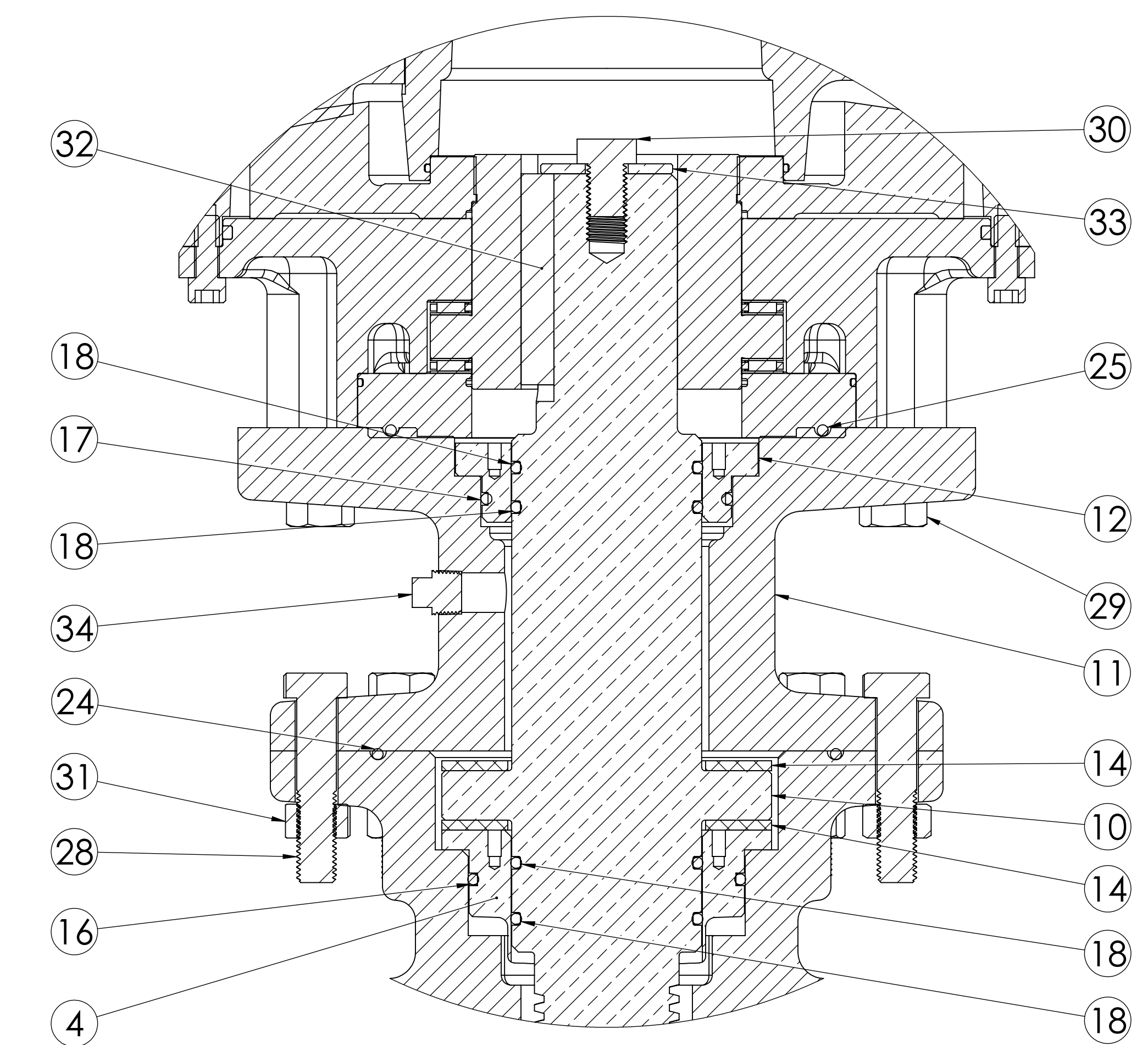
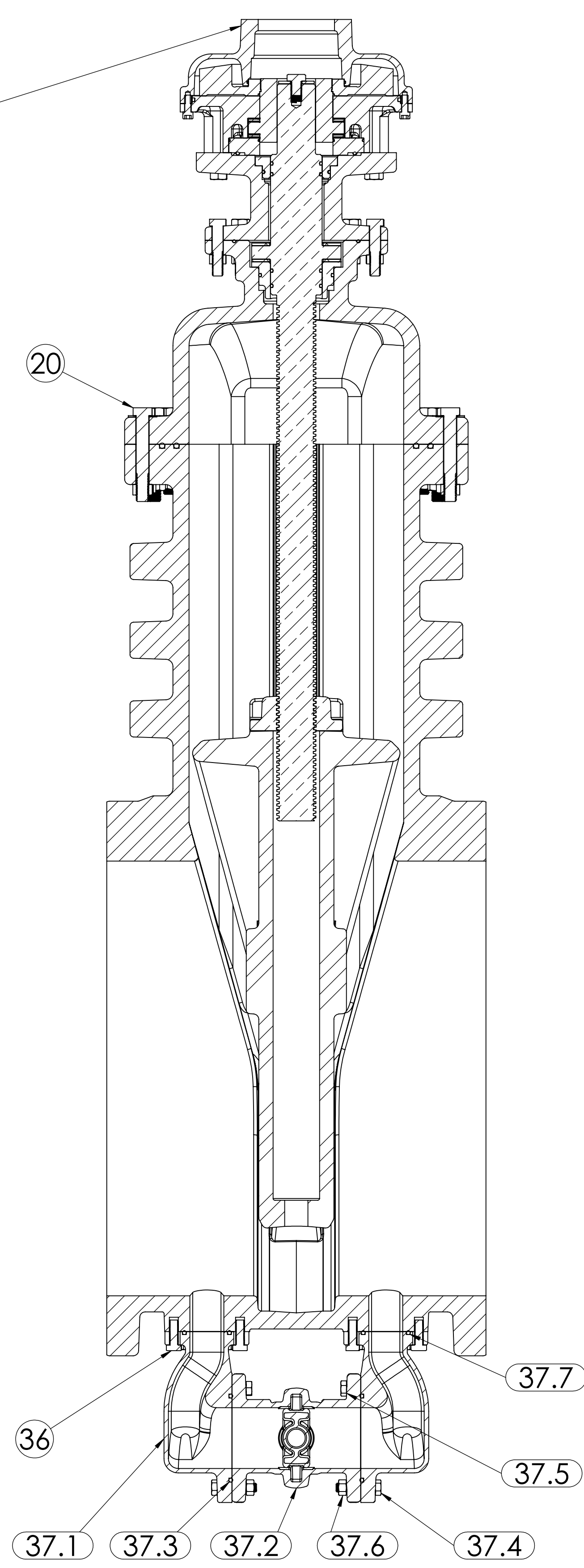
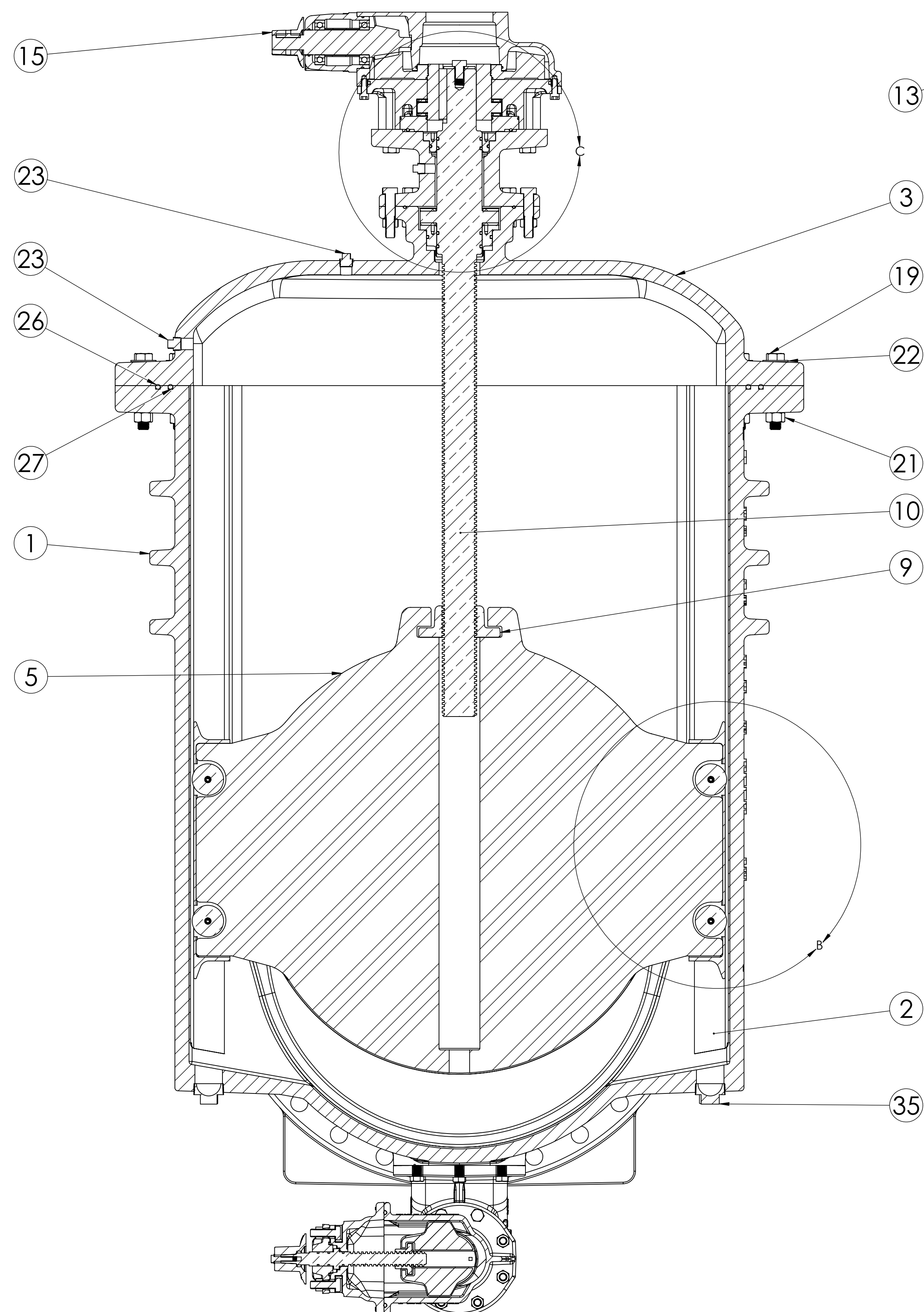
STANDARD FA30
MOUNTING

8 X Ø .81
ON Ø 11.75 B.C.

BARE STEM MOUNTING FLG

STANDARDS: ANSI/ASME B16.10, B16.41 AND B16.47 TOLERANCES AS FOLLOWS UNLESS OTHERWISE SPECIFIED.		PROPERTY OF MCWANE CORPORATION. ALL RIGHTS AND DESIGN INFORMATION ARE PROPRIETARY TO MCWANE CORPORATION AND ITS SUBSIDIARIES. REPRODUCTION OR USE WITHOUT PERMISSION OF MCWANE CORPORATION IS PROHIBITED UNDER OTHERWISE ARRANGED. ALL RIGHTS RESERVED.		REV. BY:	DATE/REV.:	CHK. BY:	CHK. DATE:	DESCRIPTION:	30" NRS RESILIENT SEATED GATE VALVE	DRAWN BY:	DATE/REV.:	CHK. BY:	CHK. DATE:	SCALE:	1:8	SHEET NO.:	4	TOTAL SHEETS:	6	SOFTWARE:	Solidworks 2018 SP2
CASTING TOLERANCES:		MACHINED DIMENSIONS:		MATERIAL:		ESTIMATED WEIGHT:		LBS.		REV. BY:		DATE/REV.:		CHK. BY:		CHK. DATE:		SCALE:		SHEET NO.:	
6-4":	± 1/32"	DECIMALS:	± 0.005	PROPERTY OF MCWANE CORPORATION.		ESTIMATED WEIGHT:		LBS.		REV. BY:		DATE/REV.:		CHK. BY:		CHK. DATE:		SCALE:		SHEET NO.:	
6-8":	± 3/64"	FRACTIONS:	± 1/64"	ALL RIGHTS AND DESIGN INFORMATION ARE PROPRIETARY TO		ESTIMATED WEIGHT:		LBS.		REV. BY:		DATE/REV.:		CHK. BY:		CHK. DATE:		SCALE:		SHEET NO.:	
8-12":	± 1/16"	ANGLE:	± 1°	MCWANE CORPORATION AND ITS SUBSIDIARIES.		ESTIMATED WEIGHT:		LBS.		REV. BY:		DATE/REV.:		CHK. BY:		CHK. DATE:		SCALE:		SHEET NO.:	
12-18":	± 3/32"	SURFACE FINISH:	100 μin	REPRODUCTION OR USE WITHOUT PERMISSION OF		ESTIMATED WEIGHT:		LBS.		REV. BY:		DATE/REV.:		CHK. BY:		CHK. DATE:		SCALE:		SHEET NO.:	
18-24":	± 1/8"	RADI:	1/8"	OTHERWISE ARRANGED. ALL RIGHTS RESERVED.		ESTIMATED WEIGHT:		LBS.		REV. BY:		DATE/REV.:		CHK. BY:		CHK. DATE:		SCALE:		SHEET NO.:	
MIN RADIUS:	1/8"					ESTIMATED WEIGHT:		LBS.		REV. BY:		DATE/REV.:		CHK. BY:		CHK. DATE:		SCALE:		SHEET NO.:	
MIN DRAFT:	2°					ESTIMATED WEIGHT:		LBS.		REV. BY:		DATE/REV.:		CHK. BY:		CHK. DATE:		SCALE:		SHEET NO.:	





THIRD ANGLE PROJECTION. STANDARDS: ANSI/ASME Y14.1, Y14.2, AND Y14.4. TOLERANCES: AS FOLLOWS UNLESS OTHERWISE SPECIFIED.		PROPERTY OF MCWANE CORPORATION. ALL DIMENSIONS AND IDENTIFIER DESIGNATIONS ARE PROPRIETARY TO MCWANE CORPORATION AND ITS SUBSIDIARIES. TOLERANCES ARE REQUIRED UPON COMPLETION OF DRAWING UNLESS OTHERWISE ARRANGED. ALL RIGHTS RESERVED.		DATE: _____	DESIGNED BY: _____
CASTING TOLERANCES:		MACHINED DIMENSIONS:		MATERIAL: _____	
1/4":	± 0.005	DECIMALS:	± 0.005	ESTIMATED WEIGHT: _____	
1/2":	± 0.005	FRACTIONS:	± 0.005	DESCRIPTION: 30" NRS RESILIENT SEATED GATE VALVE	
3/4":	± 0.005	ANGLES:	± 1°	LBS.	
1":	± 0.005	SURFACE FINISH:	125 μin	DRAWN BY: _____	
1 1/2":	± 0.005	RADIUS:	1/8"	CHECKED BY: _____	
2":	± 0.005	MIN RADIUS:	1/8"	DATE: _____	
MIN RADIUS:	1/8"	MIN DRAFT:	2°	SCALE: 1:6	
				SHEET NO: 5	
				SHEET OF: 6	
				SOLIDWORKS: Solidworks 2018 SP2	

CLW
VALVE CO.
5
D

