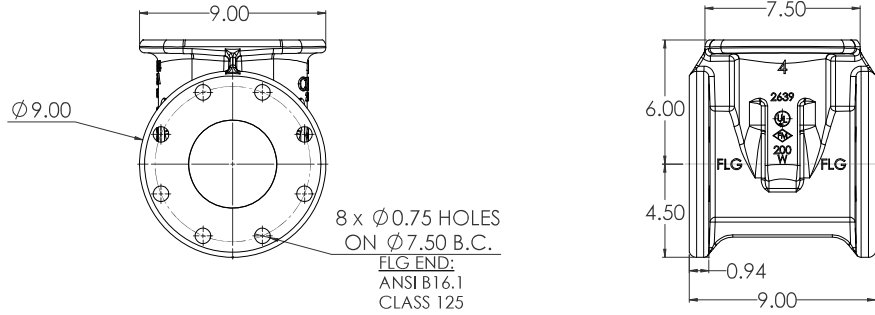
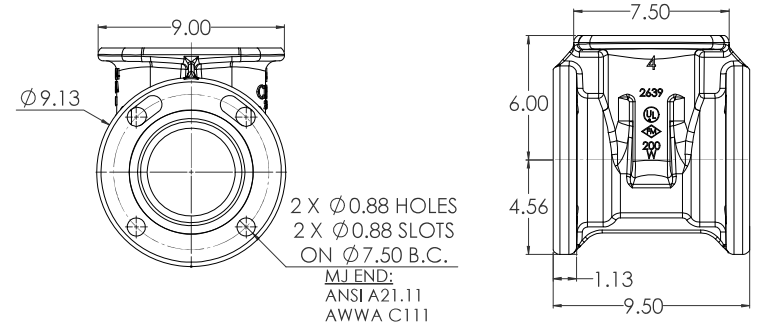


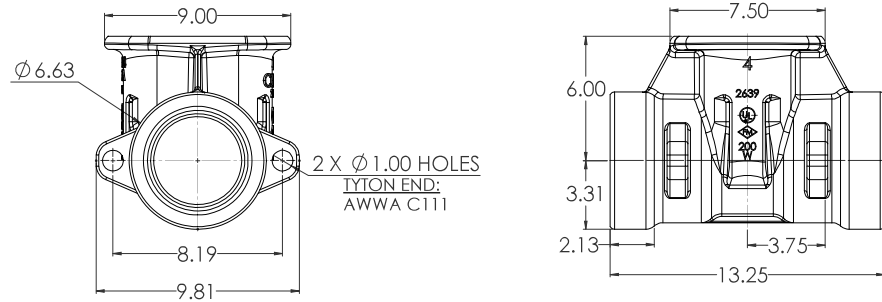
04" C509 FLG X FLG



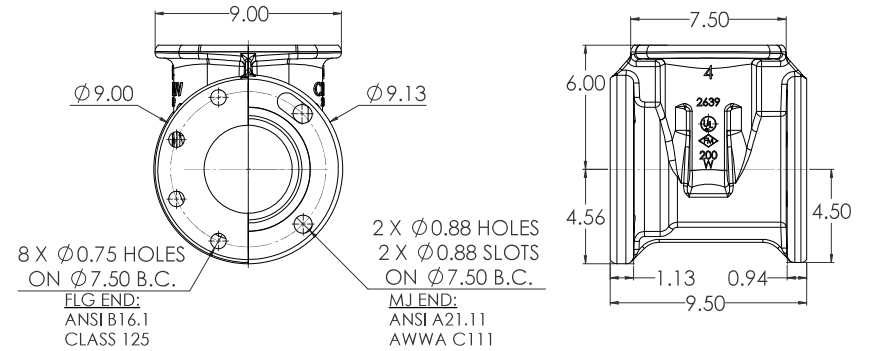
04" C509 MJ X MJ



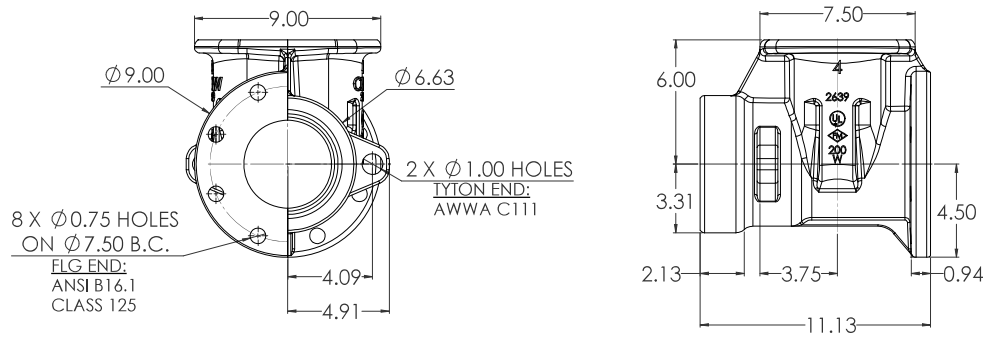
04" C509 TYTON X TYTON



04" C509 FLG X MJ

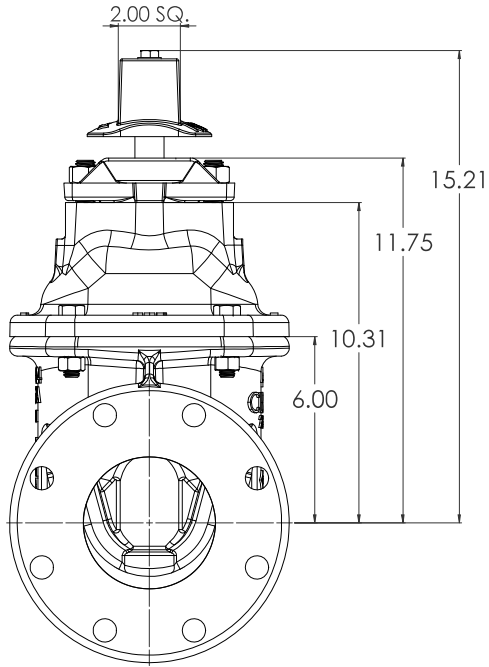


04" C509 FLG X TYTON

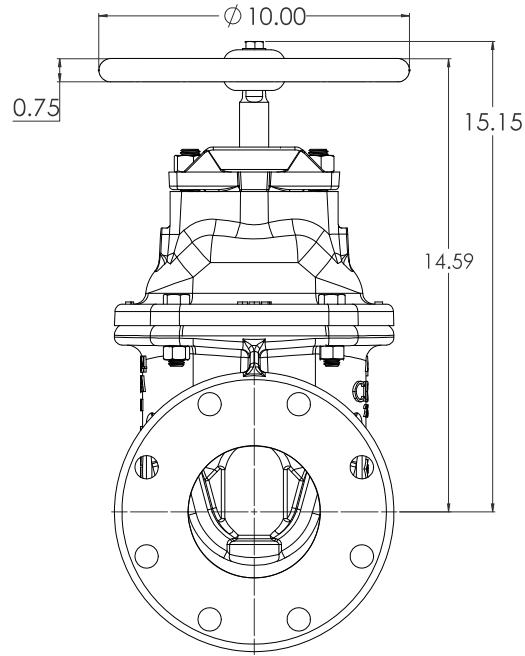


COMPANY: WORLDWIDE VALVE MANUFACTURING ADDRESS: 10000 W. 120th St., Overland Park, KS 66213 PHONE: (913) 666-1100 FAX: (913) 666-1101 WWW: WWW.WORLDWIDEVALVE.COM		DIVISION: VALVE DIVISION PRODUCT: WEDGE GATE VALVE MODEL: 04" C509 NRS RESILIENT		PART NO.: 04" C509 NRS RESILIENT LBS. WEDGE GATE VALVE DATE: 12/1/2020 DRAWN BY: CW CHECKED BY: 12/1/2020 SCALE: 1:3 SHEET NO.: 5	
MATERIALS: CAST IRON GATE: WEDGE GATE END USE: INDUSTRIAL END USER: INDUSTRIAL END USER: INDUSTRIAL END USER: INDUSTRIAL		END USER: INDUSTRIAL END USER: INDUSTRIAL END USER: INDUSTRIAL END USER: INDUSTRIAL			

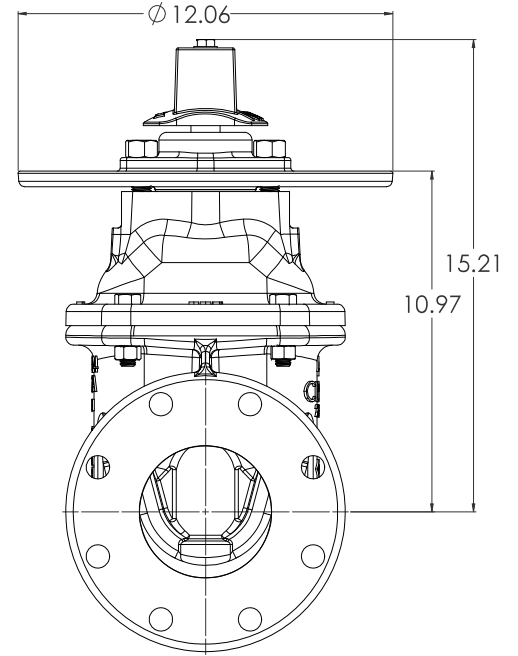
**O-RING PLATE WITH
OPERATING NUT**



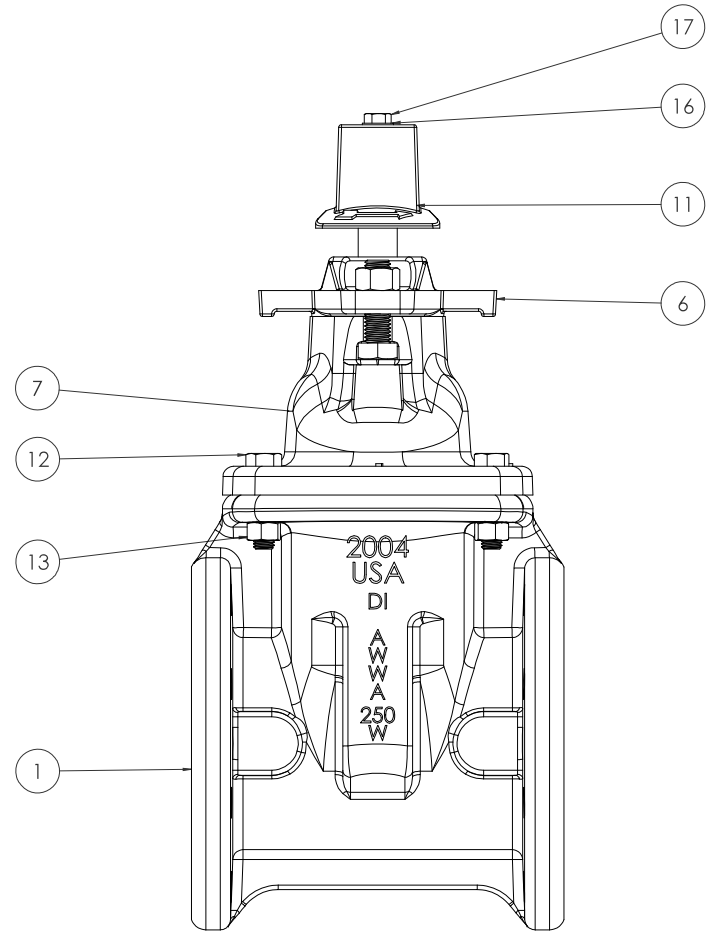
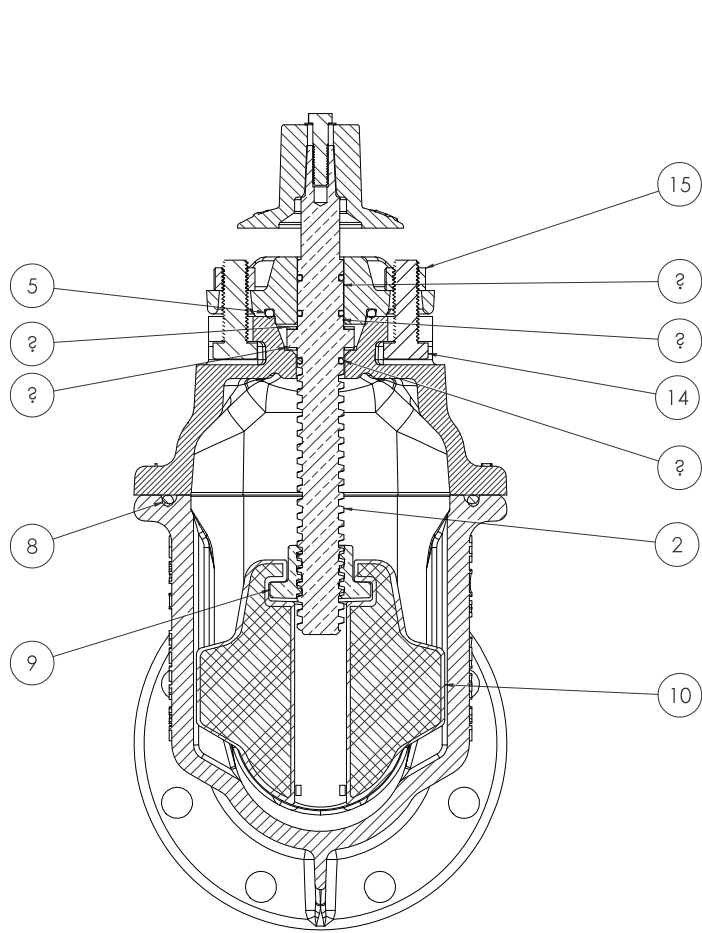
**O-RING PLATE WITH
HANDWHEEL**



**INDICATOR POST PLATE
WITH OPERATING NUT**



MANUFACTURER'S INFORMATION COMPANY: SOLEWORKS ADDRESS: 1221/1220D PHONE: 1-800-368-7777 FAX: 1-800-368-7777 E-MAIL: SALES@SOLEWORKS.COM WEBSITE: WWW.SOLEWORKS.COM		PRODUCT INFORMATION PART NUMBER: Q4-C509-NRS DESCRIPTION: Q4" C509 NRS RESILIENT LBS. WEDGE GATE VALVE MATERIAL: 1:5 DATE: 12/1/2009		REVISIONS NO. 1: 2 DATE: 12/1/2009 BY: 1 REASON: 5		APPROVALS DESIGNER: D CHECKER: 5 APPROVER: 2	
---	--	---	--	---	--	---	--



COMPANY: AWWA ADDRESS: 1201/2020 CITY: CHICAGO, IL 60607 PHONE: 773/399-1000 FAX: 773/399-1001 WWW: WWW.AWWA.ORG		PROJECT: 04" C509 NRS RESILIENT WEDGE GATE VALVE DRAWING NO: 1201/2020 DATE: 1/15/2009 SCALE: 1:5 SHEET NO: 5		
---	--	---	--	--

<u>ITEM NO.</u>	<u>COMPONENT</u>	<u>QTY.</u>	<u>SIZE</u>	<u>STANDARD MATERIAL</u>	<u>MATERIAL OPTIONS</u>
1	BODY	1	-	CAST IRON	DUCTILE IRON
2	STEM	1	-	C86200	C99500 (LOW ZINC), 304 SS, 316 SS
3	THRUST WASHER	2	-	ACETAL	C26000
4	O-RING	3	#212	EPDM	BUNA-N
5	O-RING	1	#331	EPDM	BUNA-N
6	O-RING PLATE	1	-	DUCTILE IRON	**INDICATOR POST PLATE**
7	COVER	1	-	CAST IRON	DUCTILE IRON
8	O-RING	1	#437	EPDM	BUNA-N
9	STEM NUT	1	-	C87850	C87610 (LOW ZINC)
10	WEDGE	1	-	EPDM/DUCTILE IRON	-
11	OPERATING NUT	1	-	CAST IRON	DUCTILE IRON, C86700, **10" DIA. HANDWHEEL**
12	HEX HEAD CAP SCREW	4	1/2"-13 X 2"	18-8 SS	316 SS
13	HEX NUT	4	1/2"-13	18-8 SS	316 SS
14	HEX HEAD CAP SCREW	2	5/8"-11 X 2"	18-8 SS	316 SS
15	HEX NUT	2	5/8"-11	18-8 SS	316 SS
16	WASHER	1	3/8"	18-8 SS	316 SS
17	HEX HEAD CAP SCREW	1	3/8"-16 X 1 1/2"	18-8 SS	316 SS

- VALVES CONFORM WITH THE FOLLOWING STANDARDS
 - AWWA C509
 - NSF 61
- LOW ZINC BRASS STEM AND STEM NUT AVAILABLE
- 100% DOMESTIC FASTENERS AND ORINGS OPTIONS AVAILABLE
- *OPEN LEFT* (COUNTERCLOCKWISE) AND *OPEN RIGHT* (CLOCKWISE) OPTIONS AVAILABLE
- TURNS TO OPEN FROM FULLY CLOSED: 12
- AWWA MAXIMUM ALLOWABLE TORQUE TO CLOSE 75 FT-LBS
- OPTIONAL HANDWHEEL CAN BE SUBSTITUTED FOR STANDARD 2" SQUARE OP NUTS.
 - **NOTE: STANDARD HANDWHEELS SIZE CALLED OUT IN PARTS LIST.**

<small> COMPANY: SWISS VALVE ADDRESS: 10000 SWISS VALVE RD, WILSONVILLE, OR 97148 PHONE: 503.535.3333 FAX: 503.535.3334 WWW: WWW.SWISSVALVE.COM </small>		<small> PRODUCT: 04" C509 NRS RESILIENT LBS. WEDGE GATE VALVE PART NO: 1291/2020 REV: 1 DATE: 12/1/2020 </small>		<small> SHEET NO: 4 TOTAL SHEETS: 5 </small>	
---	--	---	--	---	---