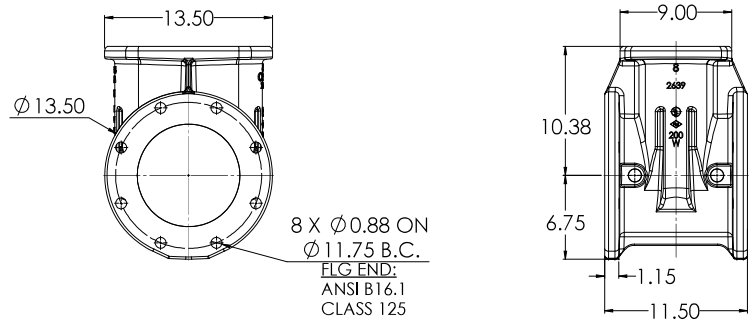
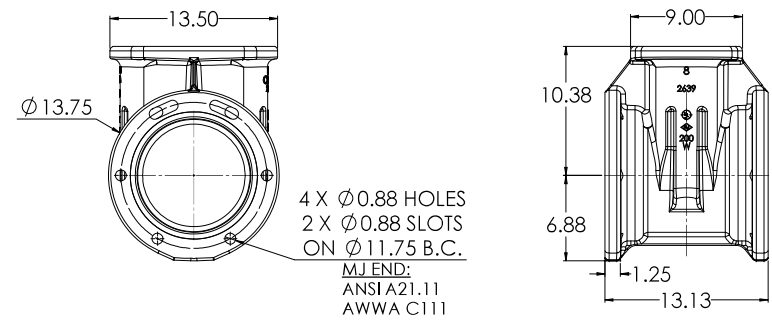


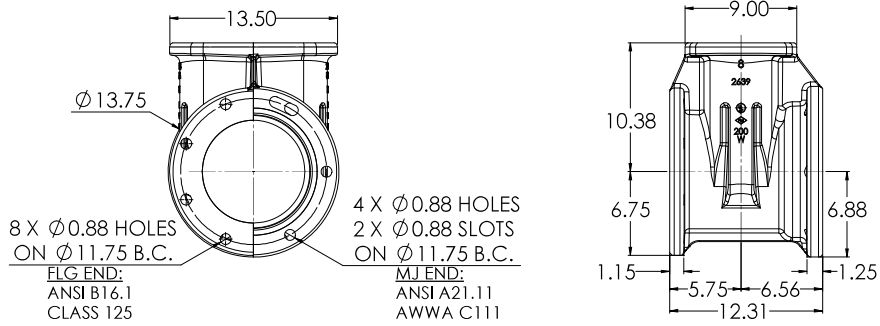
08" C509 FLG X FLG



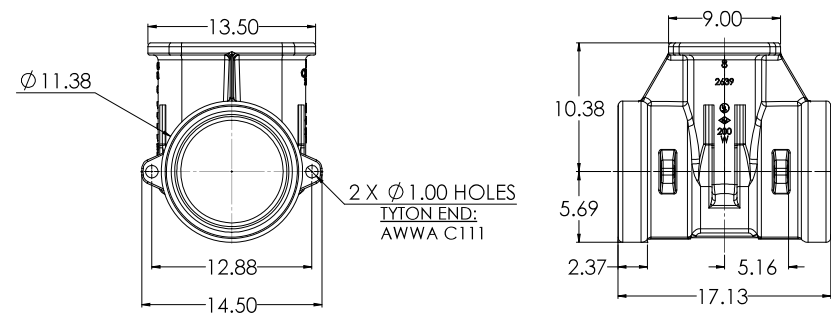
08" C509 MJ X MJ



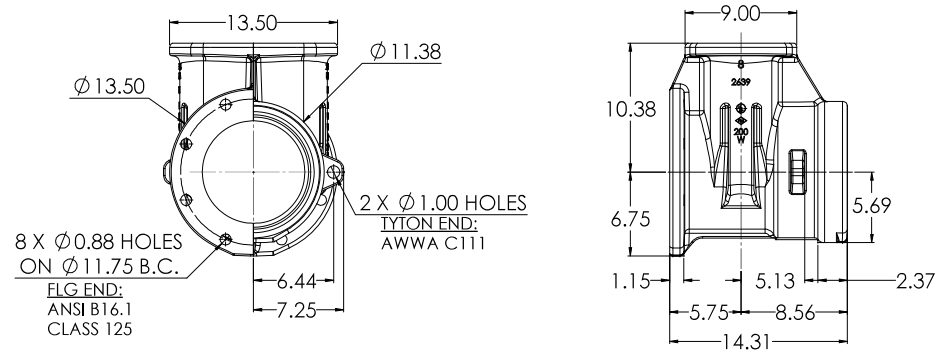
08" C509 FLG X MJ



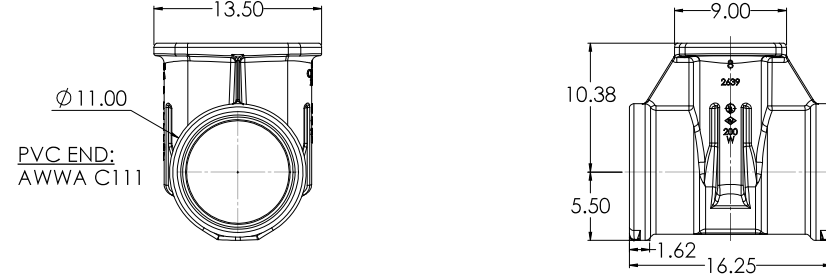
08" C509 TYTON X TYTON



08" C509 FLG X TYTON

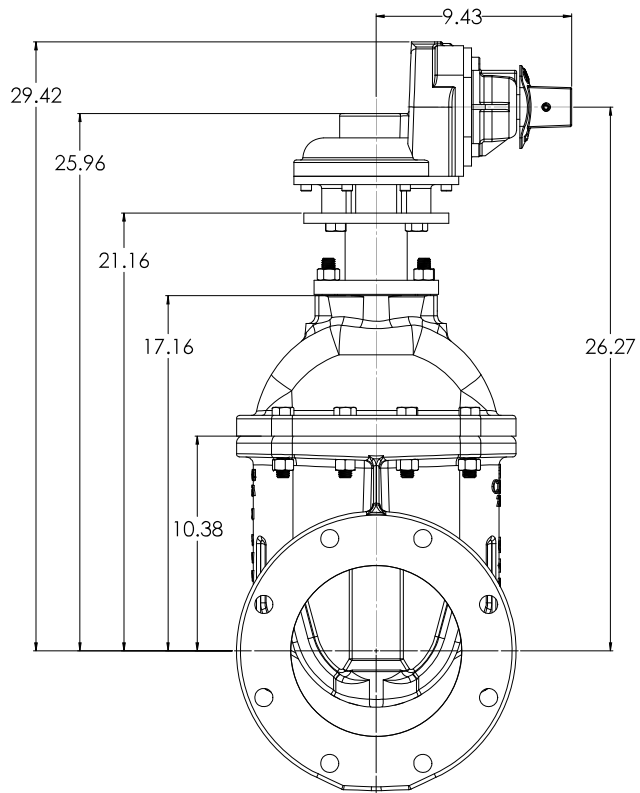


08" C509 PVC X PVC

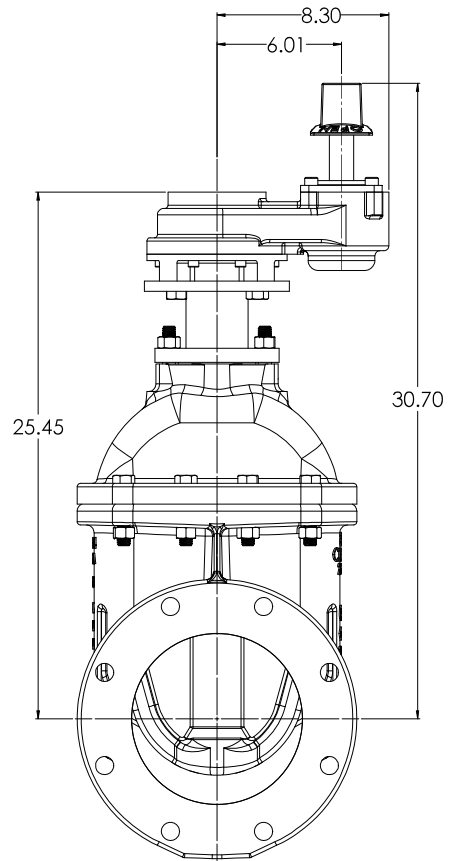


COMPANY: SWISS VALVE ADDRESS: 1100 W. 10th St., Suite 100 Des Moines, IA 50319 PHONE: 515.281.1111 FAX: 515.281.1112 WWW: www.swissvalve.com	PRODUCT: 08" C509 NRS GEARED RESILIENT WEDGE GATE VALVE LBS.	SCALE: 1:5 SHEET: 7 DATE: 12/22/2020 DRAWN BY: SPZ CHECKED BY: SPZ APPROVED BY: SPZ	PROJECT: SWISS VALVE 2016 SPZ SHEET: 7 DATE: 12/22/2020 DRAWN BY: SPZ CHECKED BY: SPZ APPROVED BY: SPZ
--	--	--	---

**BEVEL GEAR WITH
OPERATING NUT**

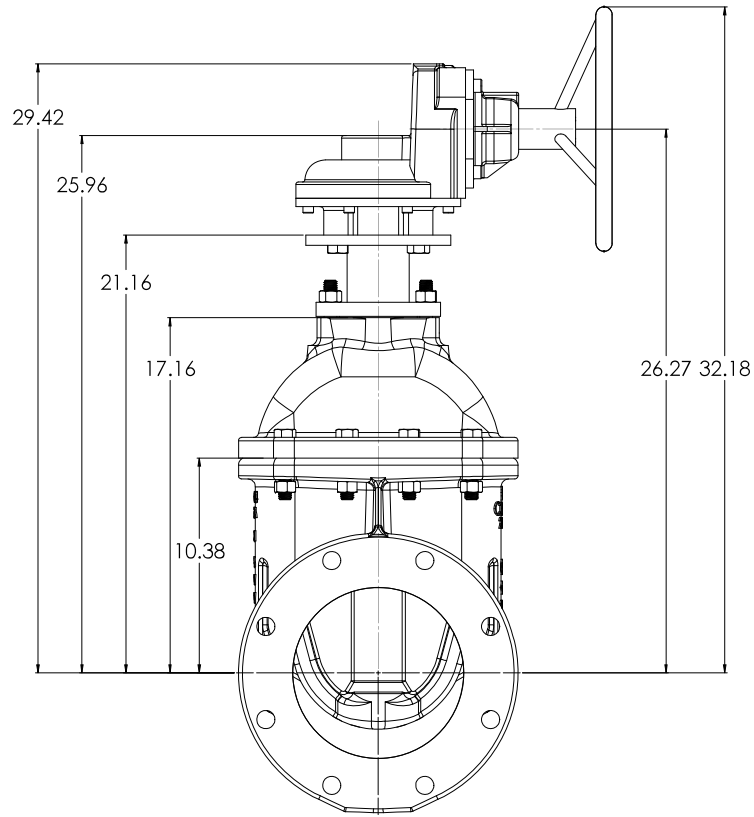


**SPUR GEAR WITH
OPERATING NUT**

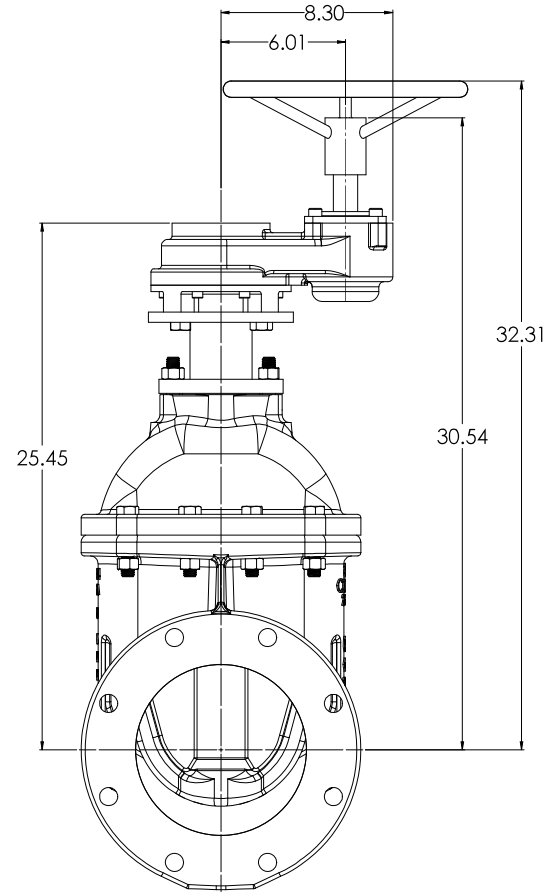


COMPANY: SOLO WORKS ADDRESS: 12200 W. 12TH AVE., SUITE 100 DENVER, CO 80202		PHONE: (303) 440-1100 FAX: (303) 440-1101 WWW: www.soloworks.com		PART NO.: 08" C509 NRS GEARED RESILIENT WEDGE GATE VALVE WEIGHT: LBS. MATERIAL: 1:5		DATE: 12/29/2006 DRAWN BY: CW CHECKED BY: 12/29/2006 SCALE: 1:5 SHEET NO.: 7 TOTAL SHEETS: 7		ISO 9001:2000 CERTIFIED REG. NO. 13107 REV. 01		ISO 9001:2000 CERTIFIED REG. NO. 13107 REV. 01		ISO 9001:2000 CERTIFIED REG. NO. 13107 REV. 01		ISO 9001:2000 CERTIFIED REG. NO. 13107 REV. 01	
--	--	--	--	--	--	---	--	--	--	--	--	--	--	--	--

**BEVEL GEAR WITH
HANDWHEEL**

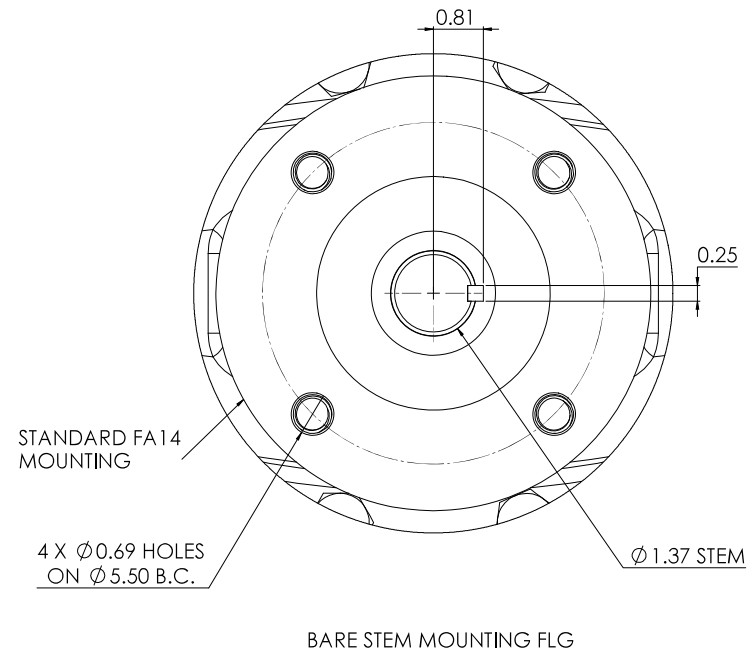
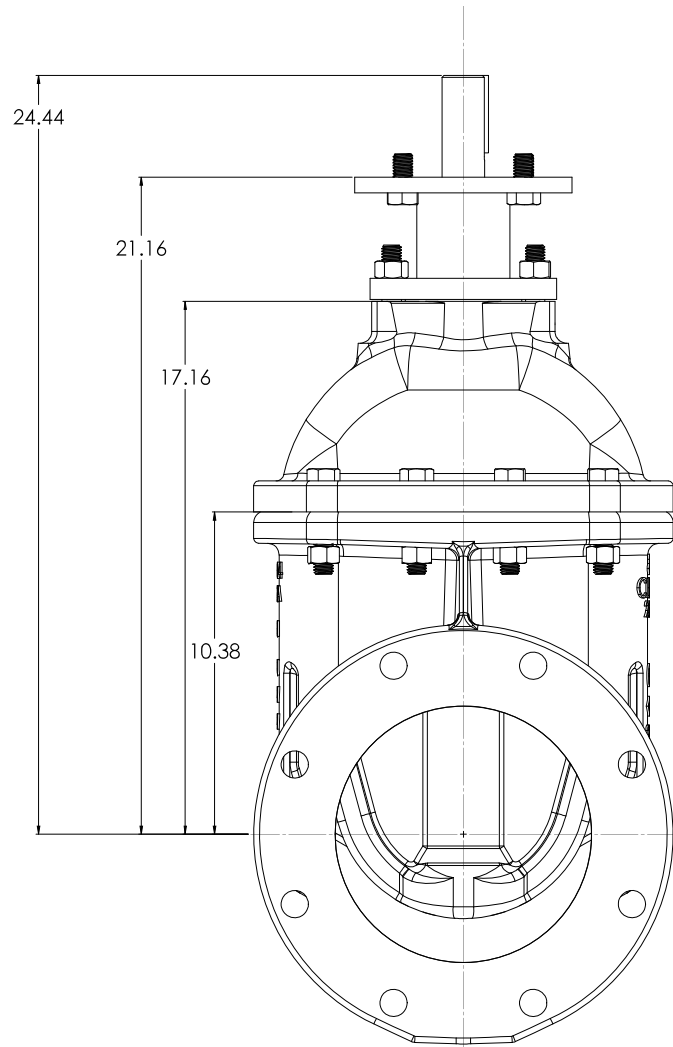


**SPUR GEAR WITH
HANDWHEEL**

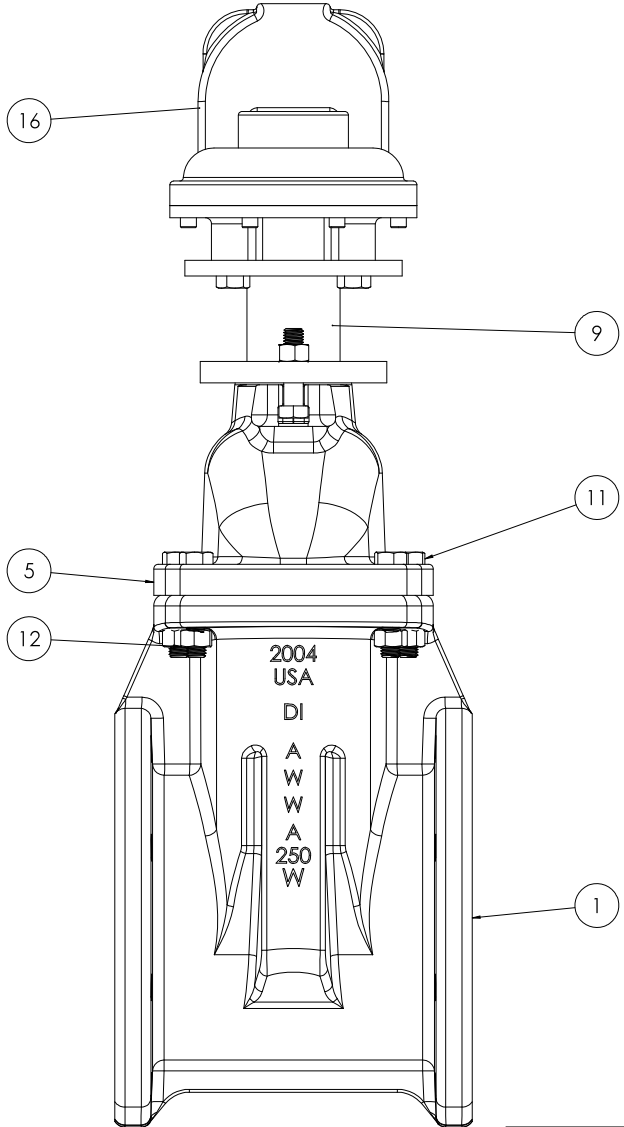
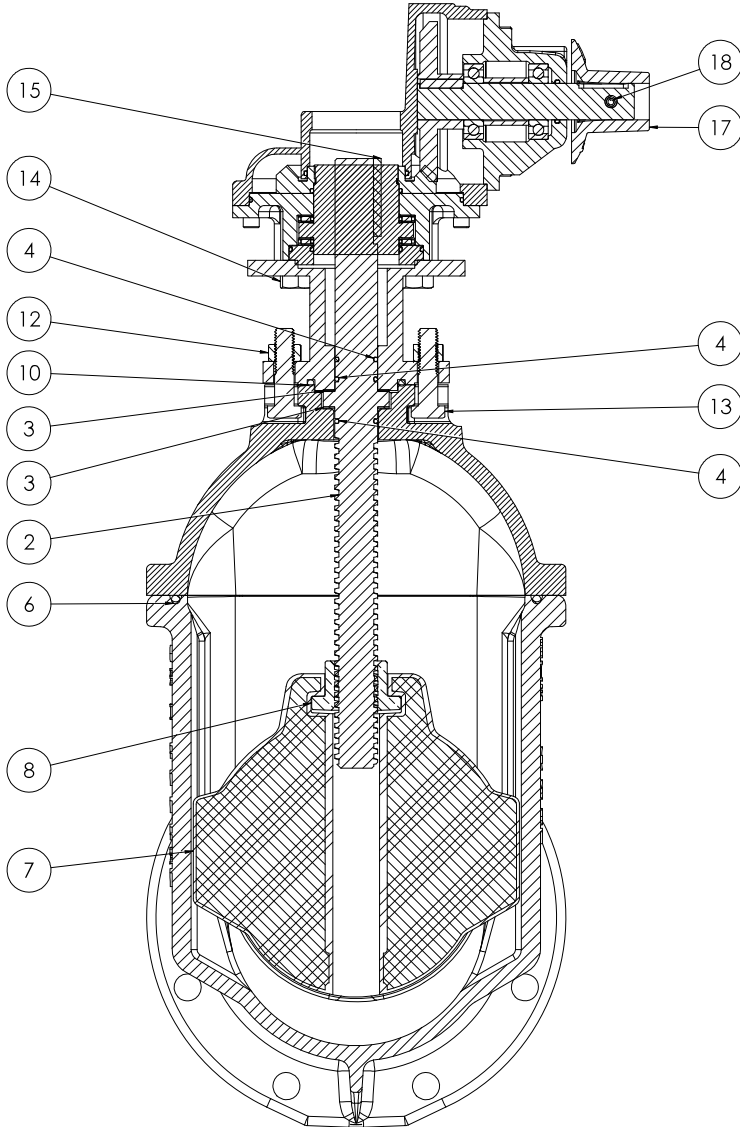


COMPANY: SOLO WORKS ADDRESS: 1222 29th St, Suite 100, San Francisco, CA 94132 PHONE: (415) 435-1100 FAX: (415) 435-1101 WWW: www.soloworks.com		PROJECT: 08" C509 NRS GEARED RESILIENT WEDGE GATE VALVE LBS: 1:5 DATE: 12/2/2020		SHEET: 3 TOTAL: 7	
DRAWN BY: AW CHECKED BY: AW DATE: 12/2/2020	APPROVED BY: AW DATE: 12/2/2020	PART NUMBER: 08" C509 NRS GEARED RESILIENT WEDGE GATE VALVE	SCALE: 1:5	MATERIAL: CAST IRON	WEIGHT: 150

BARE STEM



REVISED 08" C509 NRS GEARED RESILIENT WEDGE GATE VALVE		15/2/2020 CW		1:5 7		
DATE: 15/2/2020 BY: CW CHECKED: 15/2/2020 BY: [blank]	DATE: 15/2/2020 BY: CW CHECKED: 15/2/2020 BY: [blank]	08" C509 NRS GEARED RESILIENT WEDGE GATE VALVE	LBS	4	7	D



COMPANY: AWWA WATERWORKS ADDRESS: 12000 W. 120th St., Omaha, NE 68144 PHONE: (402) 426-1000 FAX: (402) 426-1001 WWW: www.awwa.com		PRODUCT: 08" CS09 NRS GEARED RESILIENT LBS. WEDGE GATE VALVE MODEL: 122/2020 DATE: 12/2/2020		SHEET: 5 TOTAL: 7 DWG. NO.: 2016 SP2	
---	--	--	--	--	--

<u>ITEM NO.</u>	<u>COMPONENTS</u>	<u>QTY.</u>	<u>SIZE</u>	<u>STANDARD MATERIAL</u>	<u>MATERIAL OPTIONS</u>
1	BODY	1	-	CAST IRON	DUCTILE IRON
2	STEM	1	-	C95400 (LOW ZINC)	-
3	THRUST WASHER	2	-	ACETAL	C26000
4	O-RING	3	#216	EPDM	BUNA-N
5	COVER	1	-	CAST IRON	DUCTILE IRON
6	O-RING	1	#447	EPDM	BUNA-N
7	WEDGE	1	-	EPDM/DUCTILE IRON	-
8	STEM NUT	1	-	C87850	C99500 (LOW ZINC)
9	MOTOR MOUNT BRACKET	1	-	COLD ROLLED STEEL	-
10	O-RING	1	#335	EPDM	BUNA-N
11	HEX HEAD CAP SCREW	8	5/8"-11 X 3"	18-8 SS	316 SS
12	HEX NUT	10	5/8"-11	18-8 SS	316 SS
13	HEX HEAD CAP SCREW	2	5/8"-11 X 2 1/4"	18-8 SS	316 SS
14	HEX HEAD CAP SCREW	4	5/8"-11 X 1 1/4"	18-8 SS	316 SS
15	STEM KEY	1	1/4" X 2 1/2"	18-8 SS	316 SS
16	BEVEL GEAR	1	-	-	**SPUR GEAR**
17	OPERATING NUT	1	-	CAST IRON	DUCTILE IRON, C86700, **Ø 12" HANDWHEEL**
18	COILED SPING PIN	1	10MM X 45	302/304 SS	-

- VALVES CONFORM WITH THE FOLLOWING STANDARDS
 - AWWA C509
 - NSF 61
- LOW ZINC BRASS STEM AND STEM NUT AVAILABLE
- 100% DOMESTIC FASTENERS AND ORINGS OPTIONS AVAILABLE
- *OPEN LEFT* (COUNTERCLOCKWISE) AND *OPEN RIGHT* (CLOCKWISE) OPTIONS AVAILABLE
- TURNS TO OPEN FROM FULLY CLOSED: 26
- AWWA MAXIMUM ALLOWABLE CLOSING TORQUE 150 FT-LBS INTO GEAR
- OPTIONAL HANDWHEEL CAN BE SUBSTITUTED FOR STANDARD 2" SQUARE OP. NUTS.
 - **NOTE: STANDARD HANDWHEEL SIZE LISTED OUT IN PARTS LIST.**

WEDGE GATE VALVE <small>08" C509 NRS GEARED RESILIENT</small>		
<small>DATE:</small> 12/22/2020 <small>TIME:</small> 10:00 AM <small>BY:</small> CW	<small>PROJECT:</small> 1222/2020 <small>SCALE:</small> 1:5 <small>REV:</small> 7	<small>REV:</small> 7 <small>DATE:</small> 12/22/2020 <small>BY:</small> CW