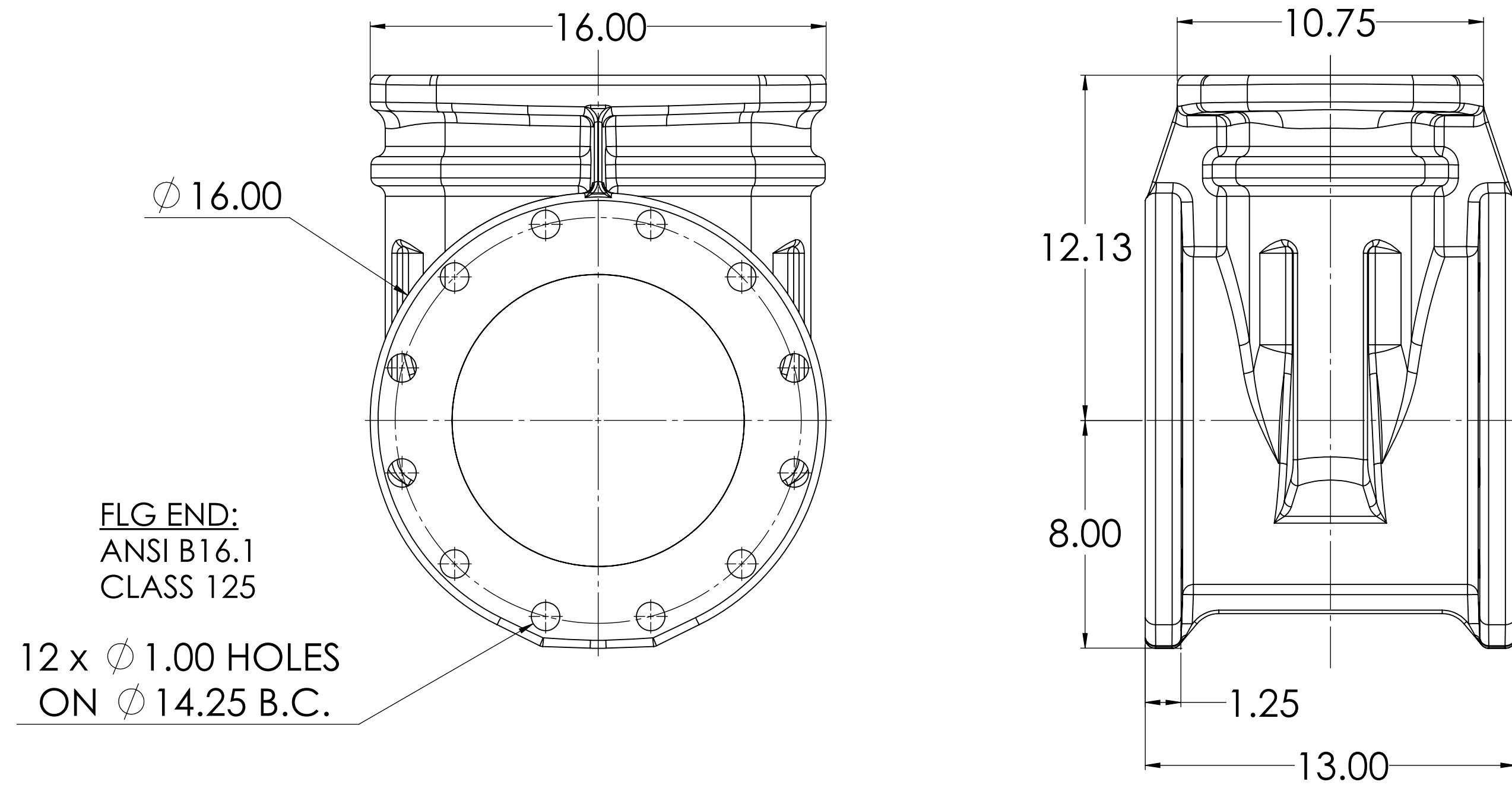
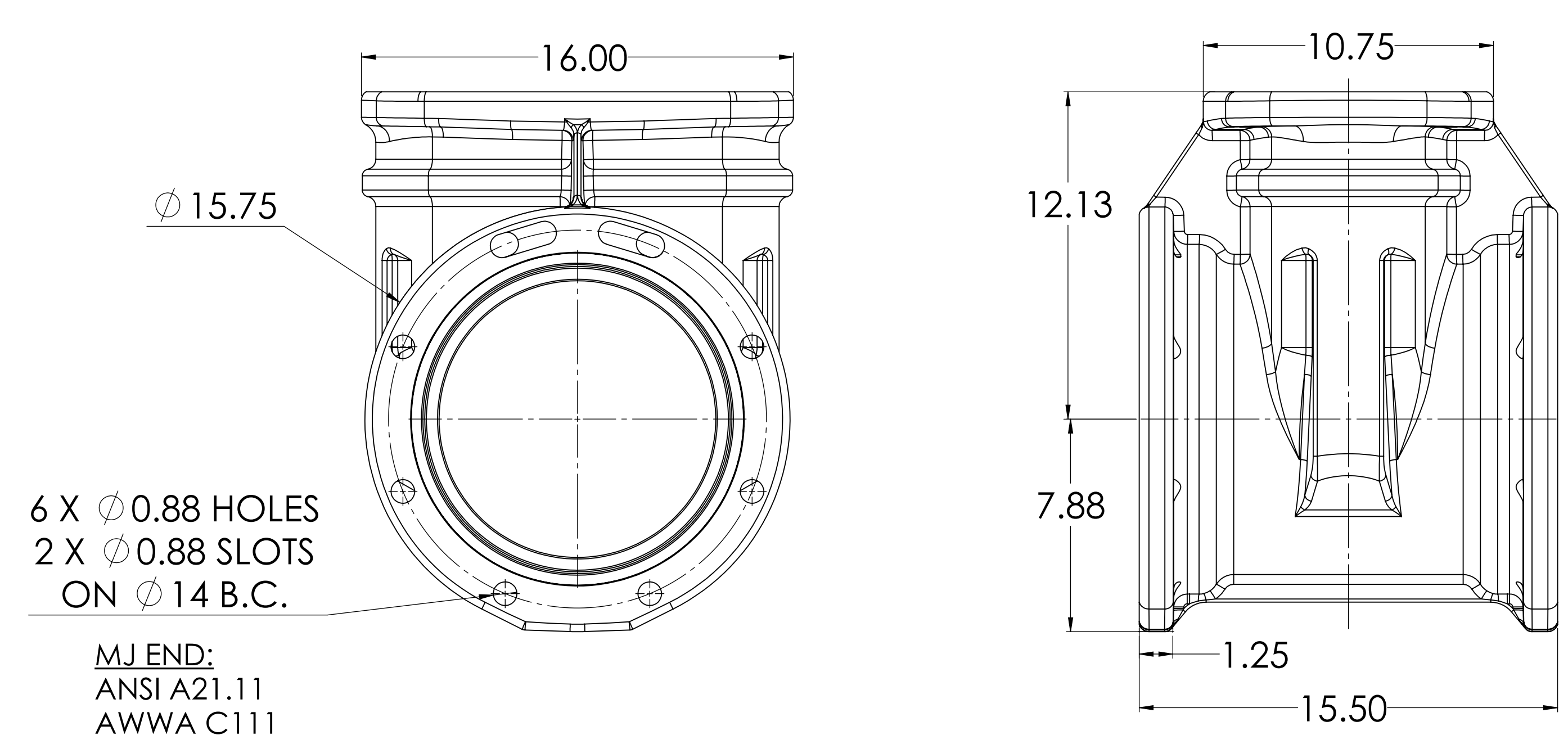


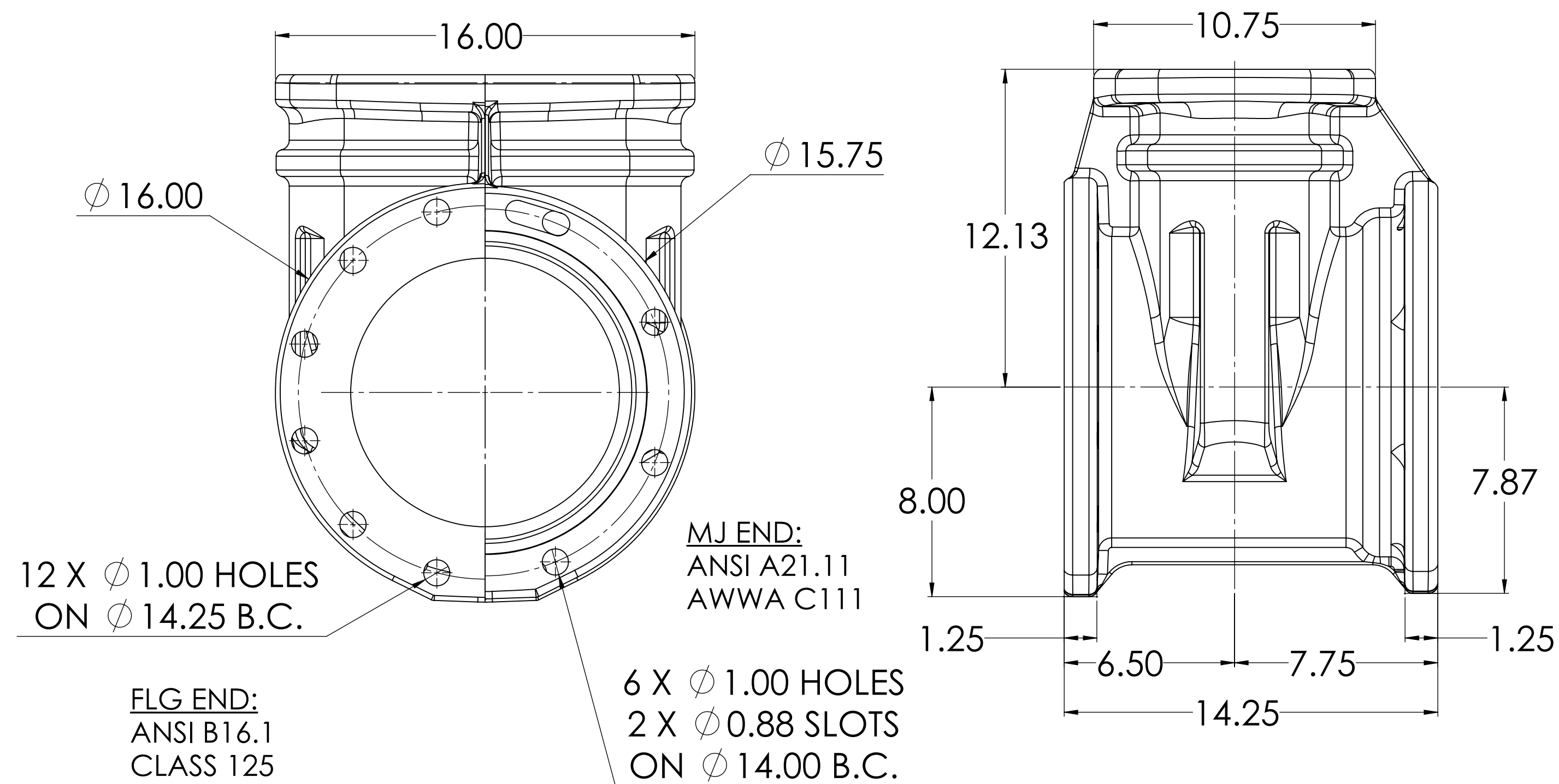
10" C509 FLG X FLG



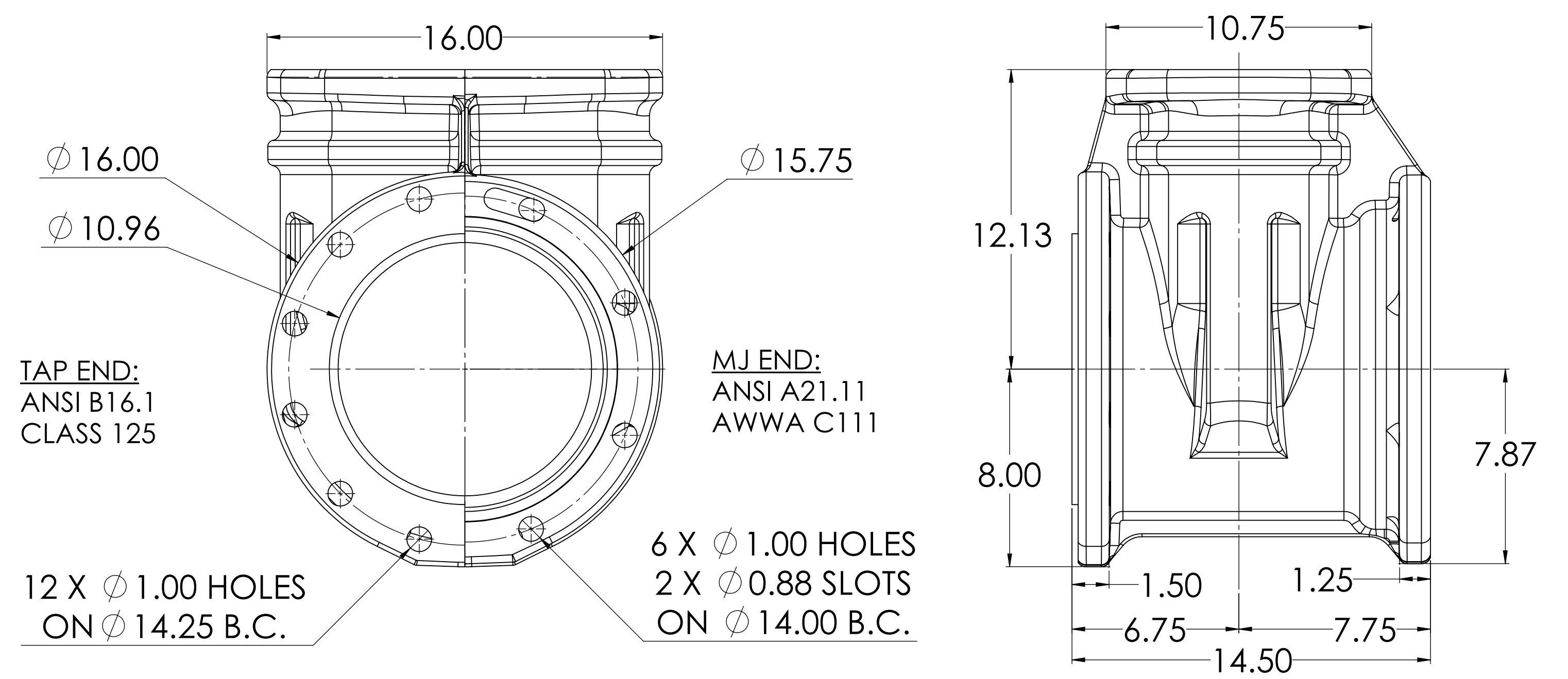
10" C509 MJ X MJ



10" C509 FLG X MJ

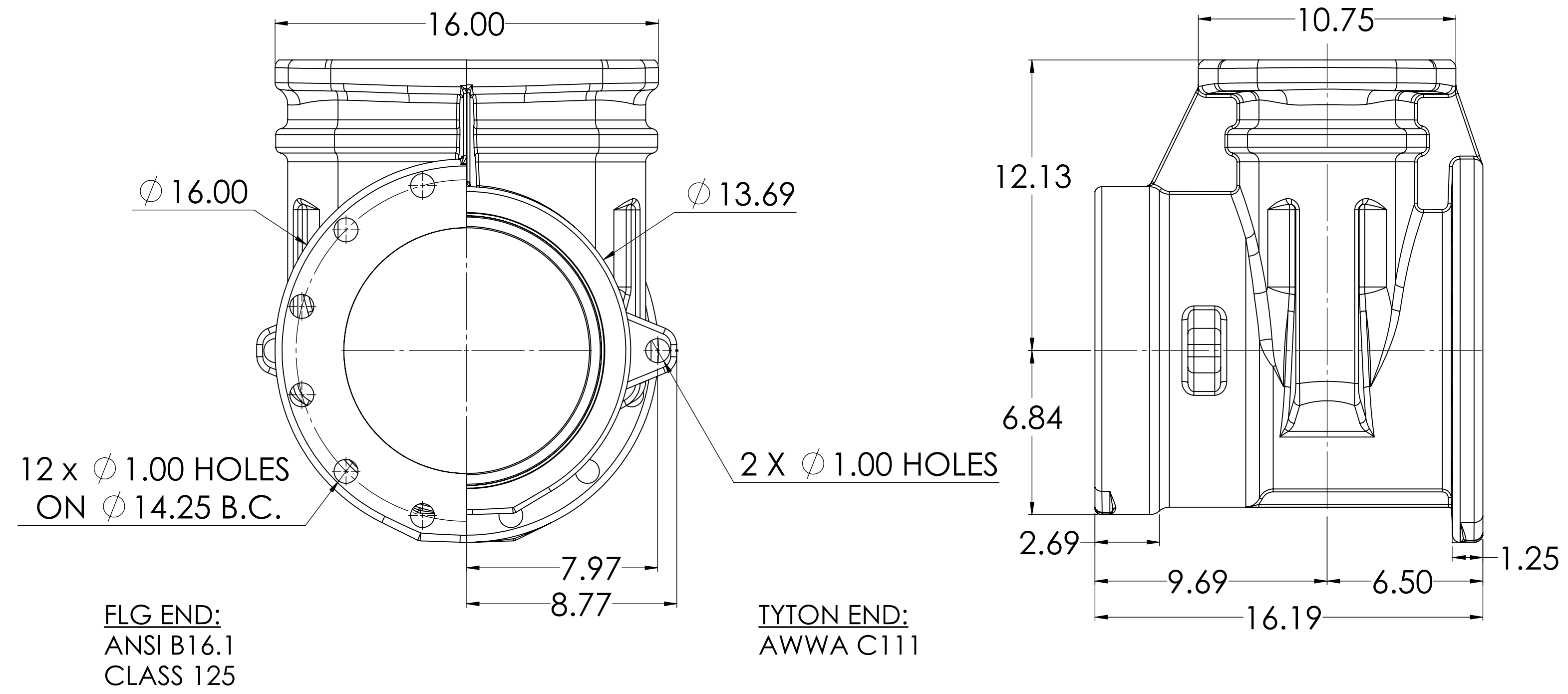


10" C509 MJ X TAP

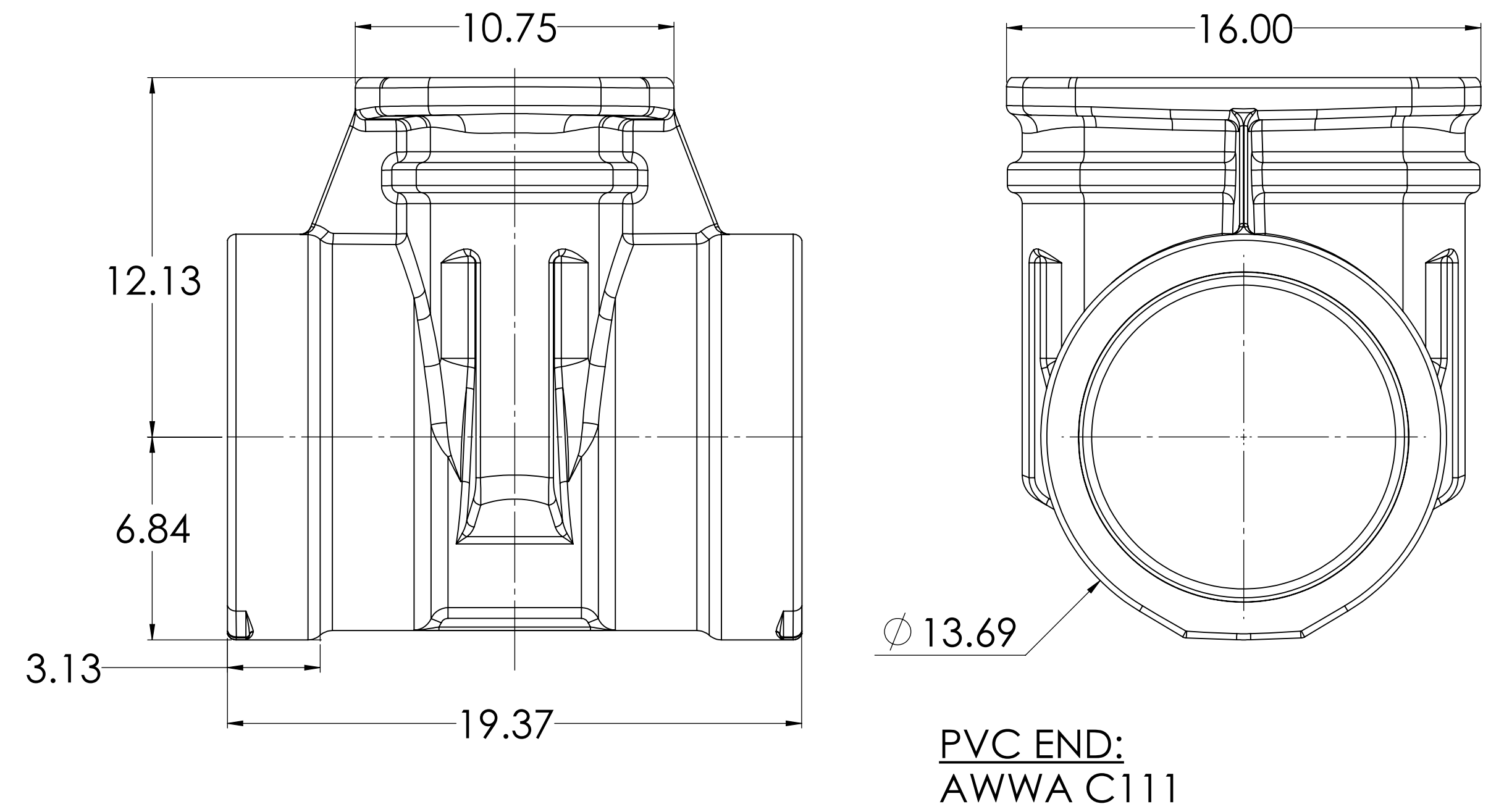


STANDARDS: ANSI/AWWA C111, C115, C118, C120, C122, C124, C125, C126, C127, C128, C129, C130, C131, C132, C133, C134, C135, C136, C137, C138, C139, C140, C141, C142, C143, C144, C145, C146, C147, C148, C149, C150, C151, C152, C153, C154, C155, C156, C157, C158, C159, C160, C161, C162, C163, C164, C165, C166, C167, C168, C169, C170, C171, C172, C173, C174, C175, C176, C177, C178, C179, C180, C181, C182, C183, C184, C185, C186, C187, C188, C189, C190, C191, C192, C193, C194, C195, C196, C197, C198, C199, C200, C201, C202, C203, C204, C205, C206, C207, C208, C209, C210, C211, C212, C213, C214, C215, C216, C217, C218, C219, C220, C221, C222, C223, C224, C225, C226, C227, C228, C229, C230, C231, C232, C233, C234, C235, C236, C237, C238, C239, C240, C241, C242, C243, C244, C245, C246, C247, C248, C249, C250, C251, C252, C253, C254, C255, C256, C257, C258, C259, C260, C261, C262, C263, C264, C265, C266, C267, C268, C269, C270, C271, C272, C273, C274, C275, C276, C277, C278, C279, C280, C281, C282, C283, C284, C285, C286, C287, C288, C289, C290, C291, C292, C293, C294, C295, C296, C297, C298, C299, C300, C301, C302, C303, C304, C305, C306, C307, C308, C309, C310, C311, C312, C313, C314, C315, C316, C317, C318, C319, C320, C321, C322, C323, C324, C325, C326, C327, C328, C329, C330, C331, C332, C333, C334, C335, C336, C337, C338, C339, C340, C341, C342, C343, C344, C345, C346, C347, C348, C349, C350, C351, C352, C353, C354, C355, C356, C357, C358, C359, C360, C361, C362, C363, C364, C365, C366, C367, C368, C369, C370, C371, C372, C373, C374, C375, C376, C377, C378, C379, C380, C381, C382, C383, C384, C385, C386, C387, C388, C389, C390, C391, C392, C393, C394, C395, C396, C397, C398, C399, C400, C401, C402, C403, C404, C405, C406, C407, C408, C409, C410, C411, C412, C413, C414, C415, C416, C417, C418, C419, C420, C421, C422, C423, C424, C425, C426, C427, C428, C429, C430, C431, C432, C433, C434, C435, C436, C437, C438, C439, C440, C441, C442, C443, C444, C445, C446, C447, C448, C449, C450, C451, C452, C453, C454, C455, C456, C457, C458, C459, C460, C461, C462, C463, C464, C465, C466, C467, C468, C469, C470, C471, C472, C473, C474, C475, C476, C477, C478, C479, C480, C481, C482, C483, C484, C485, C486, C487, C488, C489, C490, C491, C492, C493, C494, C495, C496, C497, C498, C499, C500, C501, C502, C503, C504, C505, C506, C507, C508, C509, C510, C511, C512, C513, C514, C515, C516, C517, C518, C519, C520, C521, C522, C523, C524, C525, C526, C527, C528, C529, C530, C531, C532, C533, C534, C535, C536, C537, C538, C539, C540, C541, C542, C543, C544, C545, C546, C547, C548, C549, C550, C551, C552, C553, C554, C555, C556, C557, C558, C559, C560, C561, C562, C563, C564, C565, C566, C567, C568, C569, C570, C571, C572, C573, C574, C575, C576, C577, C578, C579, C580, C581, C582, C583, C584, C585, C586, C587, C588, C589, C590, C591, C592, C593, C594, C595, C596, C597, C598, C599, C600, C601, C602, C603, C604, C605, C606, C607, C608, C609, C610, C611, C612, C613, C614, C615, C616, C617, C618, C619, C620, C621, C622, C623, C624, C625, C626, C627, C628, C629, C630, C631, C632, C633, C634, C635, C636, C637, C638, C639, C640, C641, C642, C643, C644, C645, C646, C647, C648, C649, C650, C651, C652, C653, C654, C655, C656, C657, C658, C659, C660, C661, C662, C663, C664, C665, C666, C667, C668, C669, C670, C671, C672, C673, C674, C675, C676, C677, C678, C679, C680, C681, C682, C683, C684, C685, C686, C687, C688, C689, C690, C691, C692, C693, C694, C695, C696, C697, C698, C699, C700, C701, C702, C703, C704, C705, C706, C707, C708, C709, C710, C711, C712, C713, C714, C715, C716, C717, C718, C719, C720, C721, C722, C723, C724, C725, C726, C727, C728, C729, C730, C731, C732, C733, C734, C735, C736, C737, C738, C739, C740, C741, C742, C743, C744, C745, C746, C747, C748, C749, C750, C751, C752, C753, C754, C755, C756, C757, C758, C759, C760, C761, C762, C763, C764, C765, C766, C767, C768, C769, C770, C771, C772, C773, C774, C775, C776, C777, C778, C779, C780, C781, C782, C783, C784, C785, C786, C787, C788, C789, C790, C791, C792, C793, C794, C795, C796, C797, C798, C799, C800, C801, C802, C803, C804, C805, C806, C807, C808, C809, C810, C811, C812, C813, C814, C815, C816, C817, C818, C819, C820, C821, C822, C823, C824, C825, C826, C827, C828, C829, C830, C831, C832, C833, C834, C835, C836, C837, C838, C839, C840, C841, C842, C843, C844, C845, C846, C847, C848, C849, C850, C851, C852, C853, C854, C855, C856, C857, C858, C859, C860, C861, C862, C863, C864, C865, C866, C867, C868, C869, C870, C871, C872, C873, C874, C875, C876, C877, C878, C879, C880, C881, C882, C883, C884, C885, C886, C887, C888, C889, C890, C891, C892, C893, C894, C895, C896, C897, C898, C899, C900, C901, C902, C903, C904, C905, C906, C907, C908, C909, C910, C911, C912, C913, C914, C915, C916, C917, C918, C919, C920, C921, C922, C923, C924, C925, C926, C927, C928, C929, C930, C931, C932, C933, C934, C935, C936, C937, C938, C939, C940, C941, C942, C943, C944, C945, C946, C947, C948, C949, C950, C951, C952, C953, C954, C955, C956, C957, C958, C959, C960, C961, C962, C963, C964, C965, C966, C967, C968, C969, C970, C971, C972, C973, C974, C975, C976, C977, C978, C979, C980, C981, C982, C983, C984, C985, C986, C987, C988, C989, C990, C991, C992, C993, C994, C995, C996, C997, C998, C999, C1000.		PROPERTY OF MCWANE CORPORATION. ALL RIGHTS RESERVED. THIS DRAWING IS THE PROPERTY OF MCWANE CORPORATION AND IS NOT TO BE REPRODUCED OR TRANSMITTED IN ANY FORM OR BY ANY MEANS, ELECTRONIC OR MECHANICAL, INCLUDING PHOTOCOPYING, RECORDING, OR BY ANY INFORMATION STORAGE AND RETRIEVAL SYSTEM, WITHOUT THE WRITTEN PERMISSION OF MCWANE CORPORATION.	DESCRIPTION: 10" C509 NRS RESILIENT WEDGE GATE VALVE	ESTIMATED WEIGHT: LBS.	DATE: 12/2/2020	SCALE: 1:5	SHEET OF 5	CLW VALVE CO.
---	--	--	--	------------------------	-----------------	------------	------------	---------------

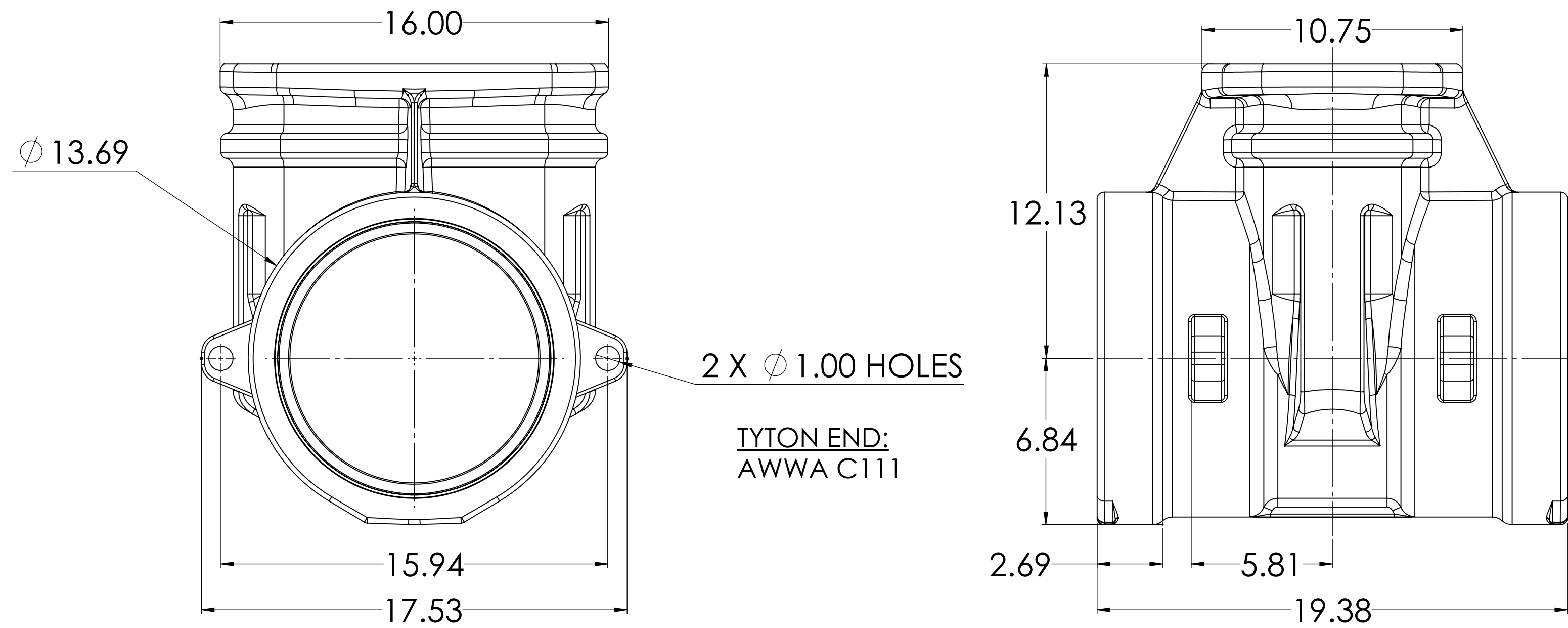
10" C509 FLG X TYTON



10" C509 PVC X PVC

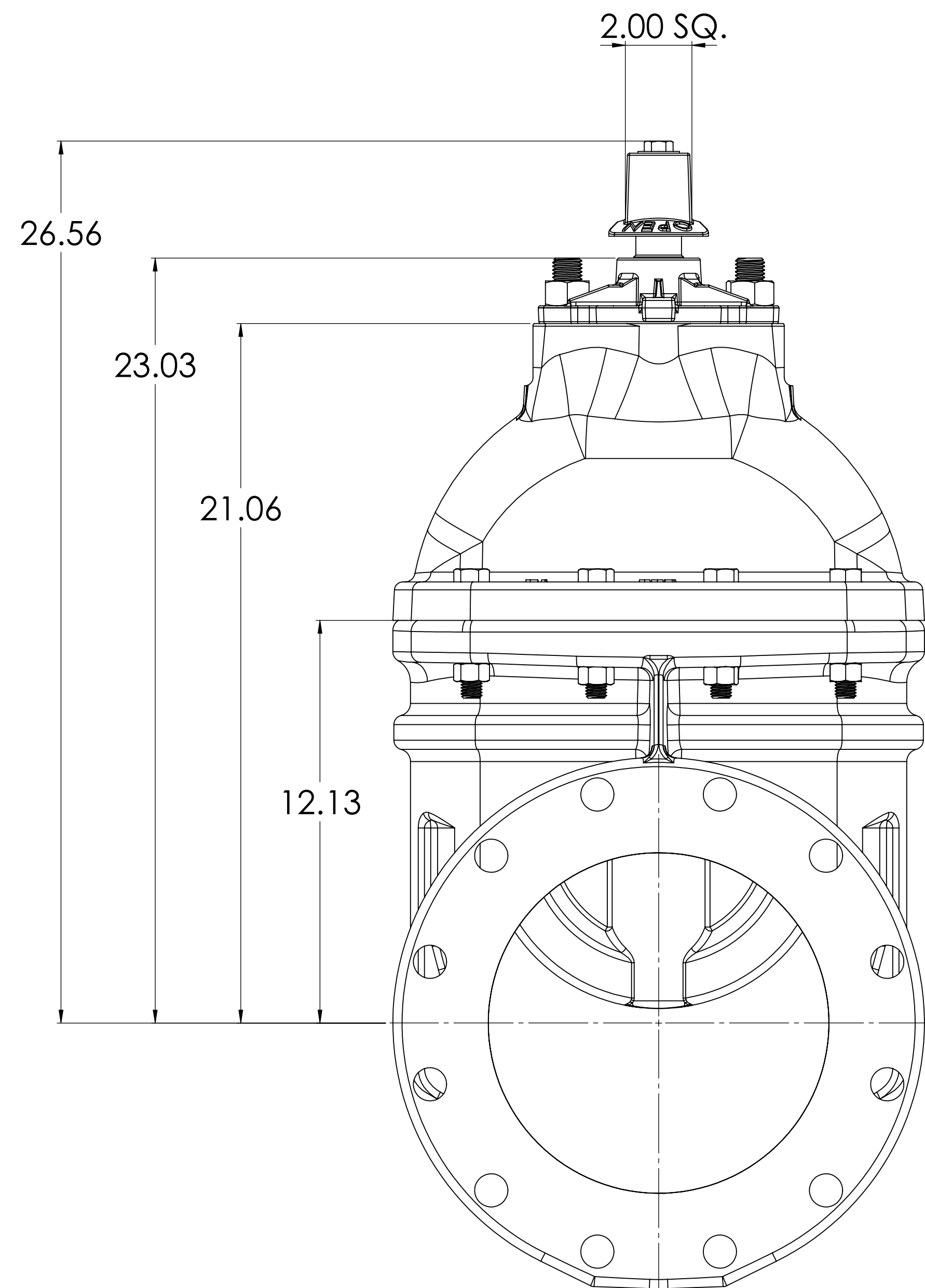


10" C509 TYTON X TYTON

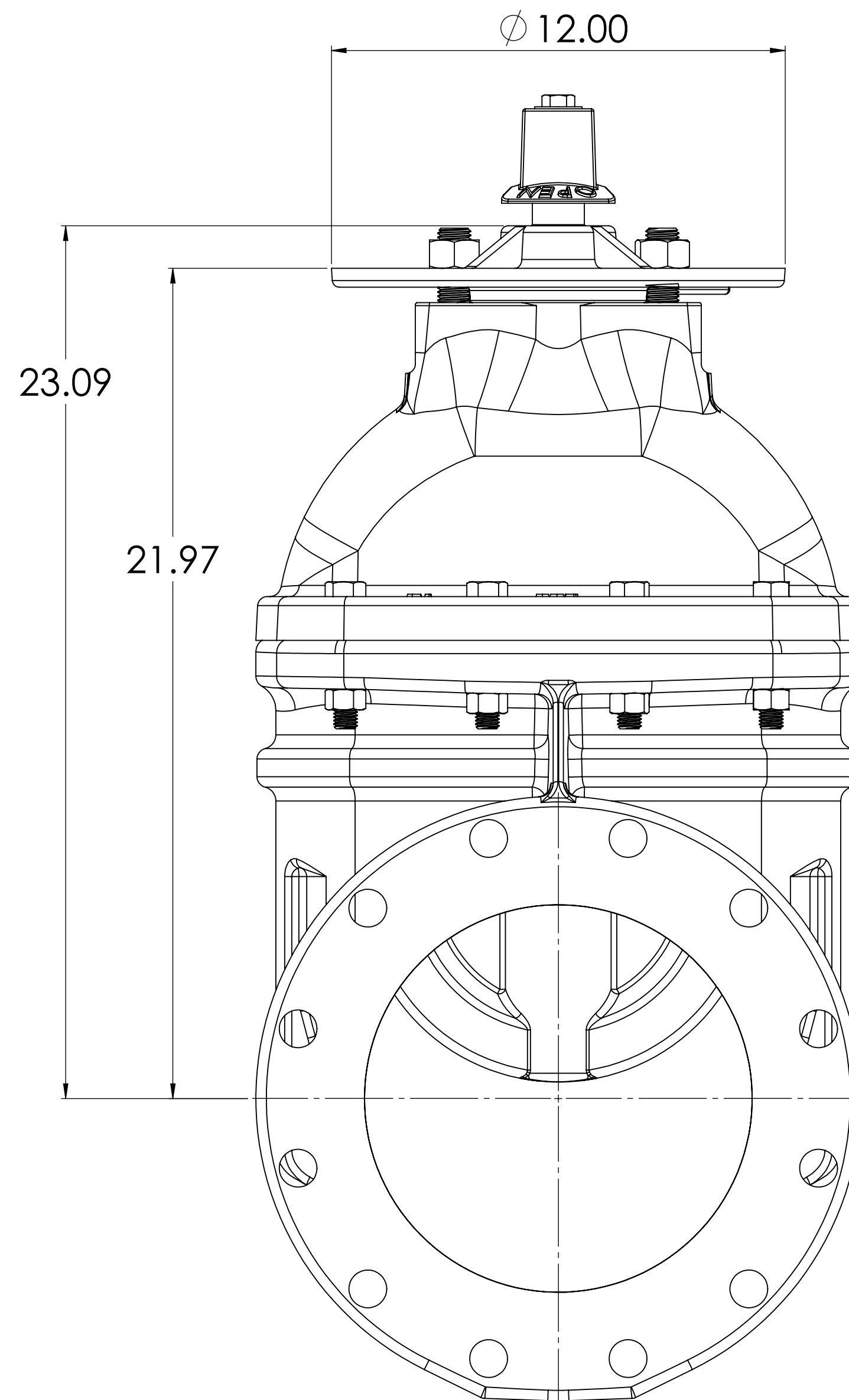


STANDARDS: ANSI/AWWA C111, C115, C118, AND C119.1 TOLERANCES: AS FOLLOWS UNLESS OTHERWISE SPECIFIED.		PROPERTY OF MCWANE CORPORATION. ALL DIMENSIONS AND IDENTIFICATION ARE PROPRIETARY TO MCWANE CORPORATION AND ITS SUBSIDIARIES. REPRODUCTION OR TRANSMISSION OF THIS DRAWING WITHOUT THE WRITTEN PERMISSION OF MCWANE CORPORATION IS PROHIBITED. ALL RIGHTS RESERVED.		DATE: E
CASTING TOLERANCES: 1/4": ± 0.010 1/2": ± 0.012 3/4": ± 0.015 1": ± 0.020 1 1/2": ± 0.025 2": ± 0.030 3": ± 0.040 4": ± 0.050 6": ± 0.060 8": ± 0.070 10": ± 0.080 12": ± 0.090 14": ± 0.100 16": ± 0.110 18": ± 0.120 MIN RADIUS: 1/8" MAX DRAUGHT: 2"		MACHINED DIMENSIONS: DECIMALS: ± 0.005 FRACTIONS: ± 0.004 ANGLE: ± 1° SURFACE FINISH: 125 μin RA: 1/8" MIN RADIUS: 1/8" MAX DRAUGHT: 2"		ESTIMATED WEIGHT: LBS.
DRAWN BY: CW		DATE DRAWN: 12/2/2020	CHEK BY: [Blank]	CHECK DATE: [Blank]
DESCRIPTION: 10" C509 NRS RESILIENT WEDGE GATE VALVE				SHEET OF: 2 OF 5
SCALE: 1:5				SOFTWARE: Solidworks 2018 SP2

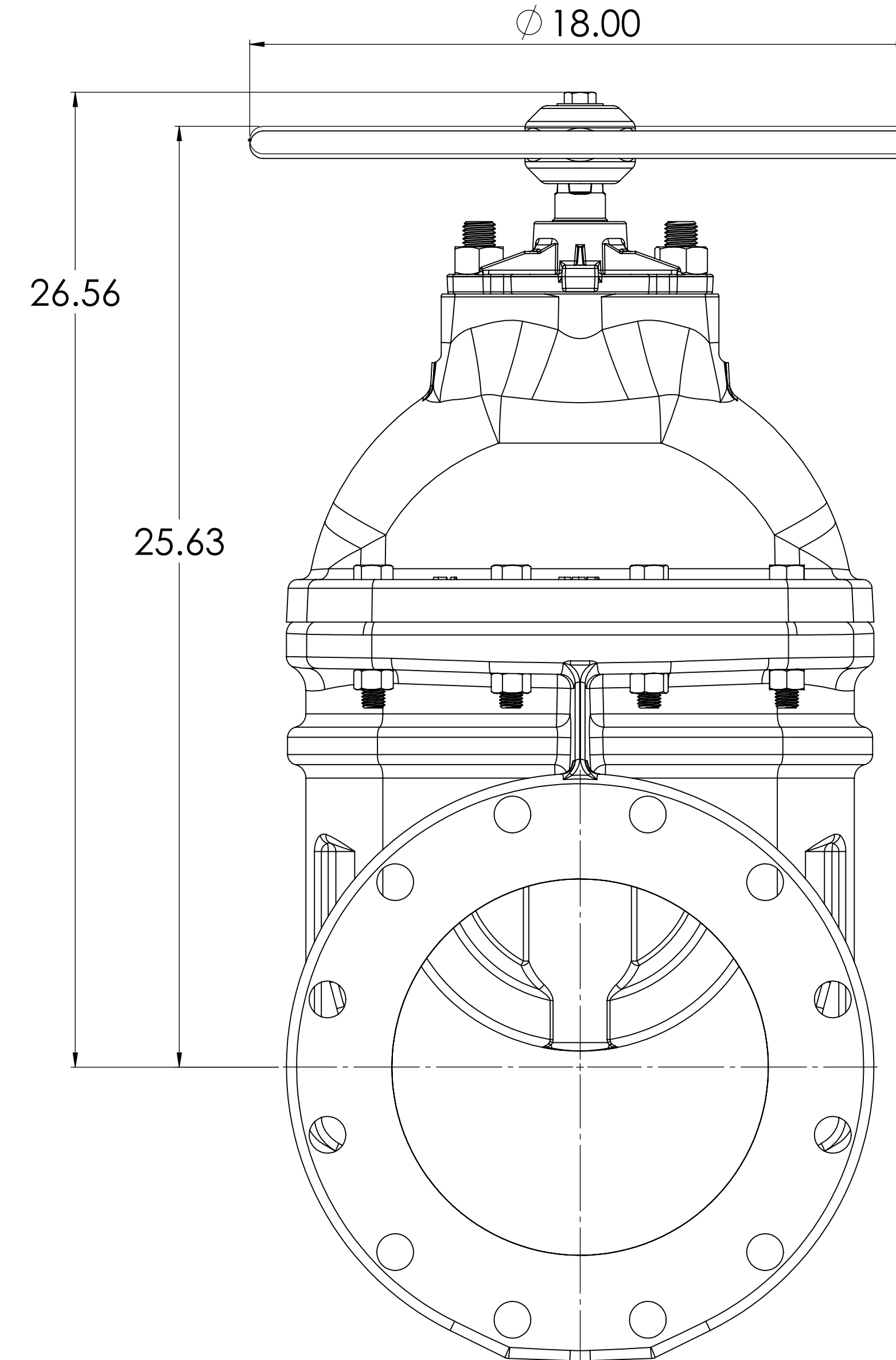
OPERATING NUT WITH O-RING PLATE



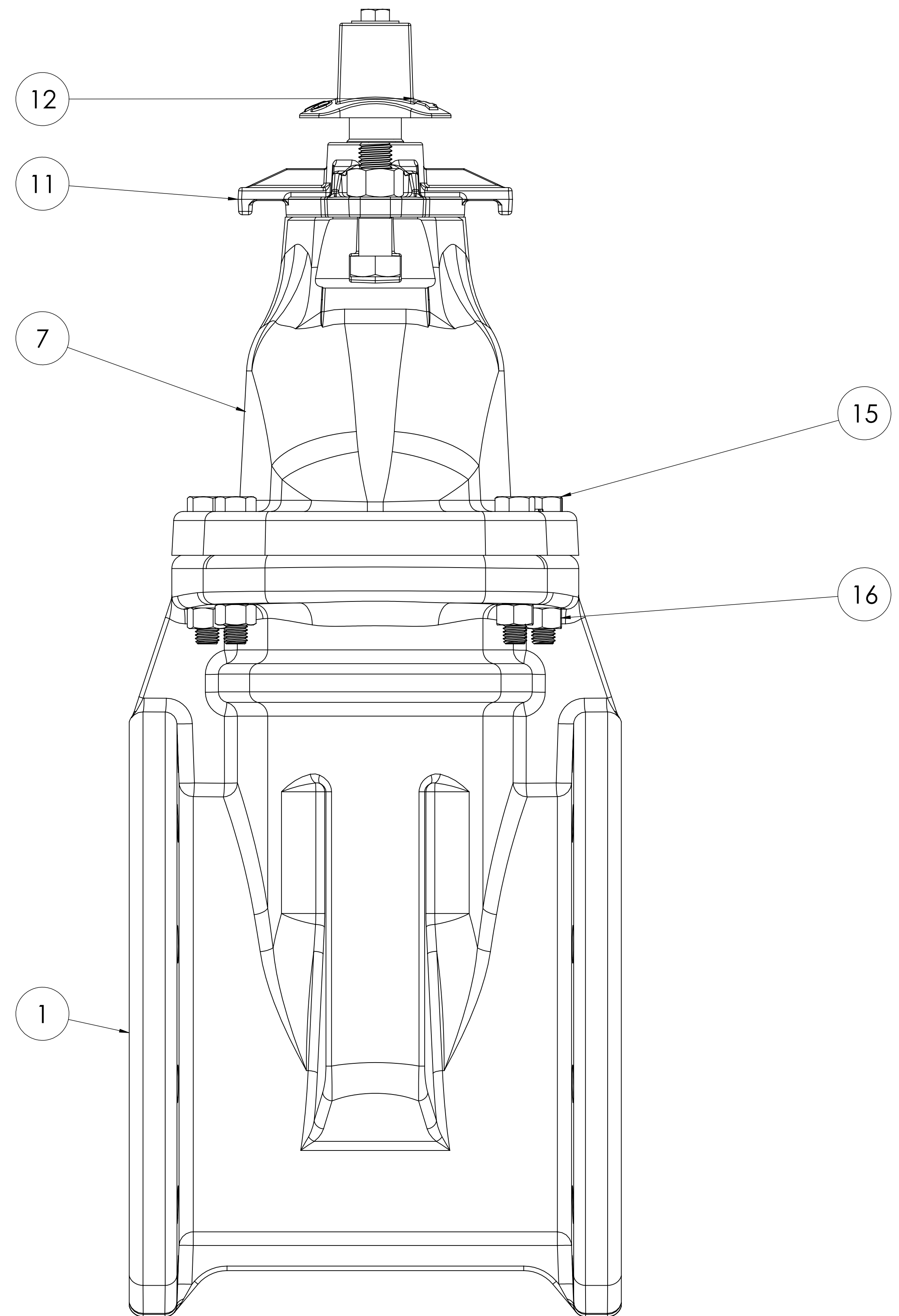
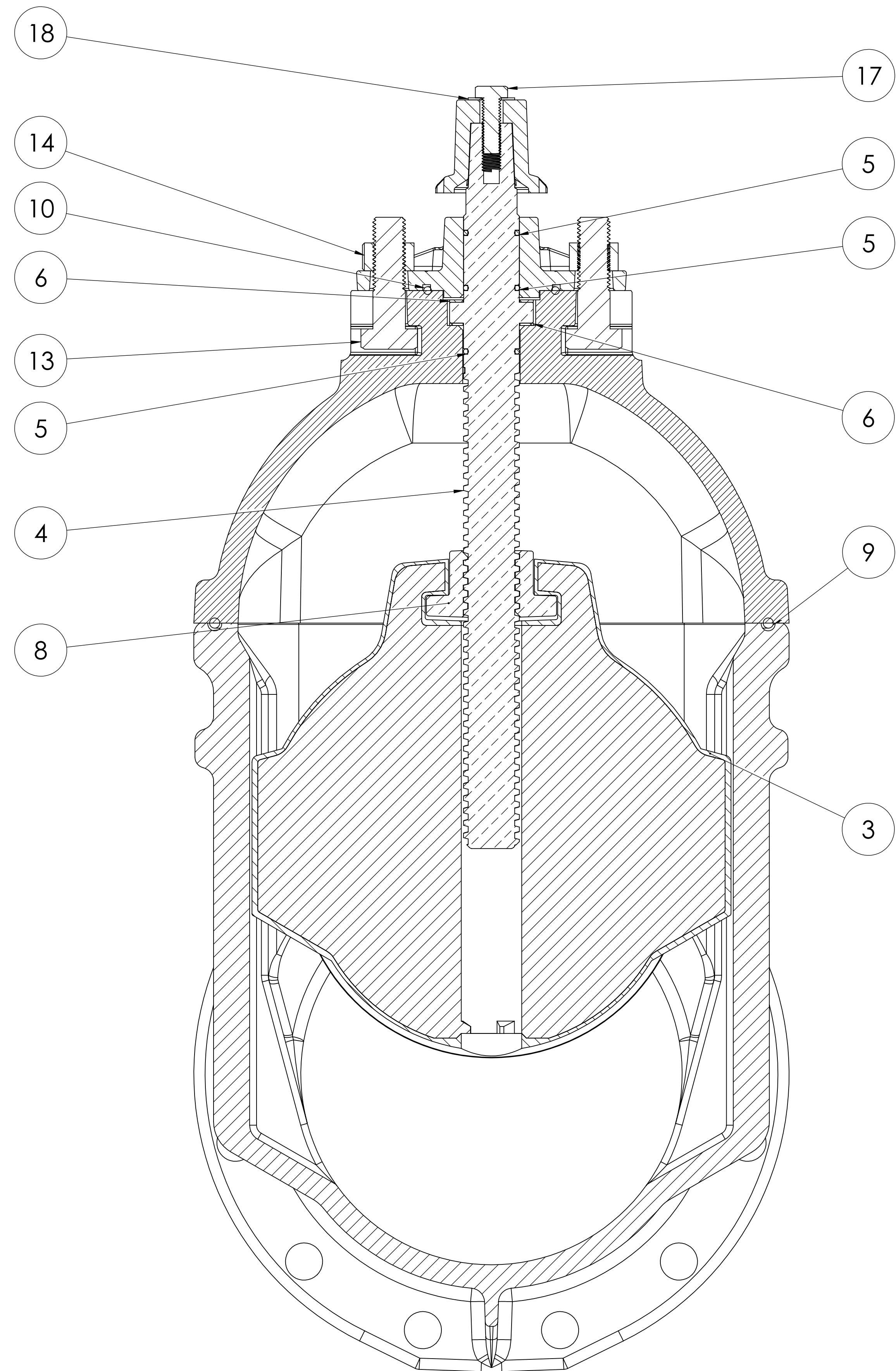
OPERATING NUT WITH INDICATOR POST PLATE



HANDWHEEL WITH O-RING PLATE



STANDARDS: ANSI/ASME B16.10, B16.11, AND B16.41 TOLERANCES: AS FOLLOWS UNLESS OTHERWISE SPECIFIED.		PROPERTY OF MCWANE CORPORATION. ALL DIMENSIONS AND IDENTIFIERS ARE PROPRIETARY TO MCWANE CORPORATION AND ITS SUBSIDIARIES. REPRODUCTION OR USE WITHOUT PERMISSION IS PROHIBITED. OTHERWISE ARRANGED: ALL RIGHTS RESERVED.		DESCRIPTION: 10" C509 NRS RESILIENT WEDGE GATE VALVE	CLW VALVE CO.
CASTING TOLERANCES:	MATCHED DIMENSIONS:	MATERIAL:		ESTIMATED WEIGHT:	3
6-8": ± 0.025	DECIMALS: ± 0.005	PATTERN:		LBS.	3
8-12": ± 0.040	FRACTIONS: ± 1/64	FINISH:			5
12-18": ± 0.050	ANGLES: ± 1°	SURFACE FINISH: 125 μin			
18-UP": ± 0.063	RADS: ± 1/8"	MIN RADIUS: 1/8"			
MIN DRAFT: 2°		DATE DRAWN: 12/2/2020		DRAWN BY: CW	
		CHECKED BY:		SCALE: 1:5	
		SHEET NO.:		APPROVED BY:	
		SHEET OF:		SOFTWARE: Solidworks 2018 SP2	



THIRD ANGLE PROJECTION. STANDARDS: ANSI/ASME Y14.10, Y14.1, AND Y14.41. TOLERANCES: AS FOLLOWS UNLESS OTHERWISE SPECIFIED.		PROPERTY OF MCWANE CORPORATION. ALL DIMENSIONS AND IDENTIFYING INFORMATION ARE PROPRIETARY TO MCWANE CORPORATION AND ITS SUBSIDIARIES. REPRODUCTION OR USE WITHOUT PERMISSION OF MCWANE CORPORATION IS PROHIBITED. ALL RIGHTS RESERVED.		SHEET NO. E
CASTING TOLERANCES: 0.4": ± 0.02 0.8": ± 0.04 1.2": ± 0.06 1.8": ± 0.08 MIN. RADIUS: 1/8" FINISH: Z		MACHINED DIMENSIONS: DECIMALS: ± 0.005 FRACTIONS: ± 0.001 ANGLE: ± 1/16" SURFACE FINISH: 125 μin RADIUS: 1/8"		MATERIAL: 10" C509 NRS RESILIENT WEDGE GATE VALVE
ESTIMATED WEIGHT: LBS.		DRAWN BY: CW		
DATE DRAWN: 12/2/2020		CHECKED BY: [Blank]		
SCALE: 1:5		SOFTWARE: Solidworks 2018 SP2		

CLW VALVE CO.
 SHEET NO. E
 4 OF 5
 D

<u>ITEM NO.</u>	<u>COMPONENT</u>	<u>QTY.</u>	<u>SIZE</u>	<u>STANDARD MATERIAL</u>	<u>MATERIAL OPTIONS</u>
1	BODY	1		DUCTILE IRON	
2	WEDGE	1		EPDM/DUCTILE IRON	
3	STEM	1		C86700	C99500(LOW ZINC), 304 SS, 316 SS
4	O-RING	3	#218	EPDM	BUNA-N
5	THRUST BEARING	2		ACETAL	C26000
6	COVER	1		DUCTILE IRON	
7	STEM NUT	1		C87850	C87610 (LOW ZINC)
8	O-RING	1	#452	EPDM	BUNA-N
9	O-RING	1	#339	EPDM	BUNA-N
10	O-RING PLATE	1		DUCTILE IRON	**INDICATOR POST PLATE**
11	OPERATING NUT	1		DUCTILE IRON	C86700, ** ϕ 14" HANDWHEEL**
12	CAPSCREW	2	7/8" - 9 X 3"	18-8 SS	316 SS
13	HEX NUT	2	7/8" - 9	18-8 SS	316 SS
14	CAPSCREW	8	5/8" - 11 X 3-1/2"	18-8 SS	316 SS
15	HEX NUT	8	5/8" - 11	18-8 SS	316 SS
16	CAPSCREW	1	1/2" - 13 X 1-1/2"	18-8 SS	316 SS
17	WASHER	1	1/2"	18-8 SS	316 SS

VALVES CONFORM WITH THE FOLLOWING STANDARDS

- AWWA C509
- NSF 61
- LOW ZINC BRASS STEM AND STEM NUT AVAILABLE
- 100% DOMESTIC FASTENERS AND ORINGS OPTIONS AVAILABLE
- *OPEN LEFT* (COUNTERCLOCKWISE) AND *OPEN RIGHT* (CLOCKWISE) OPTIONS AVAILABLE
- TURNS TO OPEN FROM FULLY CLOSED: 32
- AWWA MAXIMUM ALLOWABLE CLOSING TORQUE 185 FT-LBS
- OPTIONAL HANDWHEEL CAN BE SUBSTITUTED FOR STANDARD 2" SQUARE OP. NUTS.
 - ****NOTE: STANDARD HANDWHEEL SIZE LISTED OUT IN PARTS LIST.****
- MAXIMUM PRESSURE RATING 250 PSI

E	2317	BLS	11/30/23
D	-	CW	12/20/21
C	-	BLS	08/13/21
B	-	CW	05/18/21
A	-	CW	12/02/20
SYM	ECN	DR	DATE

<small>THIRD ANGLE PROJECTION. STANDARDS: ANSI/ASME Y14.100, Y14.1, AND Y14.41. TOLERANCES AS FOLLOWS UNLESS OTHERWISE SPECIFIED.</small>		<small>PROPERTY OF MCWANE CORPORATION. ALL DIMENSIONS AND IDENTIFICATION ARE PROPRIETARY TO MCWANE CORPORATION AND ITS SUBSIDIARIES. IDENTIFICATION REQUIRED UPON COMPLETION OF OTHERWISE ARRANGED. ALL RIGHTS RESERVED.</small>	
<small>CASTING TOLERANCES:</small> 0.4" ± 1/32" 0.8" ± 3/64" 1.2" ± 1/16" 1.6" ± 3/32" 18"UP: ± 1/8" MIN RADII: 1/8" MIN DRILLS: 7"	<small>MACHINED DIMENSIONS:</small> DECIMALS: ± 0.005 FRACTIONS: ± 1/64" ANGLE: ± 1° SURFACE FINISH: 125 μin RADI: 1/8"	<small>ESTIMATED WEIGHT:</small> LBS.	<small>DESCRIPTION:</small> 10" C509 NRS RESILIENT WEDGE GATE VALVE
<small>REV BY:</small> CW	<small>DATE/ISSUE:</small> 12/2/2020	<small>CHK BY:</small> <small>CHK DATE:</small>	<small>SCALE:</small> 1:5 <small>SHEET OF:</small> 5 <small>SHEET OF:</small> 5 <small>DATE:</small> 11/30/23 <small>DESIGNER:</small> E <small>APPROVER:</small> CLW VALVE CO.