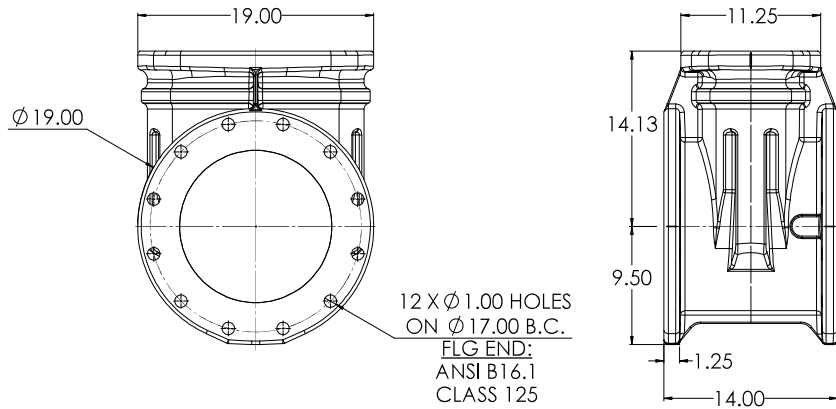
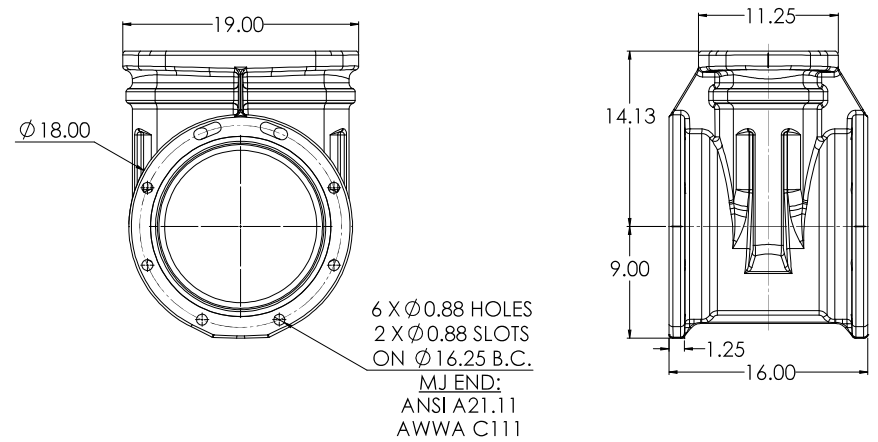


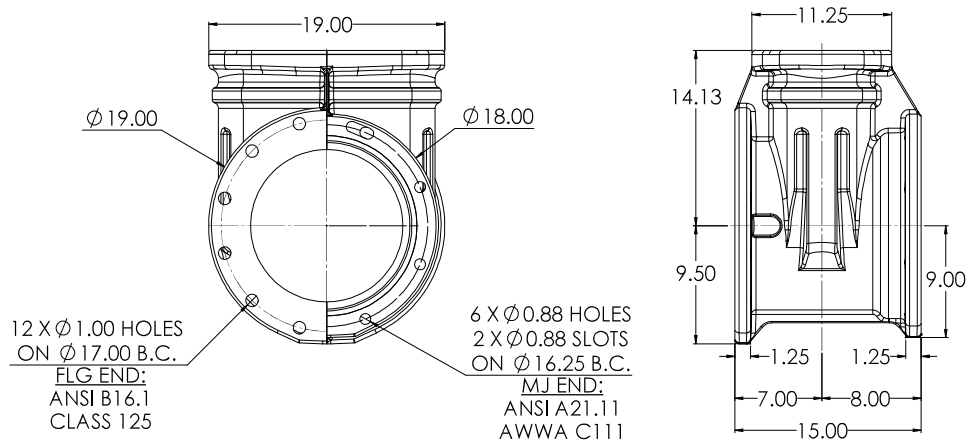
12" C509 FLG X FLG



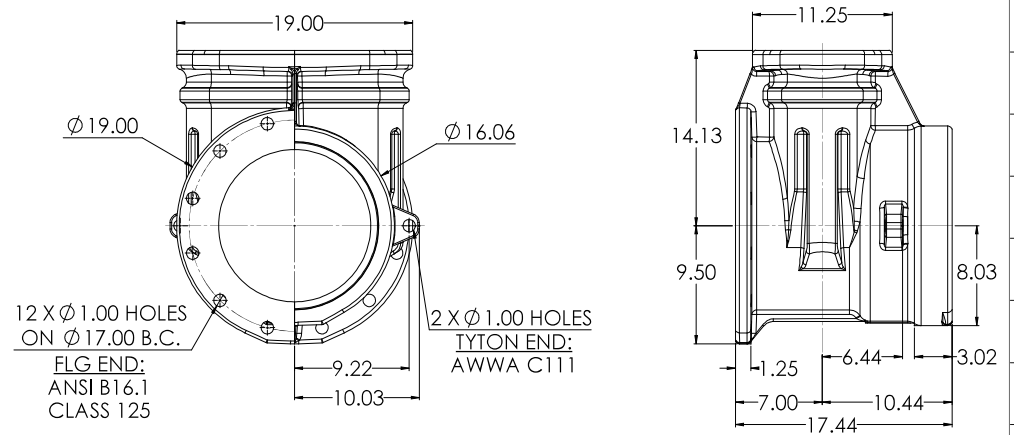
12" C509 MJ X MJ



12" C509 FLG X MJ

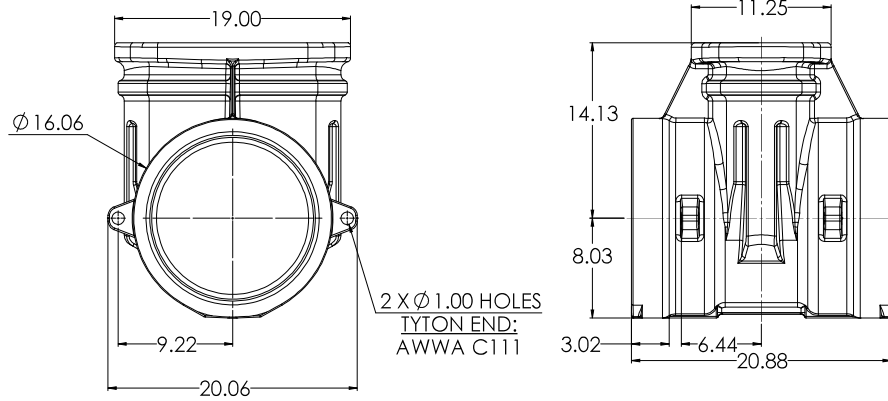


12" C509 FLG X TYTON

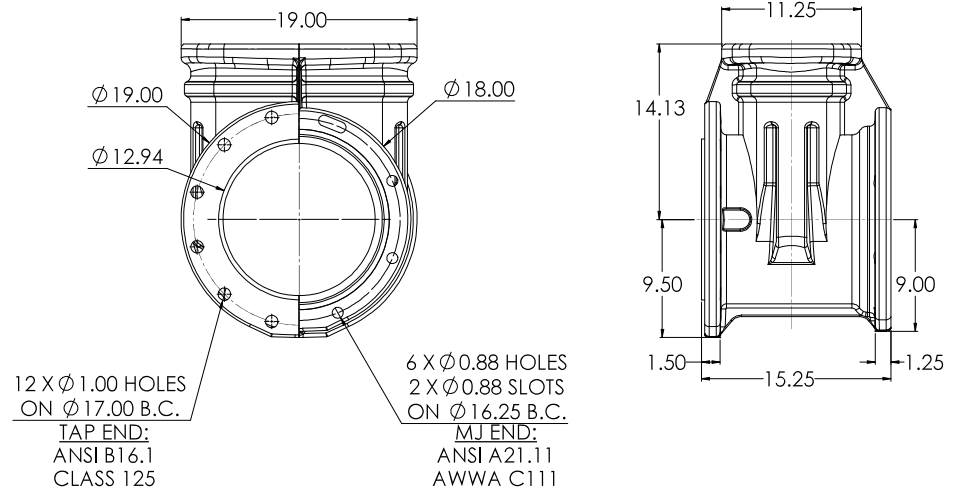


CLW CLW Valve Co. 12345 Industrial Blvd. Houston, TX 77001 Phone: 281-555-1234 Fax: 281-555-5678 Email: sales@clwvalve.com		Project: A Title: 12" C509 CS&Y RESILIENT WEDGE LBS. GATE VALVE Scale: 1:5 Date: 12/2/2020 Drawn: CW Checked: [Blank] Project No: [Blank] Sheet No: 6 of 6	
---	--	--	--

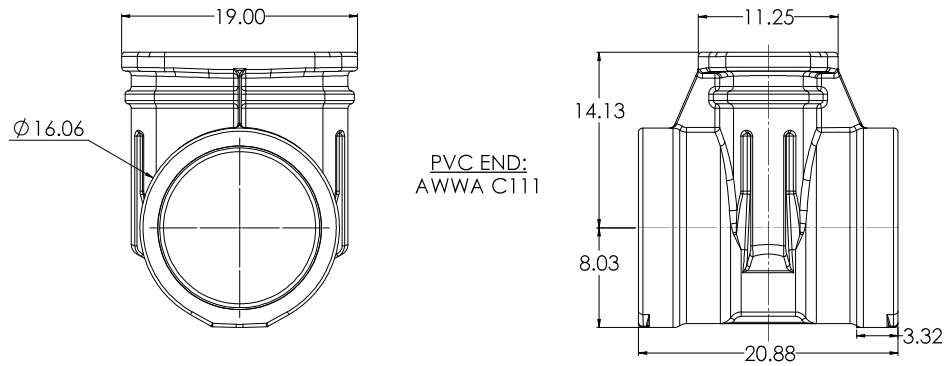
12" C509 TYTON X TYTON



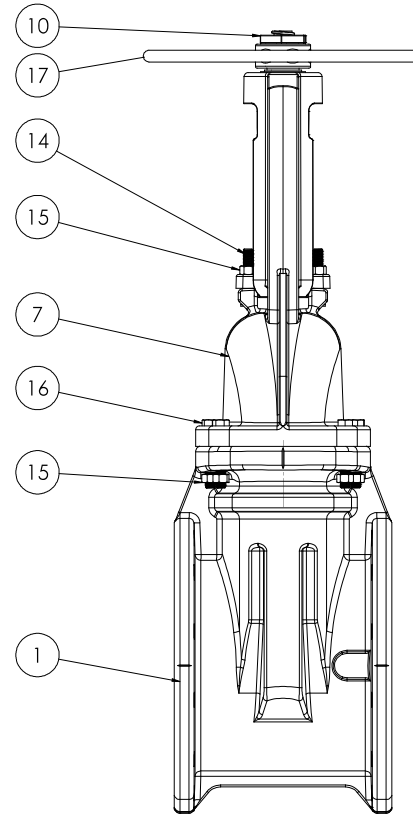
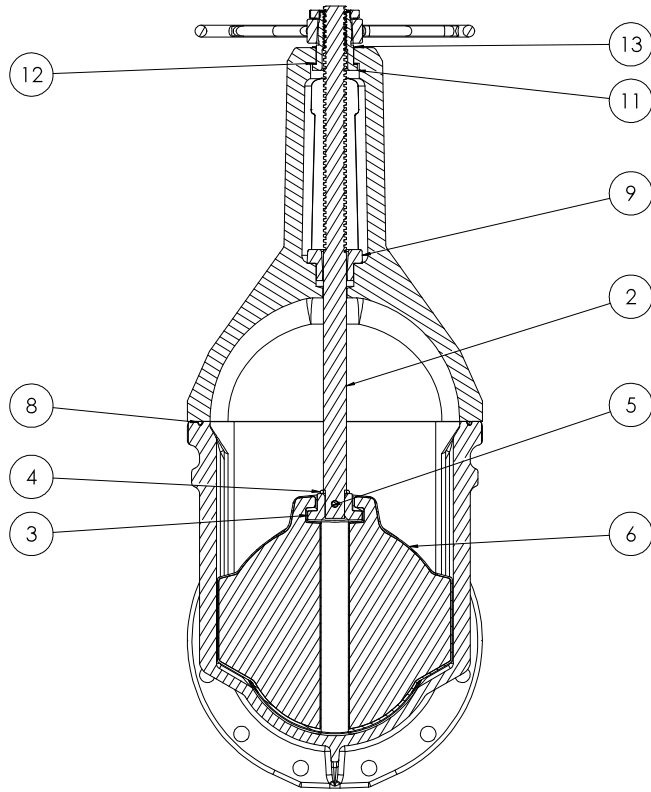
12" C509 MJ X TAP



12" C509 PVC X PVC



REVISED DATE: 12/20/2020 BY: CW		DESCRIPTION 12" C509 CS&Y RESILIENT WEDGE GATE VALVE		SCALE T:5		DATE 12/20/2020		PROJECT 2016 SP2		CLW 2 6 D	
--	--	--	--	---------------------	--	---------------------------	--	----------------------------	--	----------------------------------	--



COMPANY: CLW VALVE CO. ADDRESS: 12280 122ND AVE. S.W. CITY: ALBERTA, CANADA PHONE: (780) 461-1111 FAX: (780) 461-1112 WWW: WWW.CLWVALVE.COM		DRAWING NO.: 12280-001 REV: 1 DATE: 12/28/2020 DRAWN BY: J. WILSON CHECKED BY: J. WILSON APPROVED BY: J. WILSON		PROJECT NO.: PROJECT NAME: PROJECT LOCATION: PROJECT DESCRIPTION: PROJECT STATUS:		SHEET NO.: A TOTAL SHEETS: 4 DRAWING TITLE: 12" C509 CS&Y RESILIENT WEDGE GATE VALVE SCALE: LBS. T:10 DATE: 12/28/2020 DRAWN BY: J. WILSON CHECKED BY: J. WILSON APPROVED BY: J. WILSON		CLW VALVE CO. 4 D	
--	--	--	--	---	--	--	--	-------------------------	--

<u>ITEM NO.</u>	<u>COMPONENT</u>	<u>QTY.</u>	<u>SIZE</u>	<u>STANDARD MATERIAL</u>	<u>MATERIAL OPTIONS</u>
1	BODY	1	-	CAST IRON	CAST IRON
2	STEM	1	-	C65500	304 SS, 316 SS
3	OPERATING NUT	1		C87610	C87850, C87845, C89833, C99500 (LOW ZINC)
4	O-RING	1	#325	EPDM	BUNA-N
5	DRIVLOK PIN	1	7/16" X 2 1/4"	303 SS	-
6	WEDGE	1	-	EPDM/DUCTILE IRON	-
7	COVER	1	-	CAST IRON	DUCTILE IRON
8	O-RING	1	#455	EPDM	BUNA-N
9	GLAND	1	-	CAST IRON	-
10	HOLD DOWN NUT	1	-	C87850	C87610
11	TOP STEM NUT	1	-	C86700	C99400 (LOW ZINC)
12	THRUST WASHER	1	-	NYLATRON	-
13	THRUST WASHER	2	-	C26000	-
14	SQUARE HEAD CAPSCREW	2	5/8"-11 X 3 1/4"	18-8 SS	316 SS
15	HEX NUT	10	5/8"-11	18-8 SS	316 SS
16	HEX HEAD CAPSCREW	8	5/8"-11 X 4"	18-8 SS	316 SS
17	HANDWHEEL	1	Ø 18"	DUCTILE IRON	-

- VALVES CONFORM WITH THE FOLLOWING STANDARDS
 - AWWA C509
 - NSF 61
- 100% DOMESTIC FASTENERS AND ORINGS OPTIONS AVAILABLE
- *OPEN LEFT* (COUNTERCLOCKWISE) AND *OPEN RIGHT* (CLOCKWISE) OPTIONS AVAILABLE
- TURNS TO OPEN FROM FULLY CLOSED: 38
- AWWA MAXIMUM ALLOWABLE CLOSING TORQUE 200 FT-LBS

<small>CLW</small> <small>12" C509 CS&Y RESILIENT WEDGE GATE VALVE</small>		<small>REV</small> <small>DATE</small> <small>BY</small> <small>CHKD</small> <small>APP'D</small>	<small>REV</small> <small>DATE</small> <small>BY</small> <small>CHKD</small> <small>APP'D</small>	<small>REV</small> <small>DATE</small> <small>BY</small> <small>CHKD</small> <small>APP'D</small>	<small>REV</small> <small>DATE</small> <small>BY</small> <small>CHKD</small> <small>APP'D</small>
<small>12" C509 CS&Y RESILIENT WEDGE GATE VALVE</small>		<small>REV</small> <small>DATE</small> <small>BY</small> <small>CHKD</small> <small>APP'D</small>		<small>REV</small> <small>DATE</small> <small>BY</small> <small>CHKD</small> <small>APP'D</small>	
<small>LBS</small>		<small>T:10</small>		<small>5</small> <small>6</small>	