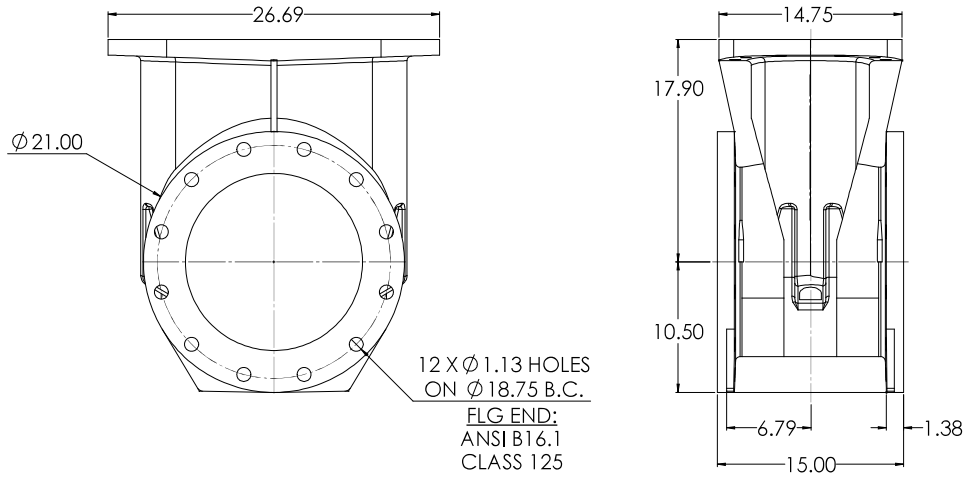
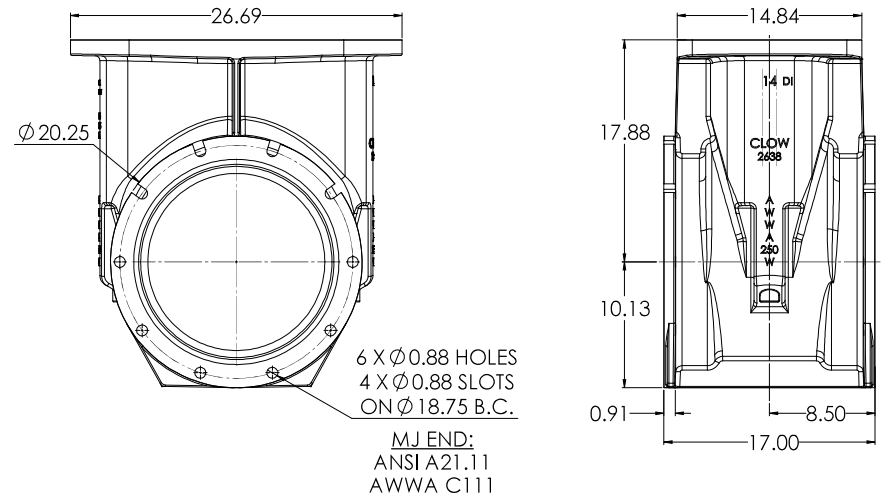


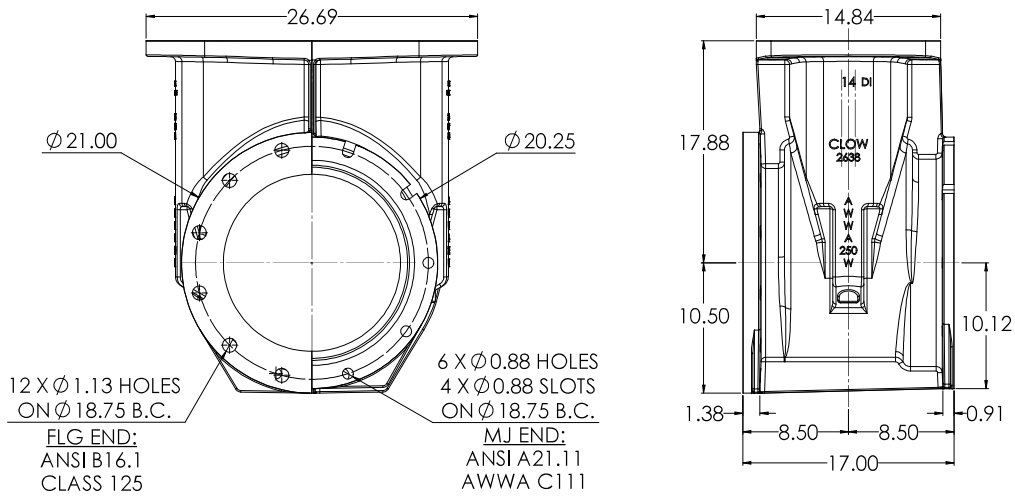
14" C515 FLG X FLG



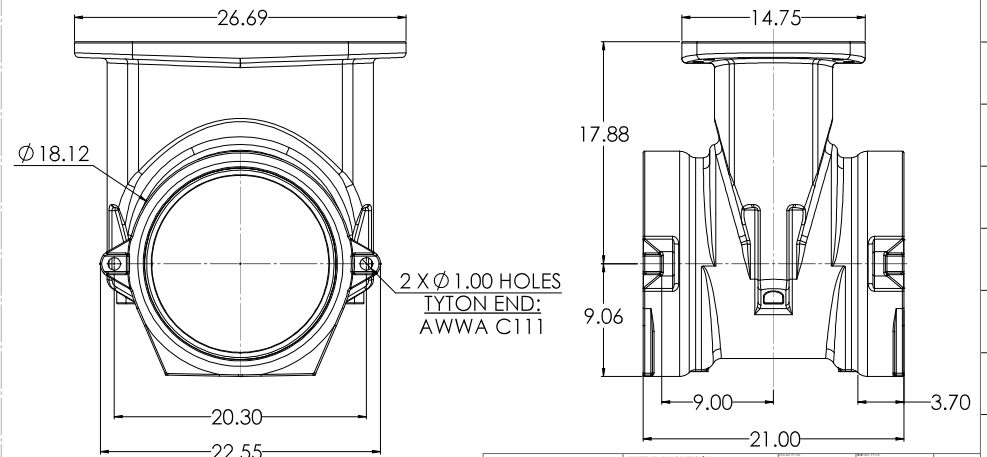
14" C515 MJ X MJ



14" C515 FLG X MJ

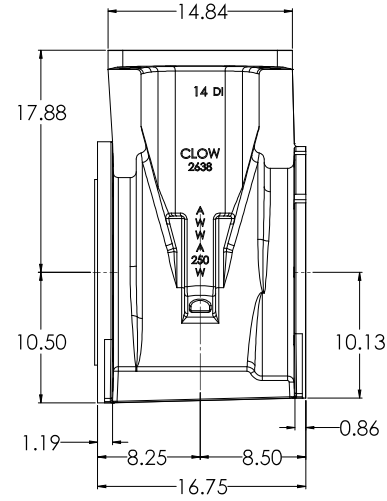
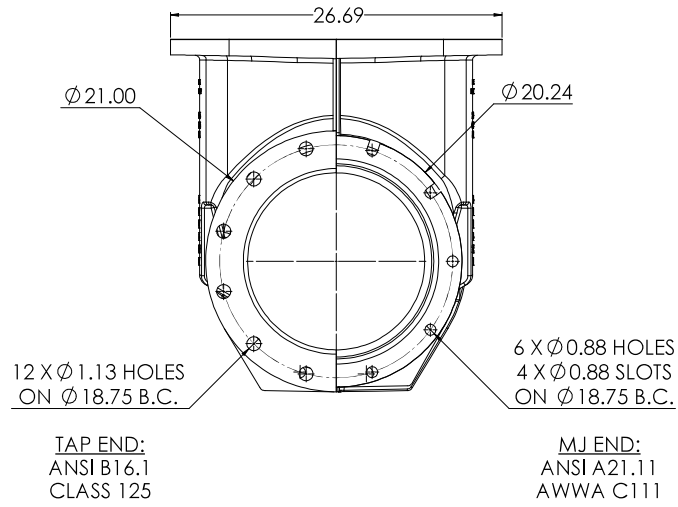


14" C515 TYTON X TYTON



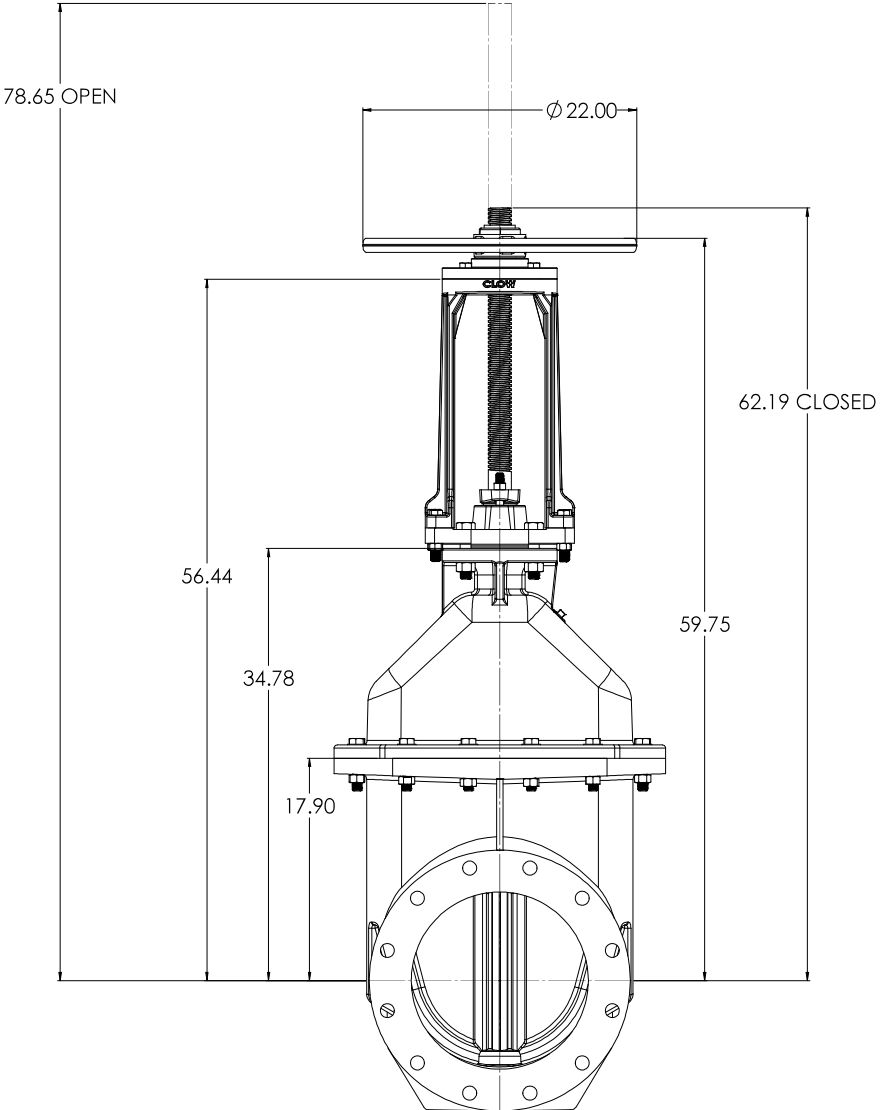
COMPANY: CLW ADDRESS: 12345 INDUSTRIAL BLVD CITY: CLEVELAND, OH 44130 PHONE: (216) 555-1234 FAX: (216) 555-5678 E-MAIL: SALES@CLW.COM WEBSITE: WWW.CLW.COM		PROJECT: 14" C515 CS&Y RESILIENT WEDGE GATE VALVE DRAWING NO: 14" C515 CS&Y RESILIENT WEDGE GATE VALVE DATE: 12/29/2020 SCALE: 1:1 SHEET NO: 6 TOTAL SHEETS: 6		DRAWN BY: J. SMITH CHECKED BY: M. JONES APPROVED BY: R. BROWN DATE: 12/29/2020	PROJECT NO: A SHEET NO: D SCALE: 1:1 DATE: 12/29/2020
--	--	---	--	---	--

14" C515 MJ X TAP



COMPANY: CLW ADDRESS: 12345 MAIN ST CITY: ANYTOWN, CA 90001 PHONE: (555) 123-4567 FAX: (555) 987-6543 WEBSITE: WWW.CLW.COM	PROJECT: 14" C515 CS&Y RESILIENT WEDGE GATE VALVE DATE: 12/23/2020 DRAWN BY: CW CHECKED BY: [] SCALE: 1:5 SHEET NO: 6 TOTAL SHEETS: 6	REVISIONS:	2 D
---	--	------------	--------

OS&Y WITH HANDWHEEL



COMPANY: CLW ADDRESS: 12345 Main St, Houston, TX 77001 PHONE: 281-555-1234 FAX: 281-555-5678 E-MAIL: sales@clw.com WEBSITE: www.clw.com		PROJECT: 14" CS15 OS&Y RESILIENT WEDGE GATE VALVE DRAWING NO: LBS- SCALE: T:10 DATE: 12/3/2020		SHEET NO: 3 TOTAL SHEETS: 6 REV: D
--	--	---	--	--

<u>ITEM NO.</u>	<u>COMPONENT</u>	<u>QTY.</u>	<u>SIZE</u>	<u>STANDARD MATERIAL</u>	<u>MATERIAL OPTIONS</u>
1	BODY	1	-	DUCTILE IRON	-
2	WEDGE	1	-	EPDM/DUCTILE IRON	-
3	STEM	1	STEM	DUCTILE IRON	-
4	STEM NUT	1	-	C87850	C99500 (LOW ZINC)
5	COILED SPRING PIN	1	5/16"	302/304 SS	-
6	O-RING	1	#325	EPDM	BUNA-N
7	O-RING	1	#463	EPDM	BUNA-N
8	COVER	1	-	DUCTILE IRON	-
9	OS&Y COVER SPACER	1	-	C87850	-
10	HANDWHEEL	1	Ø 22"	CAST IRON	-
11	STUFFING BOX	1	-	CAST IRON	-
12	BUSHING	1	-	C87850	-
13	GLAND	1	-	C87850	C83600, C65500 (LOW ZINC)
14	FOLLOWER PLATE	1	-	CAST IRON	-
15	PIPE PLUG	1	1/2" - NPT	18-8 SS	316 SS
16	YOKE	1	-	CAST IRON	-
17	TOP STEM NUT	1	-	C26000	-
18	KEY	1	3/8" X 1 3/4"	18-8 SS	316 SS
19	OS&Y RETAINER PLATE	1	-	CAST IRON	-
20	WASHER	12	3/4"	18-8 SS	316 SS
21	HEX NUT	12	3/4"-10	18-8 SS	316 SS
22	HEX HEAD CAPSCREW	12	3/4"-10 X 3 3/4"	18-8 SS	316 SS
23	HEX HEAD CAPSCREW	4	7/8"-9 X 4"	18-8 SS	316 SS
24	HEX NUT	4	7/8"-9	18-8 SS	316 SS
25	STUD	2	5/8"-11 X 3 1/2"	18-8 SS	316 SS
26	HEX HEAD CAPSCREW	8	5/8"-11 X 3 3/4"	18-8 SS	316 SS
27	HEX NUT	8	5/8"-11	18-8 SS	316 SS
28	HEX NUT	2	5/8"-11	18-8 SS	316 SS
29	O-RING	1	#425	EPDM	BUNA-N
30	HOLD DOWN NUT	1	-	87850	-
31	HEX HEAD CAPSCREW	4	5/8"-11 X 2"	18-8 SS	316 SS

- VALVES CONFORM WITH THE FOLLOWING STANDARDS
 - AWWA C515
 - NSF 61
- LOW ZINC BRASS STEM AND STEM NUT AVAILABLE
- 100% DOMESTIC FASTENERS AND ORINGS OPTIONS AVAILABLE
- *OPEN LEFT* (COUNTERCLOCKWISE) AND *OPEN RIGHT* (CLOCKWISE) OPTIONS AVAILABLE
- TURNS TO OPEN FROM FULLY CLOSED: 52
- AWWA MAXIMUM ALLOWABLE CLOSING TORQUE 250 FT-LBS

CLW CLW WORKS CO.		14" CS15 OS&Y RESILIENT WEDGE GATE VALVE		A	5 6
DATE: 12/29/2020 TIME: 10:00 AM DRAWN BY: [Name] CHECKED BY: [Name]	PROJECT: [Project Name] CLIENT: [Client Name]	SCALE: 1:10 SHEET NO: 5 OF 6	LBS.	12/29/2020	6