

**FIRE HYDRANTS
ORDERING INFORMATION
CLOW VALVE COMPANY**

When placing orders or making inquiries, please furnish the following information. This information will enable us to answer your questions, prepare quotations, and fill your order promptly. Lack of essential information is almost sure to cause delays.

Use Figure Number wherever possible to identify the product wanted

1. **Quality and style.**
2. **Construction:** Safety Flange.
3. **Size of main valve openings:** 4¹/₂ or 5¹/₄ inch.
4. **Number and size of pumper nozzles.**
5. **Type of inlet connection:** Flanged, mechanical joint, or Tyton (6")
6. **Size of inlet connection:** 4-, 6-, or 8"
7. **Depth of trench or bury:** Distance from ground line to bottom of connecting pipe.
8. **Direction of opening:** Usually open to left (counterclockwise); open right (clockwise), when specified.
9. **Size and shape of operating nut:** National Standard is 1¹/₂-inch pentagon measured from point to opposite flat at base of nut.
10. **Hose and pumper nozzle threads:** If other than National Standard, thread specification and nut size must be furnished in the following manner:
 - (a) Send sample nozzle or male hose coupling; or
 - (b) Send drawing giving complete thread specification; or
 - (c) Refer us to previous hydrant order. Complete records are kept of all installations.
11. **Color:** Specify color of paint wanted.

Specifications

Clow, Eddy, and Medallion Fire Hydrants meet or exceed the requirements of American Water Works Association Specification AWWA C502, Fire Hydrants for Ordinary Water Service.

Hose and Hydrant Wrenches



F-2750

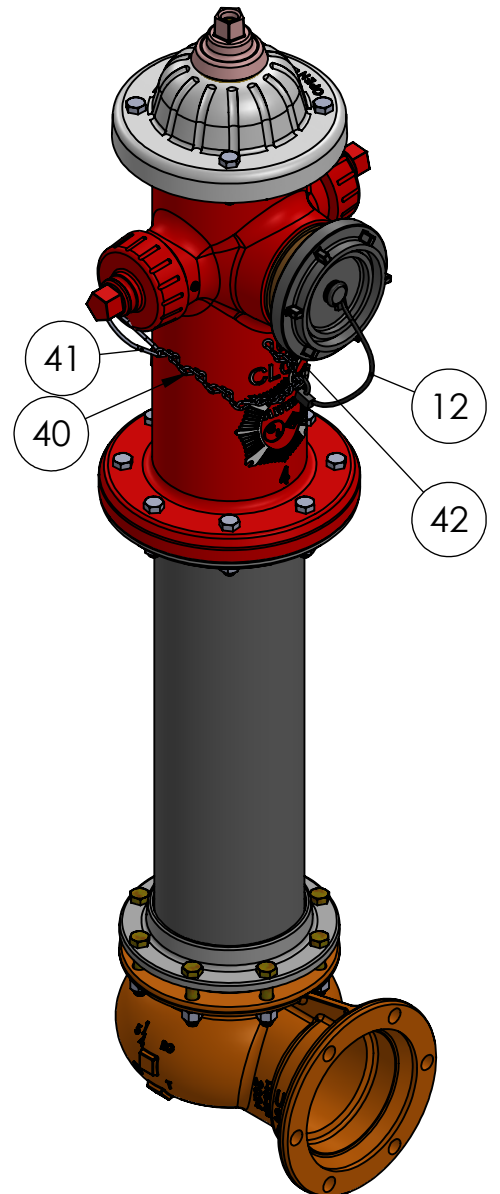
**Adjustable Hydrant Wrench with Spanner
Fits both Pin type and Rocker type hose couplings**

BOM#	Component	Material	Material Spec	QTY.
01	O-RING #131	Rubber	EPDM	1
02	THRUST BEARING	Plastic	DELTRIN	2
03	OPERATING NUT	Copper Alloy	ASTM B584 C86700	1
05	UPPER STEM SLEEVE	Copper Alloy	ASTM B135 Alloy 330	1
06	O-RING #119	RUBBER	EPDM	1
07	UPPER STEM	Steel	304 SS	1
08	PIN	Stainless Steel	AISI 303	2
09	COTTER PIN	Stainless Steel	AISI 302	2
10	SAFETY STEM COUPLING	Stainless Steel	AISI C1026	1
11	SAFETY COUPLING PIN	Stainless Steel	AISI 302	2
12	LOWER STEM	Steel	304 SS	1
14	STORZ NOZZLE CAP CABLE	-	-	1
15	PIN W/HEAD	STEEL	AISI 316	4
16	Drain Valve Facing	RUBBER	TEXIN 950	2
17	UPPER VALVE PLATE	Copper Alloy	ASTM B584 C83600	1
18	O-RING #357 / #361	Rubber	EPDM	1
19	SEAT RING	Copper Alloy	ASTM B584 C83600	1
20	O-RING #354 / #360	RUBBER	EPDM	1
21	Main Valve Seat	Rubber	EPDM	1
22	LOCK WASHER	Stainless Steel	316 SS	1
24	LOWER VALVE PLATE	CAST IRON	ASTM B584 C83600	1
25	CAPSCREW	STAINLESS STEEL	316 SS	1
26	WEATHER CAP	DUCTILE IRON	ASTM A536 65-45-12	1
27	THRUST NUT	Copper Alloy	ASTM B584 C83600	1
28	O-RING #151	RUBBER	EPDM	1
29	CAPSCREW	STAINLESS STEEL	316 SS	4
29	HEX NUT	STAINLESS STEEL	316 SS	12
30	BONNET	DUCTILE IRON	ASTM A536 65-45-12	1
31	O-RING #217	RUBBER	EPDM	2
32	O-RING #444	RUBBER	EPDM	2
33	NOZZLE SECTION	DUCTILE IRON	ASTM A536 65-45-12	1
34	SET SCREW	STEEL	316 SS	3
35	O-RING #250	RUBBER	EPDM	1
36	STORZ NOZZLE	BRONZE / ALUMINUM	ASTM B584 C83600 / 6061-T6	1
38	STORZ NOZZLE CAP	Aluminum	AISI 6061-T6	1
40	O-RING #235	RUBBER	EPDM	2
41	HOSE NOZZLE	Bronze	ASTM B584 C83600	2
42	Hose Cap Gasket	Rubber	EPDM	2
43	HOSE NOZZLE CAP	Cast Iron	ASTM A126 Class B	2
44	DOUBLE LOOP CHAIN 0.135 DIA. WIRE	ZINC PLATE STEEL	-	13
44	DRY BARREL CHAIN	ZINC PLATE Steel	-	1
45	S-HOOK	ZINC PLATE STEEL	-	1
46	HEX HEAD BOLT	STAINLESS STEEL	316 SS	8
47	O-RING #439 / #442	RUBBER	EPDM	2
48	MEDALLION BARREL UPPER FLANGE	Ductile Iron	ASTM A536 65-45-12	1
49	SAFETY FLANGE	CAST IRON	ASTM A126 Class B	2
50	BARREL	Ductile Iron	ANSI A21.51 CI 53	1
51	CAPSCREW	STAINLESS STEEL	316 SS	8
51	LOCK NUT	STAINLESS STEEL	316 SS	8
52	BARREL LOWER FLANGE	Ductile Iron	ASTM A536 65-45-12	1
54	DRAIN RING	Copper Alloy	ASTM B584 C83600	1
57	SHOE	DUCTILE IRON	ASTM A536 65-45-12	1

MEDALLION HYDRANT
BILL OF MATERIAL

CLOW VALVE COMPANY

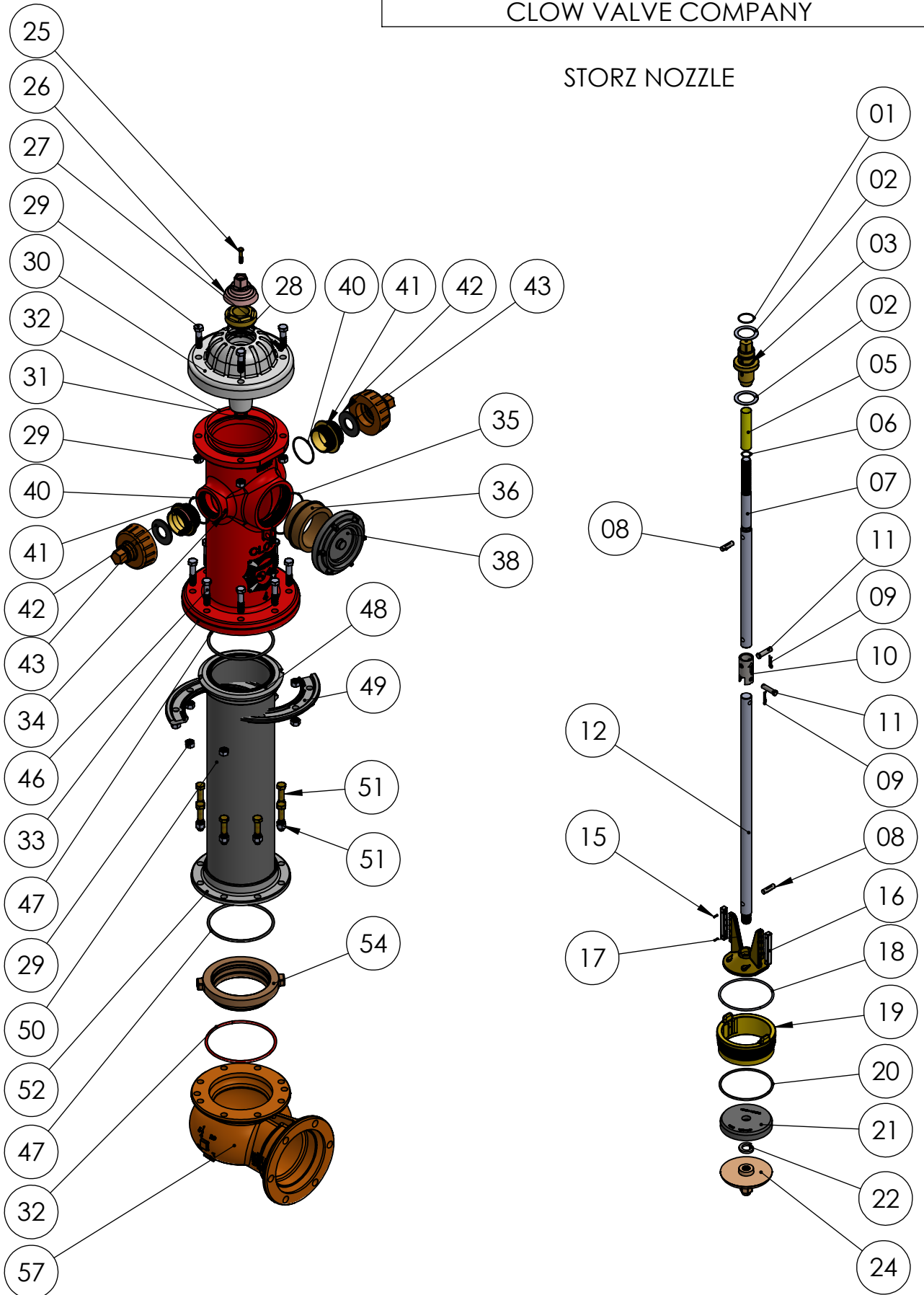
STORZ NOZZLE



MEDALLION HYDRANT
BILL OF MATERIAL

CLOW VALVE COMPANY

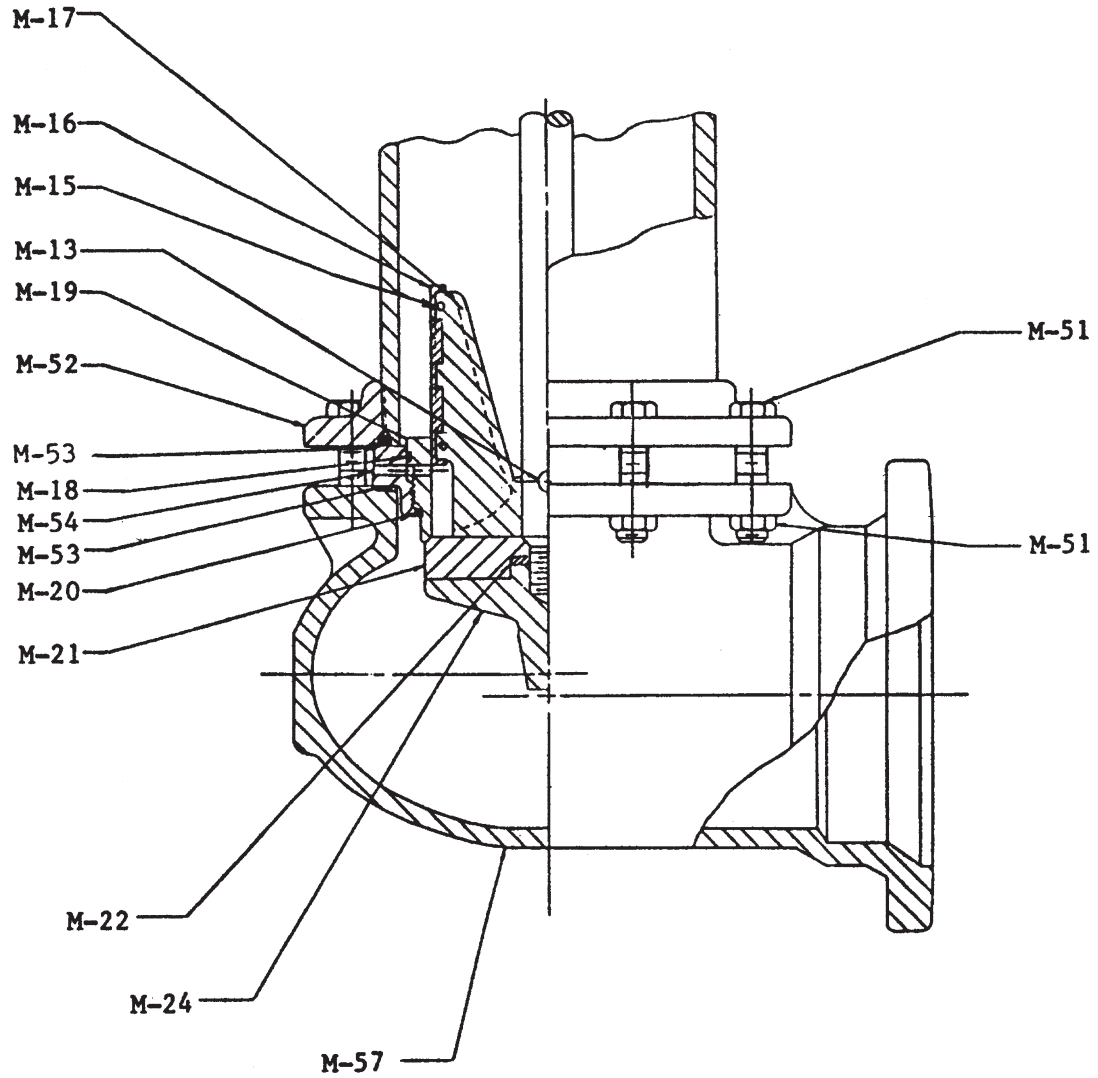
STORZ NOZZLE



MEDALLION HYDRANT
ASSEMBLY

CLOW VALVE COMPANY

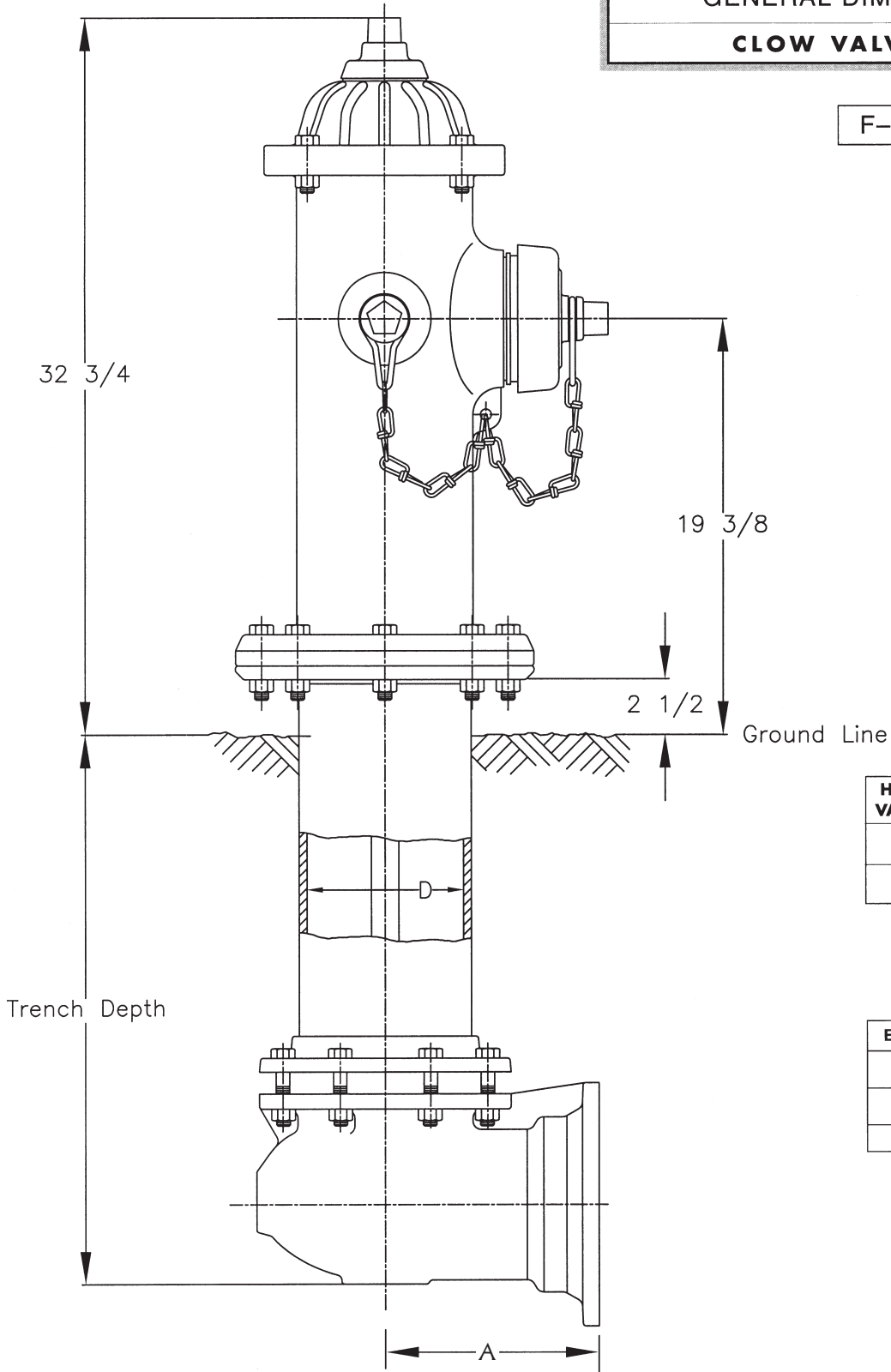
F-2545



MEDALLION HYDRANT
GENERAL DIMENSION LAYOUT

CLOW VALVE COMPANY

F-2545



HYDRANT VALVE SIZE	D
4 1/2"	6.16 ± .14
5 1/4"	7.04 ± .14

END TYPE	A
Flange	8 1/8"
SMJ	9"
Tyton	9 5/8"

385-09
B 6/5/07

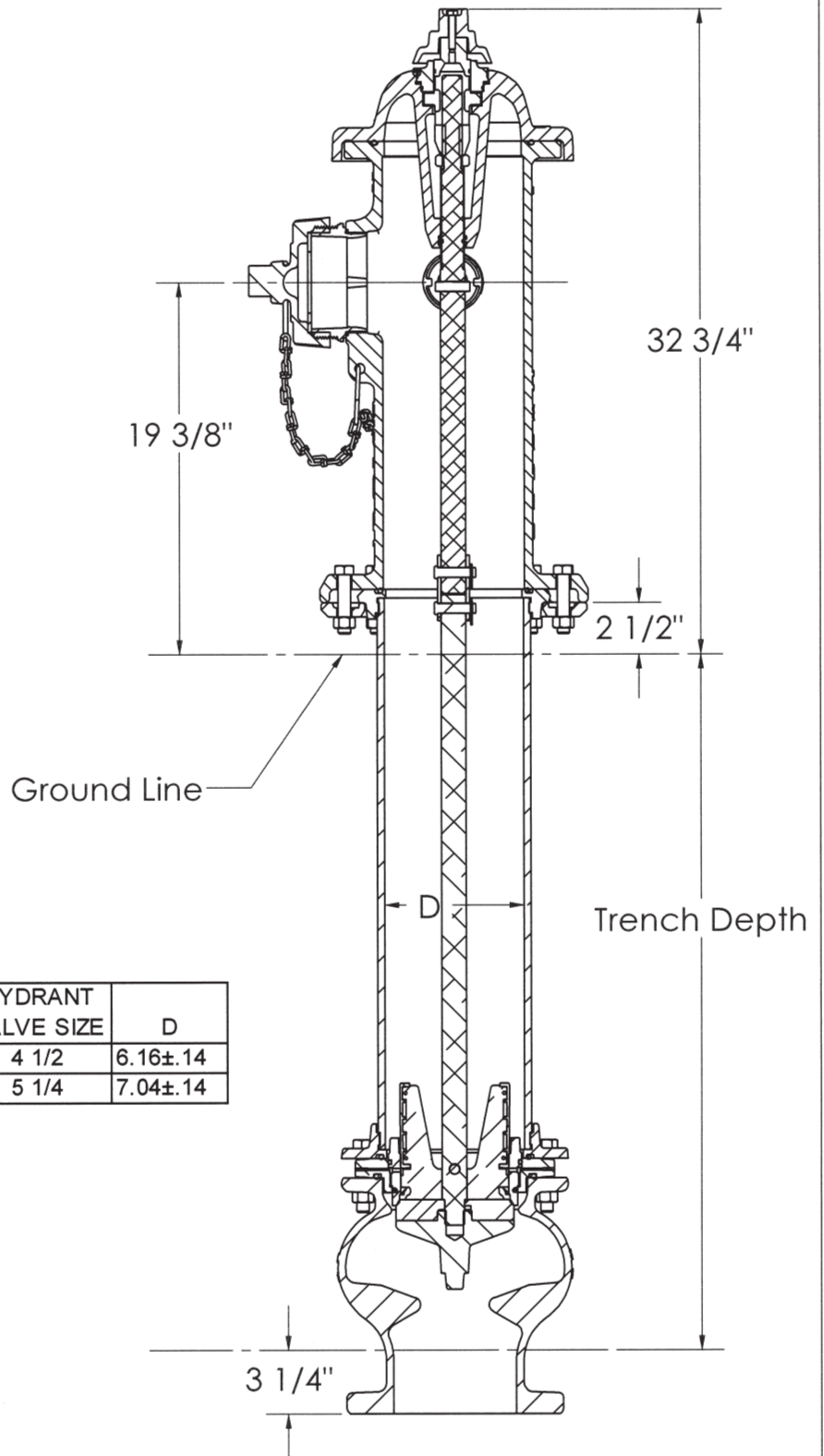
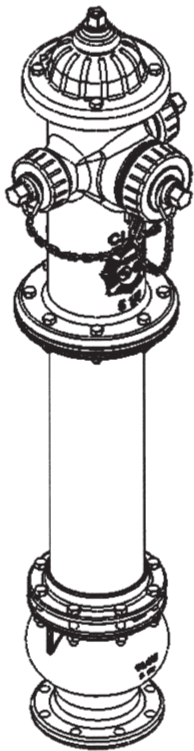
MEDALLION HYDRANT Vertical Bottom General Dimension Layout

CLOW VALVE COMPANY

Hydrant complies with AWWA C502 & C550 standards.

Hydrant complies with UL 246 and FM standard.

Hydrant has a rated working pressure of 250 psig.

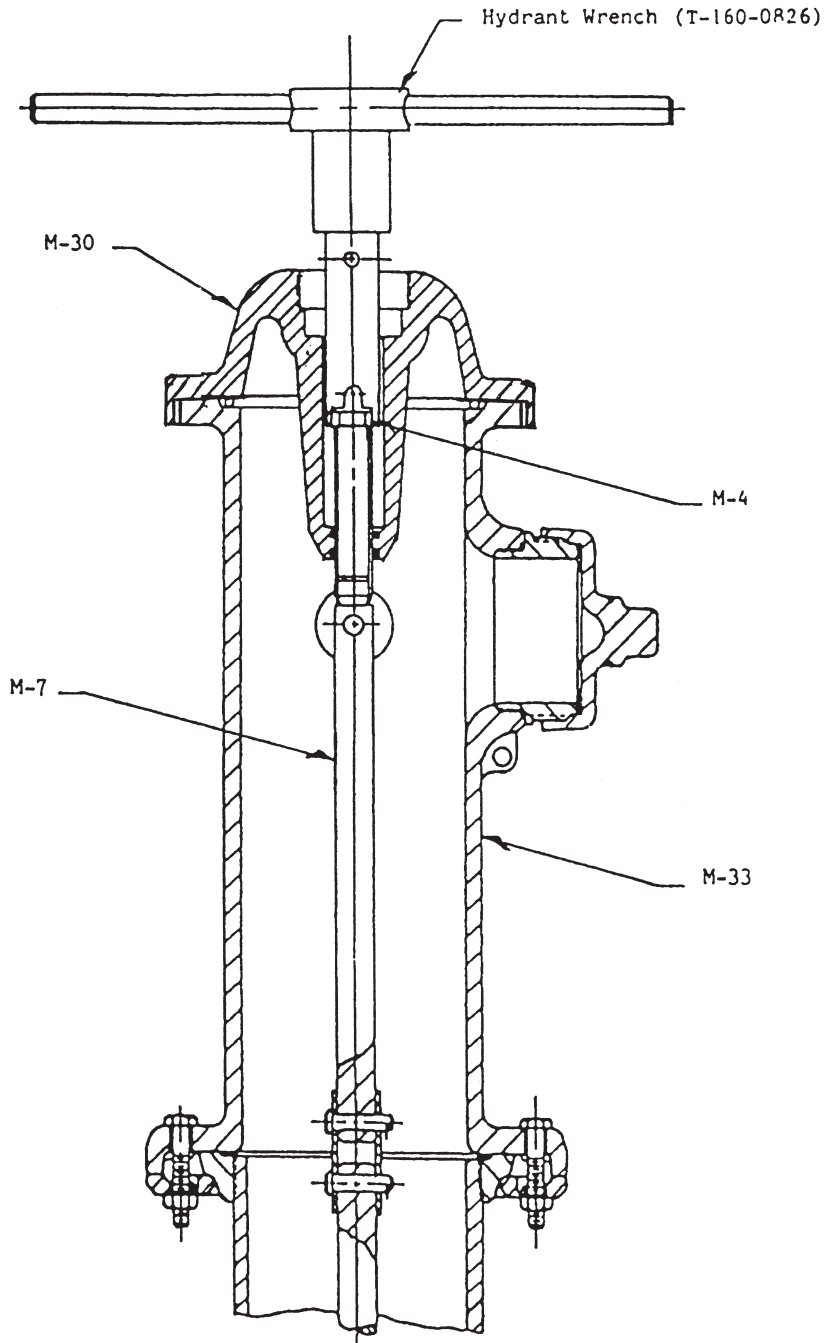


HYDRANT VALVE SIZE	D
4 1/2	6.16±.14
5 1/4	7.04±.14

MEDALLION HYDRANT
MAIN VALVE SEAT REMOVAL
HYDRANT WRENCH-BONNET STOP OPTION

CLOW VALVE COMPANY

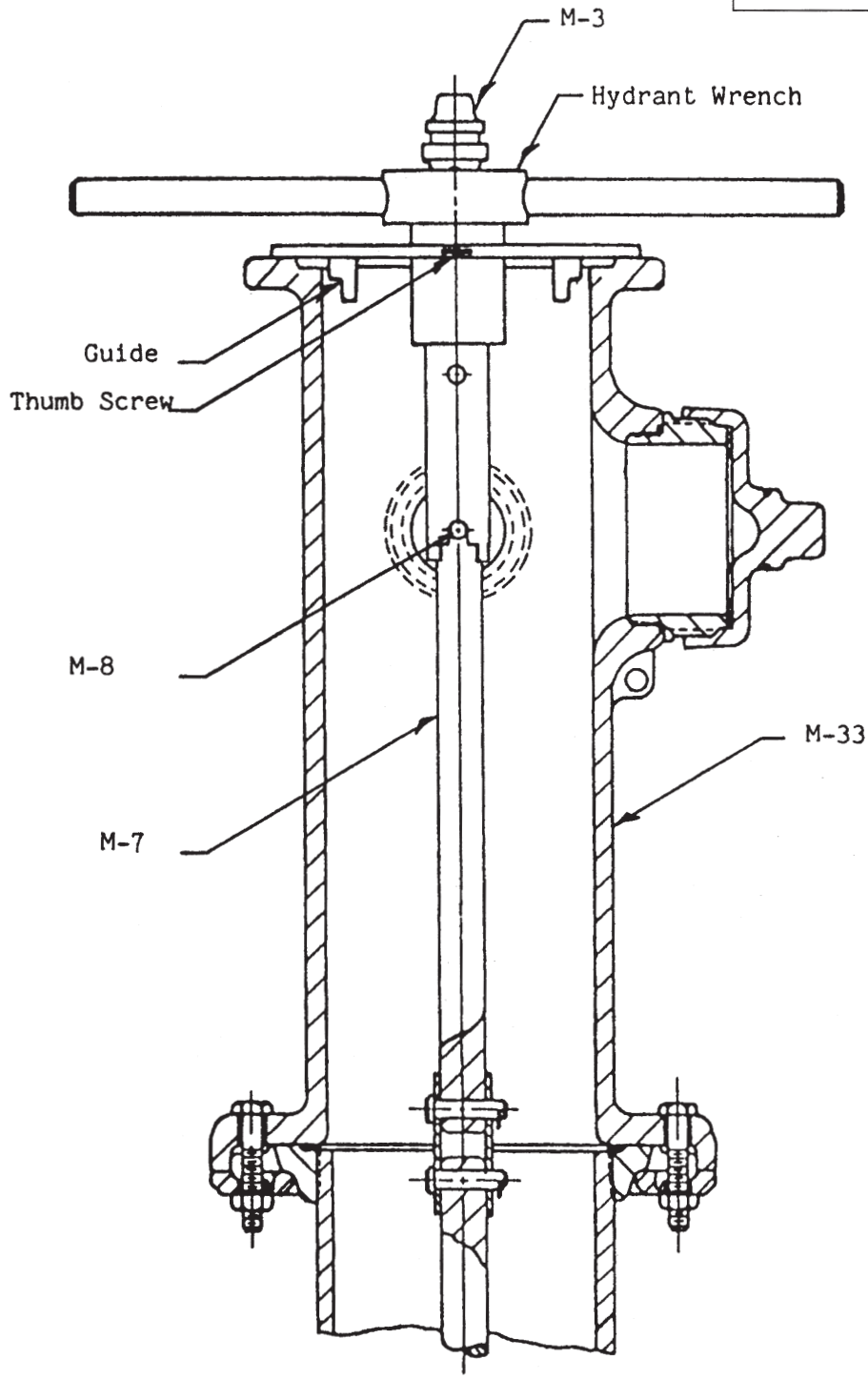
F-2545



MEDALLION HYDRANT
MAIN VALVE SEAT REMOVAL
HYDRANT WRENCH

CLOW VALVE COMPANY

F-2545



MEDALLION HYDRANT
AWWA UL/FM
SAMPLE SPECIFICATIONS

CLOW VALVE COMPANY

1. Fire Hydrant shall be manufactured in accordance with AWWA Standard C502, be listed by Underwriters Laboratories, Inc. and have Factory Mutual Research approval.
2. Fire Hydrant shall be designed for 250 psi working pressure and tested to 500 psi Hydrostatic pressure.
3. Fire Hydrant shall be backed by manufacturers 10-year limited warranty.
4. Fire Hydrant shall be dry-top center stem construction having an O-Ring sealed lubrication reservoir.
5. Fire Hydrant shall be manufactured with operating nut and thrust nut made of copper alloy with bearings located both above and below the thrust collar and with operating nut protected by a cast-iron weather shield.
6. Fire Hydrant shall be manufactured with nozzles mechanically locked into the barrel coupling. Nozzle section must rotate 360 degrees.
7. Fire Hydrant shall be a "Traffic Model", complete with safety flanges and steel stem coupling. Nozzle section must rotate 360 degrees.
8. Fire Hydrant shall be manufactured with a main valve seat ring of copper alloy threaded into a copper alloy drain ring. A 360 degree drain channel shall have a minimum of two drain outlets.
9. Fire Hydrant shall have a copper alloy upper valve plate and two urethane rubber facings that activate the drain ports.
10. Fire Hydrant shall be manufactured with a lower valve plate that bottoms out in the shoe for maximum opening.
11. Fire Hydrant shall be manufactured with a minimum main valve opening of 4½ or 5¼ inches.
12. Fire Hydrant shall be the CLOW MEDALLION as manufactured by the Clow Valve Company or approved equal.