

**FIRE HYDRANTS
ORDERING INFORMATION
CLOW VALVE COMPANY**

When placing orders or making inquiries, please furnish the following information. This information will enable us to answer your questions, prepare quotations, and fill your order promptly. Lack of essential information is almost sure to cause delays.

Use Figure Number wherever possible to identify the product wanted

1. **Quality and style.**
2. **Construction:** Safety Flange.
3. **Size of main valve openings:** 4¹/₂ or 5¹/₄ inch.
4. **Number and size of pumper nozzles.**
5. **Type of inlet connection:** Flanged, mechanical joint, or Tyton (6")
6. **Size of inlet connection:** 4-, 6-, or 8"
7. **Depth of trench or bury:** Distance from ground line to bottom of connecting pipe.
8. **Direction of opening:** Usually open to left (counterclockwise); open right (clockwise), when specified.
9. **Size and shape of operating nut:** National Standard is 1¹/₂-inch pentagon measured from point to opposite flat at base of nut.
10. **Hose and pumper nozzle threads:** If other than National Standard, thread specification and nut size must be furnished in the following manner:
 - (a) Send sample nozzle or male hose coupling; or
 - (b) Send drawing giving complete thread specification; or
 - (c) Refer us to previous hydrant order. Complete records are kept of all installations.
11. **Color:** Specify color of paint wanted.

Specifications

Clow, Eddy, and Medallion Fire Hydrants meet or exceed the requirements of American Water Works Association Specification AWWA C502, Fire Hydrants for Ordinary Water Service.

Hose and Hydrant Wrenches

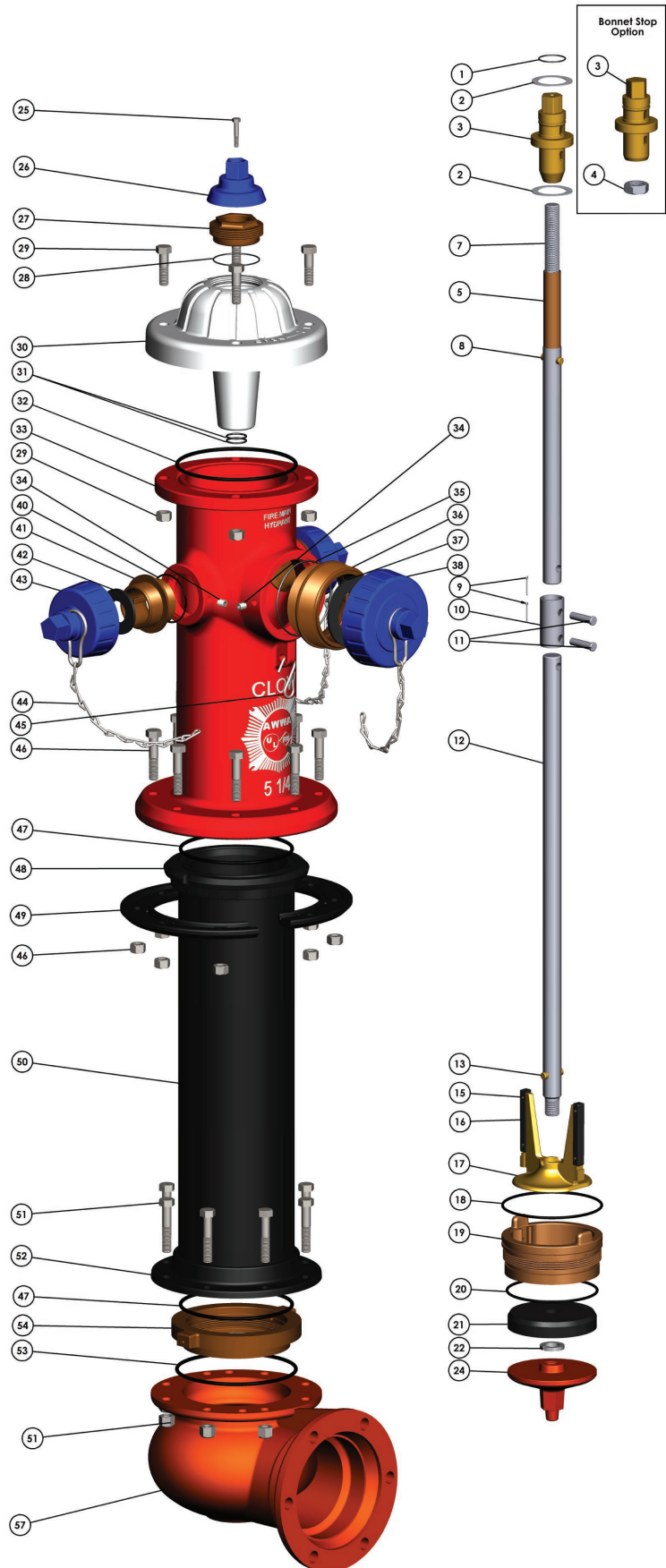


F-2750

**Adjustable Hydrant Wrench with Spanner
Fits both Pin type and Rocker type hose couplings**

MEDALLION HYDRANT PARTS ASSEMBLY

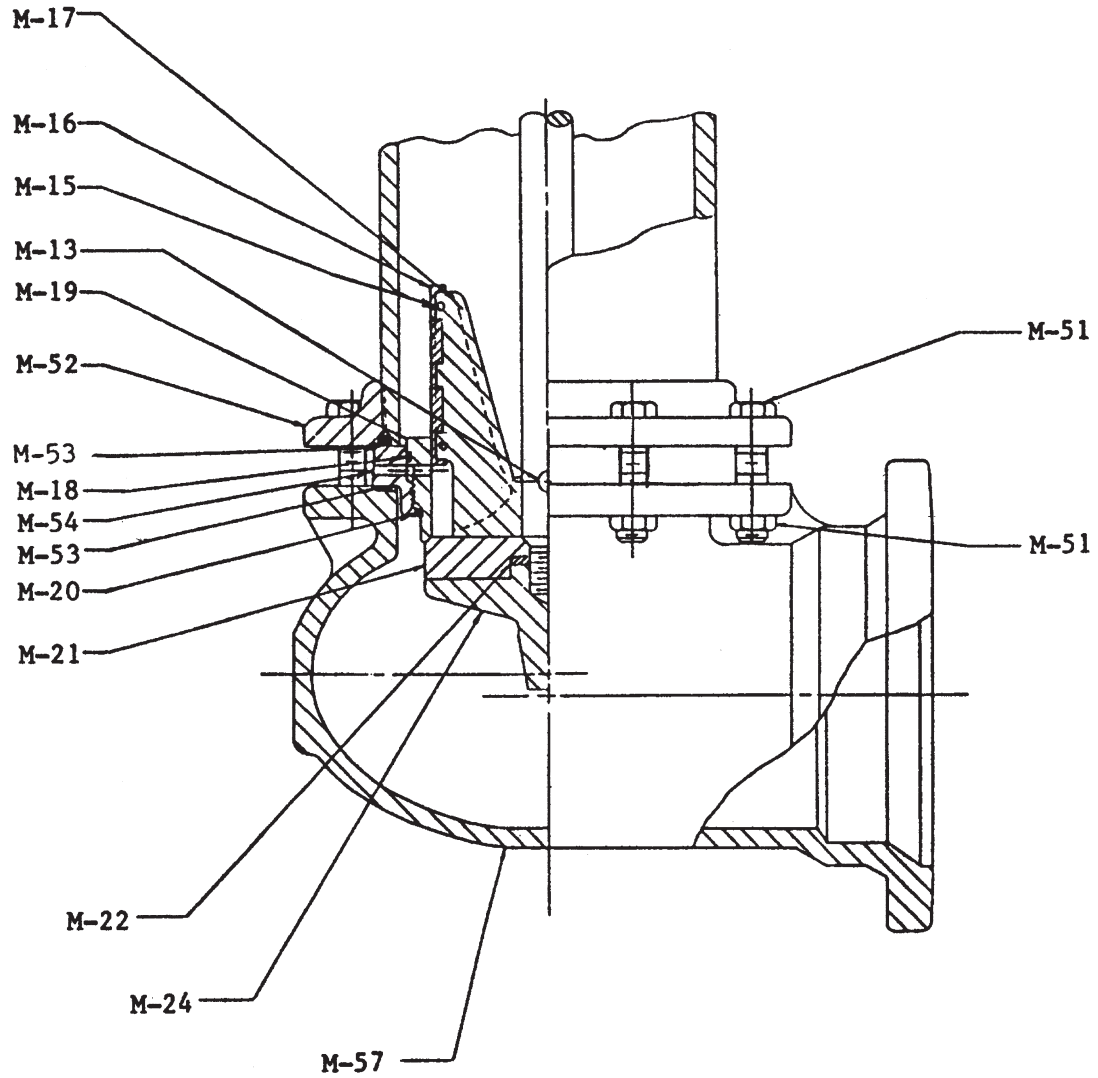
ITEM NO.	DESCRIPTION	MATERIAL	QTY.
1	Operating Nut O-Ring	Rubber	1
2	Thrust Bearing	Plastic	2
3	Operating Nut	Copper Alloy	1
4	Bonnet Stop	Zinc Plated Steel	1
5	Upper Stem Sleeve	Copper Alloy	1
7	Upper Stem	Steel	1
8	Pin	Stainless Steel	1
9	Cotter Pin	Stainless Steel	2
10	Safety Stem Coupling	Stainless Steel	1
11	Safety Coupling Pin	Stainless Steel	2
12	Lower Stem	Steel	1
13	Pin	Stainless Steel	1
15	Pin	Stainless Steel	4
16	Drain Valve Facing	Thermoplastic	2
17	Upper Valve Plate	Copper Alloy	1
18	Seat Ring Upper O-Ring	Rubber	1
19	Seat Ring	Copper Alloy	1
20	Seat Ring Lower O-Ring	Rubber	1
21	Main Valve Seat	Rubber	1
22	Lock Washer	Stainless Steel	1
24	Lower Valve Plate	Cast Iron	1
25	Hex Head Bolt	Stainless Steel	1
26	Weather Cap	Cast Iron	1
27	Thrust Nut	Copper Alloy	1
28	Thrust Nut O-Ring	Rubber	1
29	Hex Head Bolt & Nut	Stainless Steel	4
30	Bonnet	Cast Iron	1
31	Stem O-Ring	Rubber	2
32	Bonnet O-Ring	Rubber	1
33	Nozzle Section	Cast Iron	1
34	Set Screw	Stainless Steel	3
35	Pumper O-Ring	Rubber	1
36	Pumper Nozzle	Copper Alloy	1
37	Pumper Nozzle Gasket	Rubber	1
38	Pumper Cap	Cast Iron	1
40	Hose O-Ring	Rubber	2
41	Hose Nozzle	Copper Alloy	2
42	Hose Nozzle Gasket	Rubber	2
43	Hose Nozzle Cap	Cast Iron	2
44	Nozzle Cap Chain	Zinc Plated Steel	3
45	Chain "S" Hook	Zinc Plated Steel	1
46	Hex Head Bolt & Nut	Stainless Steel	8
47	Barrel O-Ring	Rubber	2
48	Barrel Upper Flange	Ductile Iron	1
49	Safety Flange	Cast Iron	2
50	Barrel	Ductile Iron	1
51	Hex Head Bolt & Lock Nut	Stainless Steel	8
52	Barrel Lower Flange	Ductile Iron	1
53	Drain Ring O-Ring	Rubber	1
54	Drain Ring	Copper Alloy	1
57	Shoe	Ductile Iron	1



MEDALLION HYDRANT
ASSEMBLY

CLOW VALVE COMPANY

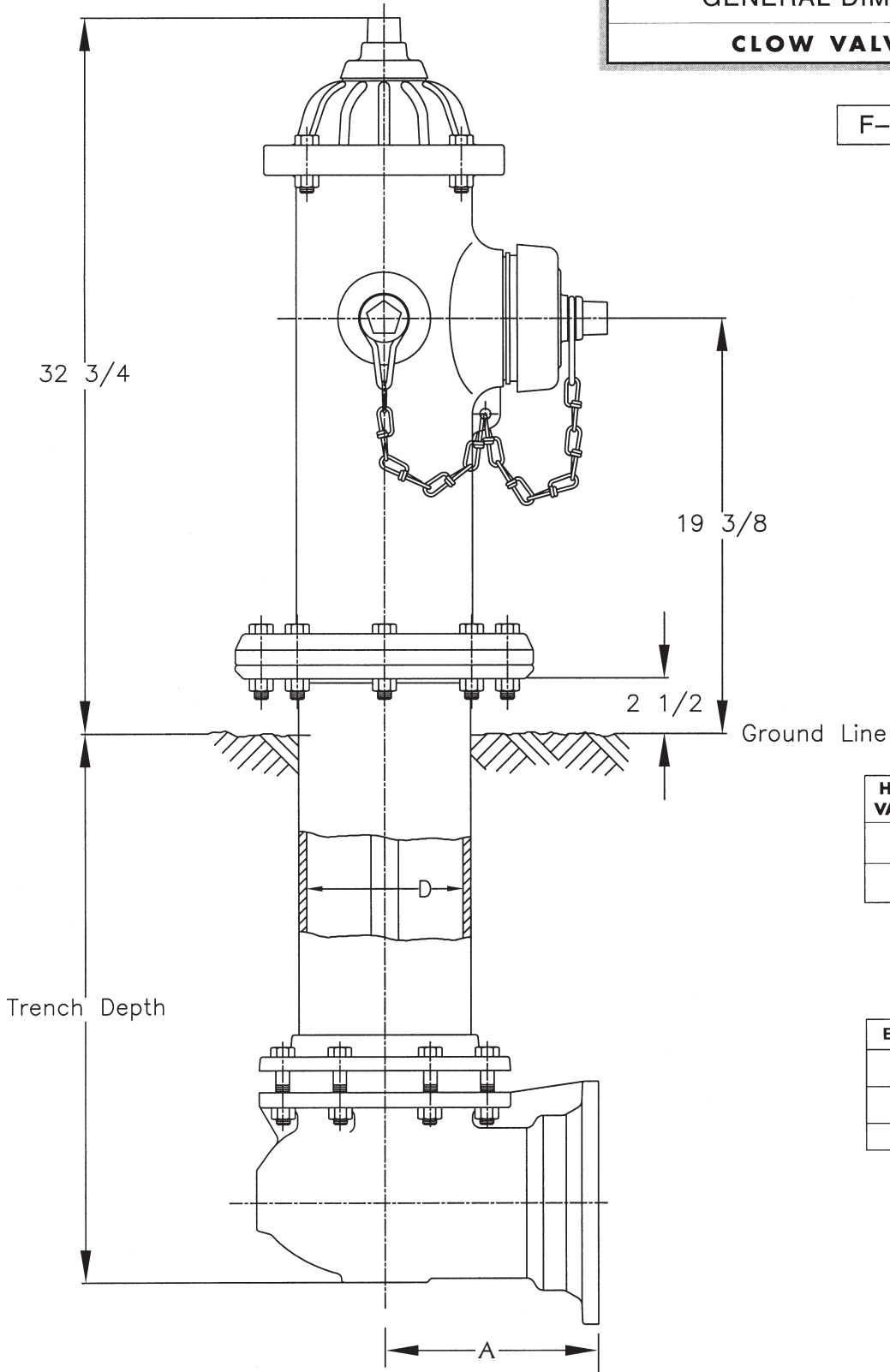
F-2545



MEDALLION HYDRANT
GENERAL DIMENSION LAYOUT

CLOW VALVE COMPANY

F-2545



HYDRANT VALVE SIZE	D
4 1/2"	6.16 ± .14
5 1/4"	7.04 ± .14

END TYPE	A
Flange	8 1/8"
SMJ	9"
Tyton	9 5/8"

385-09
B 6/5/07

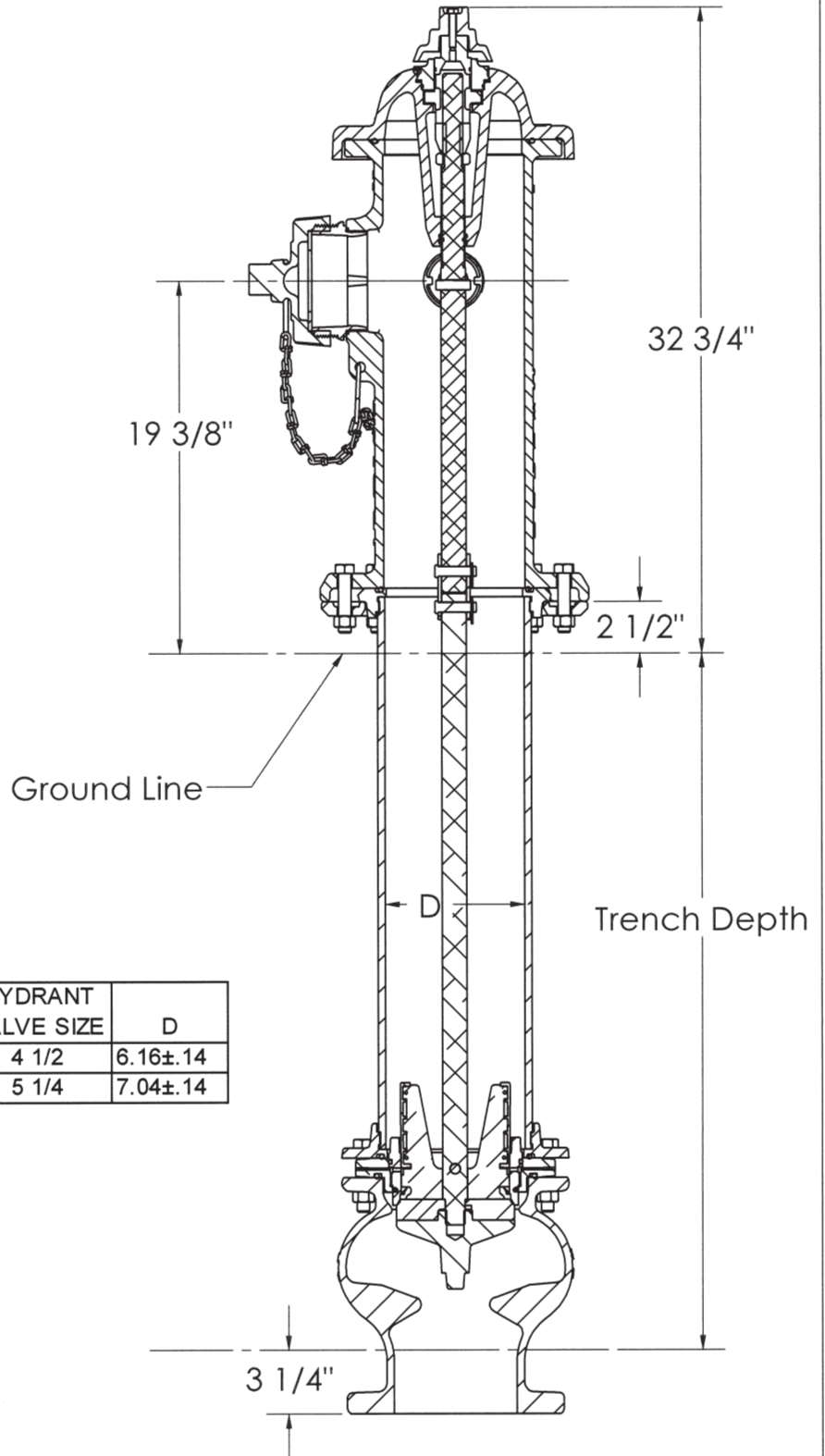
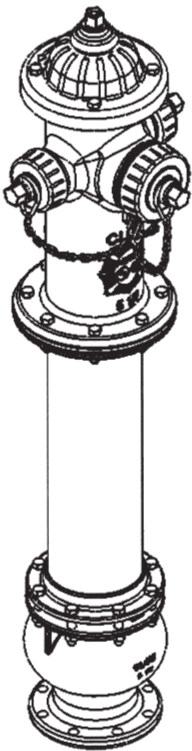
MEDALLION HYDRANT Vertical Bottom General Dimension Layout

CLOW VALVE COMPANY

Hydrant complies with AWWA C502 & C550 standards.

Hydrant complies with UL 246 and FM standard.

Hydrant has a rated working pressure of 250 psig.

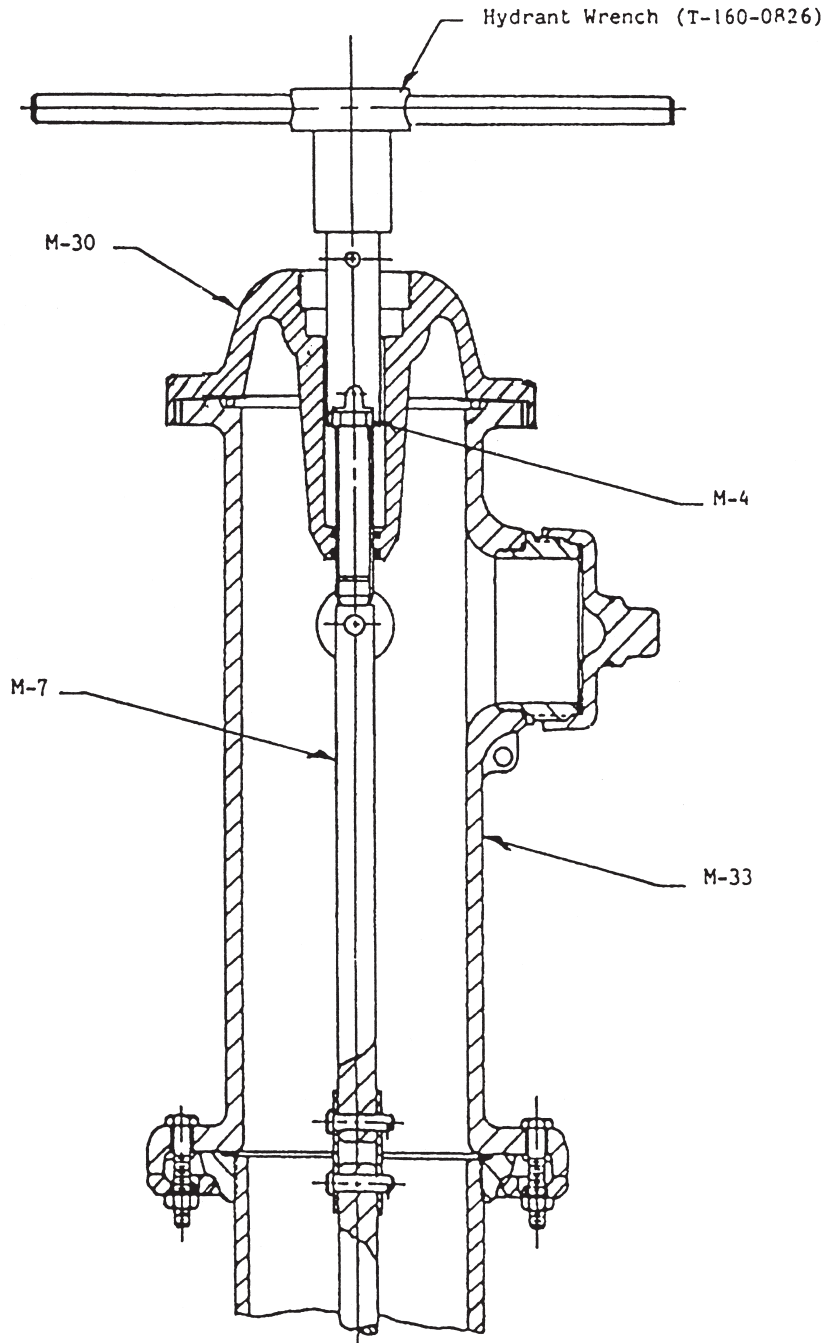


HYDRANT VALVE SIZE	D
4 1/2	6.16±.14
5 1/4	7.04±.14

MEDALLION HYDRANT
MAIN VALVE SEAT REMOVAL
HYDRANT WRENCH-BONNET STOP OPTION

CLOW VALVE COMPANY

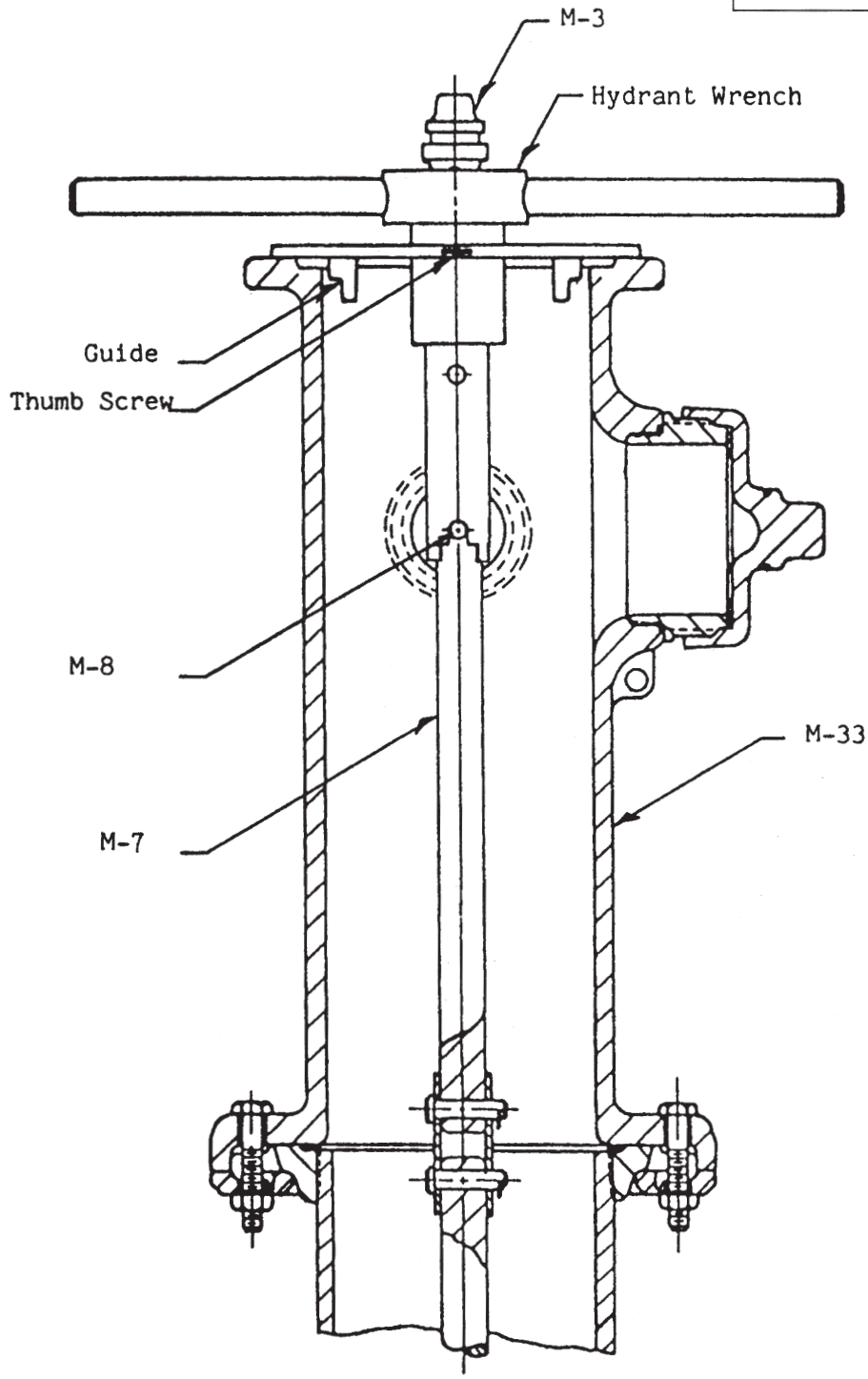
F-2545



MEDALLION HYDRANT
MAIN VALVE SEAT REMOVAL
HYDRANT WRENCH

CLOW VALVE COMPANY

F-2545



MEDALLION HYDRANT
AWWA UL/FM
SAMPLE SPECIFICATIONS

CLOW VALVE COMPANY

1. Fire Hydrant shall be manufactured in accordance with AWWA Standard C502, be listed by Underwriters Laboratories, Inc. and have Factory Mutual Research approval.
2. Fire Hydrant shall be designed for 250 psi working pressure and tested to 500 psi Hydrostatic pressure.
3. Fire Hydrant shall be backed by manufacturers 10-year limited warranty.
4. Fire Hydrant shall be dry-top center stem construction having an O-Ring sealed lubrication reservoir.
5. Fire Hydrant shall be manufactured with operating nut and thrust nut made of copper alloy with bearings located both above and below the thrust collar and with operating nut protected by a cast-iron weather shield.
6. Fire Hydrant shall be manufactured with nozzles mechanically locked into the barrel coupling. Nozzle section must rotate 360 degrees.
7. Fire Hydrant shall be a "Traffic Model", complete with safety flanges and steel stem coupling. Nozzle section must rotate 360 degrees.
8. Fire Hydrant shall be manufactured with a main valve seat ring of copper alloy threaded into a copper alloy drain ring. A 360 degree drain channel shall have a minimum of two drain outlets.
9. Fire Hydrant shall have a copper alloy upper valve plate and two urethane rubber facings that activate the drain ports.
10. Fire Hydrant shall be manufactured with a lower valve plate that bottoms out in the shoe for maximum opening.
11. Fire Hydrant shall be manufactured with a minimum main valve opening of 4½ or 5¼ inches.
12. Fire Hydrant shall be the CLOW MEDALLION as manufactured by the Clow Valve Company or approved equal.